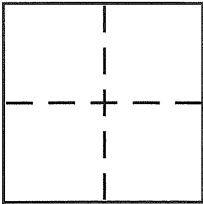


CORNER RECORDDocument Number CR 2068City of OaklandCounty of Alameda, CaliforniaBrief Legal Description Lot 3, Block E Claremont Woodlands (4 M 49)**CORNER TYPE**

Government Corner ☐ Control ☐
 Meander ☐ Property ☒
 Rancho ☐ Other ☐
 Date of Survey 11-13-2003

COORDINATES (Optional)

N. _____
 E. _____
 Zone _____ NAD27 ☐ NAD83 ☐
 NAD83 Epoch _____
 Elev. _____
 Vert. Datum: NGVD29 ☐ NAVD88 ☐
 Meas. Units: Metric ☐ Imperial ☐

Corner - Left as found ☐ Found and tagged ☐ Established ☒ Reestablished ☐ Rebuilt ☐

Identification and type of corner found: Evidence used to identify or procedure used to establish or reestablish the corner:

Found concrete monument per (4 M 49)

A description of the physical condition of the monument as found and as set or reset:

Set P.K. nail & Aluminum Tag LS 4961

Set 5/8" Rebar & Cap LS 4961

SURVEYOR'S STATEMENT

This Corner Record was prepared by me or under my direction in conformance with the Land Surveyor's Act on 12-01-2003

Signed Robert J. Brunel P.L.S or R.C.E. No. 4961

COUNTY SURVEYOR'S STATEMENT

This Corner Record was received 12.03.03

and examined and filed 1.26-04

Signed Russell R. Penland, Jr. P.L.S or R.C.E. No. 5726

Title COUNTY SURVEYOR

County Surveyor's Comment _____

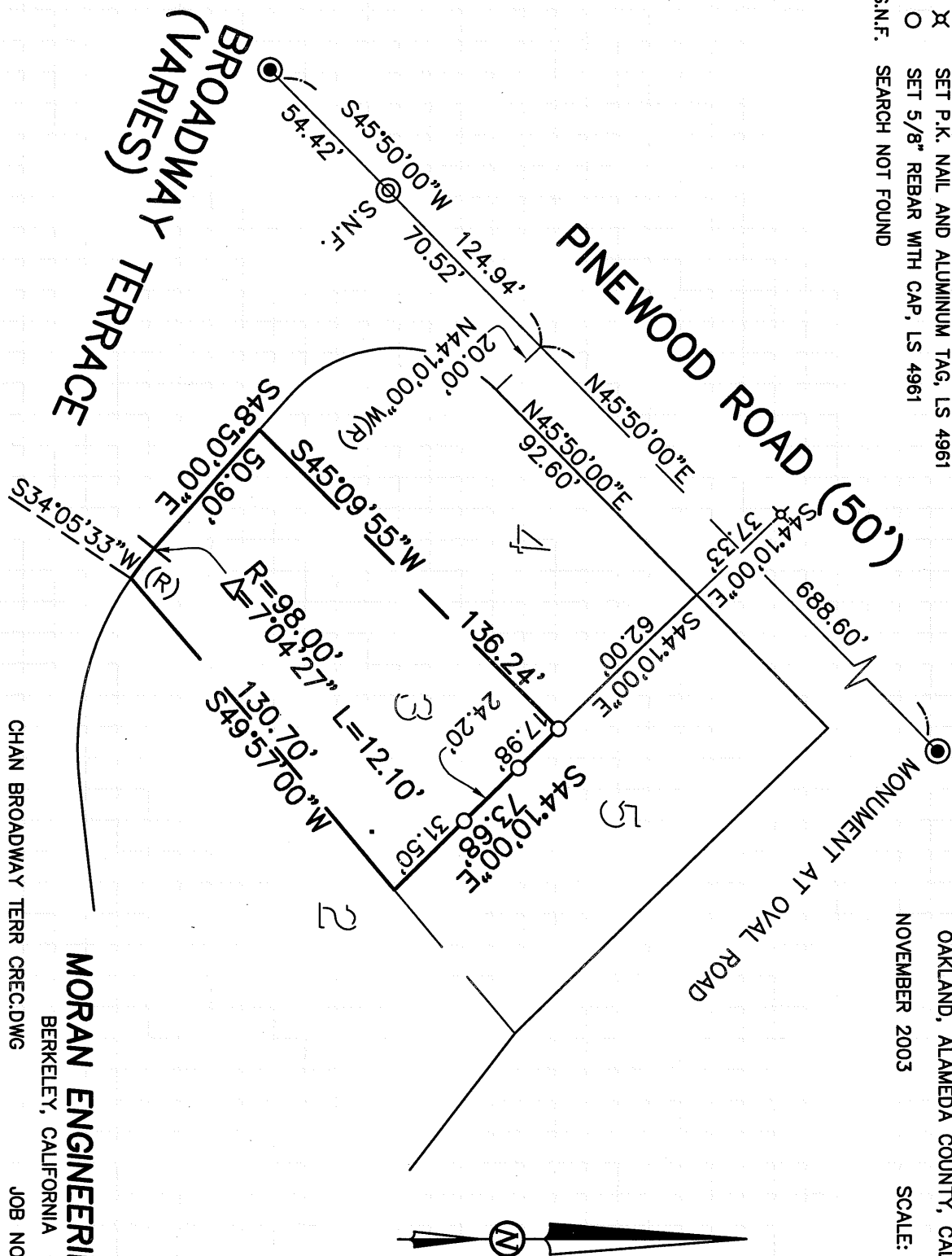


LEGEND

- FOUND CONCRETE MONUMENT PER (4 M 49)
- ⋈ SET P.K. NAIL AND ALUMINUM TAG, LS 4961
- SET 5/8" REBAR WITH CAP, LS 4961
- S.N.F. SEARCH NOT FOUND

CORNER RECORD

LOT 3, BLOCK "E"
CLAREMONT WOODLANDS (4 M 49)
OAKLAND, ALAMEDA COUNTY, CALIFORNIA
NOVEMBER 2003
SCALE: 1" = 50'



CHAN BROADWAY TERR CREG.DWG

JOB NO. 03-5845

MORAN ENGINEERING
BERKELEY, CALIFORNIA