

--- BOUNDARY LINE  
 --- MONUMENT LINE  
 --- EASEMENT LINE  
 --- ORIGINAL LOT LINE PER TRACT 5432  
 M - M MONUMENT-TO-MONUMENT DISTANCE  
 (R) RADIAL BEARING  
 (O) FOUND STANDARD CITY STREET MONUMENT  
 (●) FOUND 3/4" IRON PIPE -- TAGGED RCE 22485

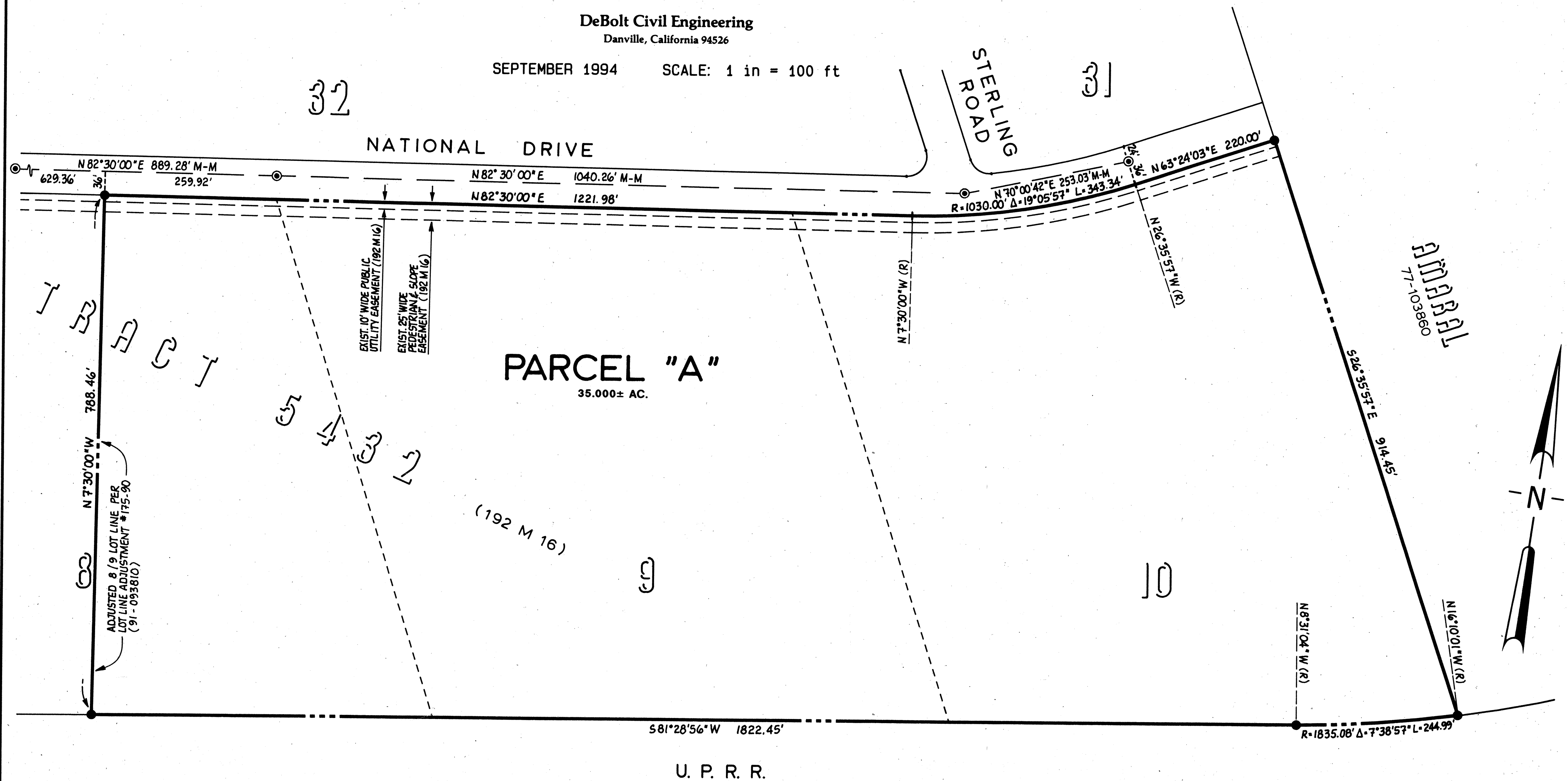
BEING LOTS 9 & 10 AND A PORTION OF LOT 8 OF  
TRACT 5432 (192 M 16), ALAMEDA COUNTY RECORDS

CITY OF LIVERMORE  
ALAMEDA COUNTY, CALIFORNIA

**DeBolt Civil Engineering**  
Danville, California 94526

SEPTEMBER 1994      SCALE: 1 in = 100 ft

THE BEARING LINE NORTH 82°30'00" EAST ALONG THE MONUMENT LINE OF NATIONAL DRIVE AS SHOWN ON TRACT 5432 MAP, FILED JULY 10, 1990 IN MAP BOOK 192 AT PAGE 16, ALAMEDA COUNTY RECORDS, WAS TAKEN AS THE BASIS OF BEARINGS FOR THIS MAP. CALIFORNIA COORDINATE SYSTEM, ZONE III.



P.M. 6779

May 22/

6516