

CORNER RECORD

City of BERKELEY

Brief Legal Description CITY MONUMENT B3334

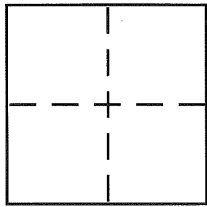
Document Number

CR 2872

County of

ALAMEDA

California



CORNER TYPE

Government Corner ☐ Control ☐
Meander ☐ Property ☐
Rancho ☐ Other ☒
Date of Survey 9-23-06

COORDINATES (Optional)

N. _____
E. _____
Zone _____ NAD27 ☐ NAD83 ☐
NAD83 Epoch _____
Elev. _____
Vert. Datum: NGVD29 ☐ NAVD88 ☐
Meas. Units: Metric ☐ Imperial ☐

Corner -

Left as found ☒

Found and tagged ☐

Established ☐

Reestablished ☐

Rebuilt ☐

Identification and type of corner found: Evidence used to identify or procedure used to establish or reestablish the corner:

SEE SKETCH ON PAGE 2

A description of the physical condition of the monument as found and as set or reset:

SEE SKETCH ON PAGE 2

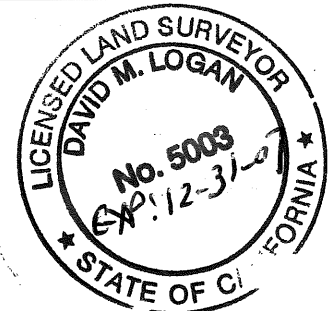
SURVEYOR'S STATEMENT

This Corner Record was prepared by me or under my direction in conformance with the Land Surveyor's Act on SEPTEMBER 20, 2006

Signed

[Signature]

P.L.S. or R.C.E. No. PLS 5003



COUNTY SURVEYOR'S STATEMENT

This Corner Record was received

11-08-06

and examined and filed

12-11-06

Signed

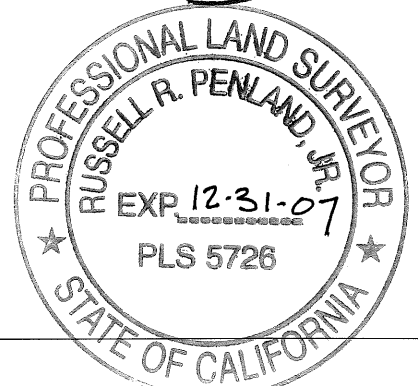
[Signature]

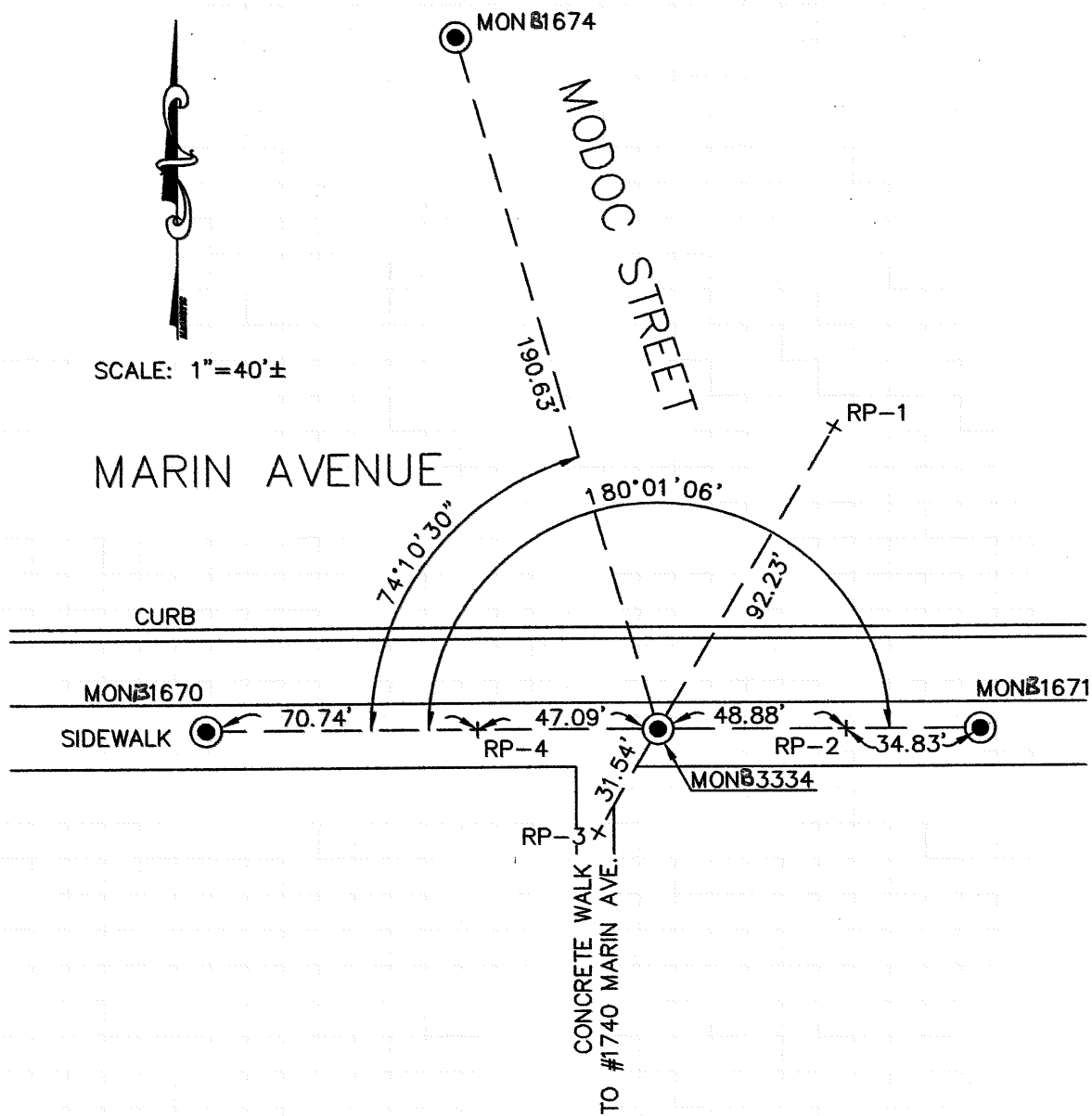
P.L.S. or R.C.E. No. 5726

Title

COUNTY SURVEYOR

County Surveyor's Comment





THE EXISTING MONUMENT AS SHOWN IS REFERENCED
BY THE INTERSECTION OF STRAIGHT LINES BETWEEN
RP-1 TO RP-3 AND RP-2 TO RP-4.

LEGEND:

- EXISTING CITY MONUMENT
- + REFERENCE CUT CROSS IN SIDEWALK