

Bk 34 Pg 3

CORNER RECORD

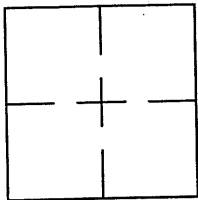
APN No. 063 - 3140 - 015 - 00 (Optional)

Document Number CR 3755

City of BERKELEY

County of ALAMEDA, California

Brief Legal Description MONUMENT REFERENCE ON WILDCAT CANYON ROAD NEAR
CITY OF BERKELEY PATH #80



CORNER TYPE

Government Corner ☐ Control ☒
Meander ☐ Property ☐
Rancho ☐ Other ☐
Date of Survey MAY 27, 2009

COORDINATES (Optional)

N. _____
E. _____
Zone _____ Datum _____
Elev. _____

Corner - Left as found ☒ Found and tagged ☐ Established ☐ Reestablished ☐ Rebuilt ☐

In compliance with Section 8771 of the Professional Land Surveyors' Act, this corner record is being filed to
ESTABLISH X / REESTABLISH _____ the position of an existing monument PRIOR X / SUBSEQUENT _____
to street or highway reconstruction. (Use this portion only when applicable.)

Identification and type of corner found: Evidence used to identify or procedure used to establish or reestablish the corner:
REFERENCED EXISTING CITY OF BERKELEY MONUMENT B2106 AT RISK OF BEING
DISTURBED DURING AN UPCOMING SANITARY SEWER REHABILITATION PROJECT.

A description of the physical condition of the monument as found and as set or reset: CITY OF BERKELEY
STANDARD MONUMENT PLAN 2703 (DATED 1954) TYPE. FOUND IN GOOD CONDITION.

SURVEYOR'S STATEMENT

This Corner Record was prepared by me or under my direction in conformance with
the Land Surveyors' Act on AUGUST 12, 2009.

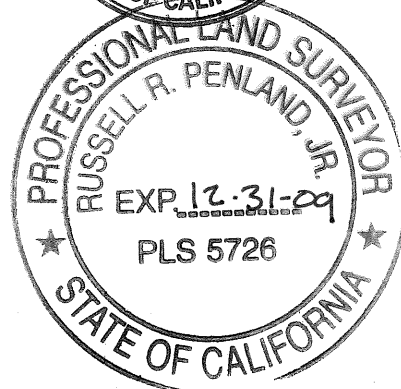
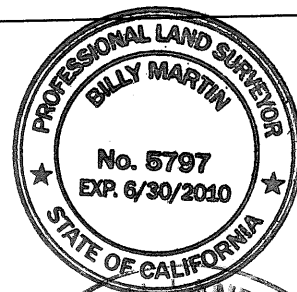
Signed [Signature] L.S. or R.C.E. Number 5797

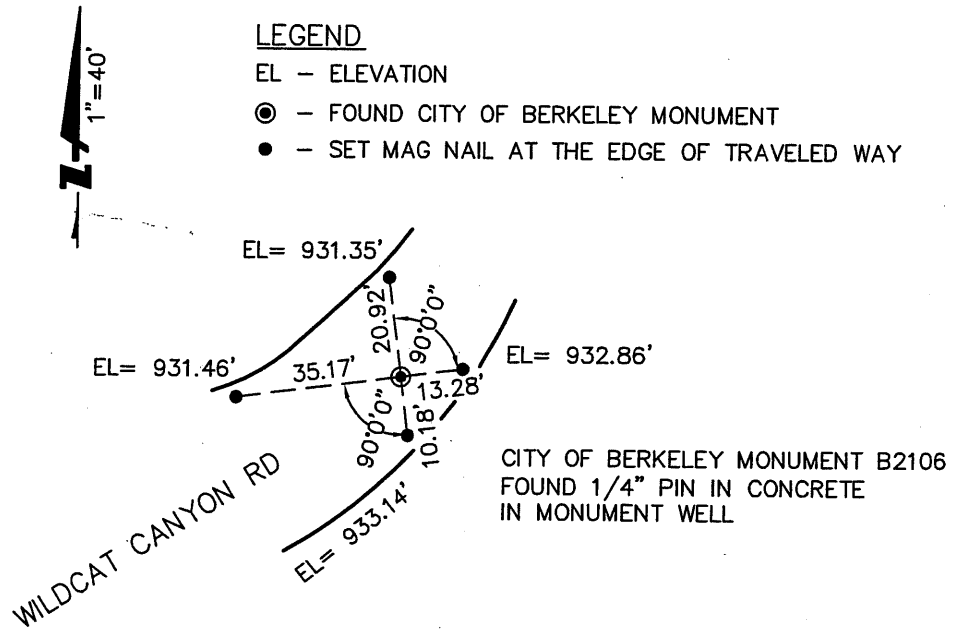
COUNTY SURVEYOR'S STATEMENT

This Corner Record was received 6-19-2009 and examined
and filed 8-18-2009.

Signed [Signature] Title: County Surveyor

County Surveyor's Comment _____





PATH #80