

Bk 43 Pg 50

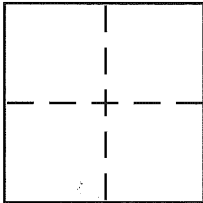
CORNER RECORD

Document Number CR 4789

City of BERKELEY

County of ALAMEDA, California

Brief Legal Description CITY MONUMENT B0630



CORNER TYPE

Government Corner ☐ Control ☒
Meander ☐ Property ☐
Rancho ☐ Other ☐
Date of Survey 12-08-2011

COORDINATES (Optional)

N. _____
E. _____
Zone _____ NAD27 ☐ NAD83 ☐
NAD83 Epoch _____
Elev. _____
Vert. Datum: NGVD29 ☐ NAVD88 ☐
Meas. Units: Metric ☐ Imperial ☐

Corner – Left as found ☒ Found and tagged ☐ Established ☐ Reestablished ☐ Rebuilt ☐

Identification and type of corner found: Evidence used to identify or procedure used to establish or reestablish the corner:

SEE OTHER SIDE

In compliance with Section 8771 of the Professional Land Surveyors' Act, this corner record is being filed to ESTABLISH the position of an existing monument PRIOR to street or highway construction.

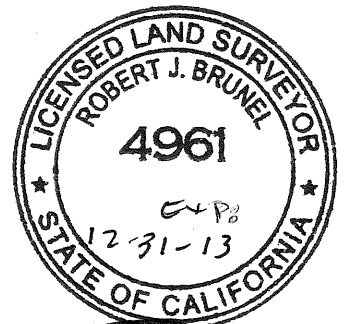
A description of the physical condition of the monument as found and as set or reset: _____

SEE OTHER SIDE

SURVEYOR'S STATEMENT

This Corner Record was prepared by me or under my direction in conformance with the Land Surveyor's Act on JANUARY 10 2012.

Signed Robert J. Brunel P.L.S. or R.C.E. No. 4961



COUNTY SURVEYOR'S STATEMENT

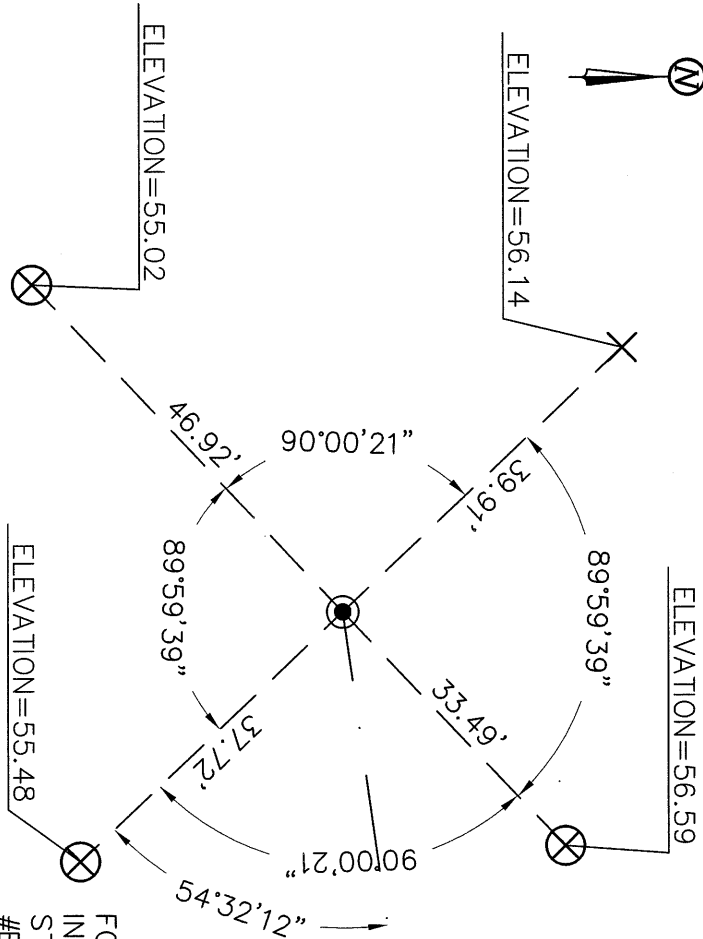
This Corner Record was received 1-16-2012
and examined and filed 2-21-2012

Signed Russell R. Penland P.L.S. or R.C.E. No. 5726

Title COUNTY SURVEYOR

County Surveyor's Comment _____





FOUND 2" BRASS DISC WITH PUNCH IN
CONCRETE INSIDE STANDARD CASTING AT
CEDAR STREET AND CHESTNUT STREET
#B0631 ELEVATION=62.21

FV95 V3

CEDAR STREET

FOUND 3/8" BRASS PIN IN CONCRETE
INSIDE STANDARD CASTING AT CEDAR
STREET AND BELVEDERE STREET
#B0630 ELEVATION=55.26

HX27 X5

LEGEND

- FOUND CITY MONUMENT AS NOTED
- + CUT CROSS IN CONCRETE CURB
- ⊕ CUT CROSS IN CONCRETE SIDEWALK

AA##A#

ALA. CO. MON. ID

CORNER RECORD

TO REFERENCE MONUMENT B0630
AT CEDAR STREET AND BELVEDERE STREET
CITY OF BERKELEY, COUNTY OF ALAMEDA, CALIFORNIA

DECEMBER 8, 2011

SCALE: 1"=20'

F.B. NO. 1290.1 CEDAR MONS.DWG JOB NO. 11-8200