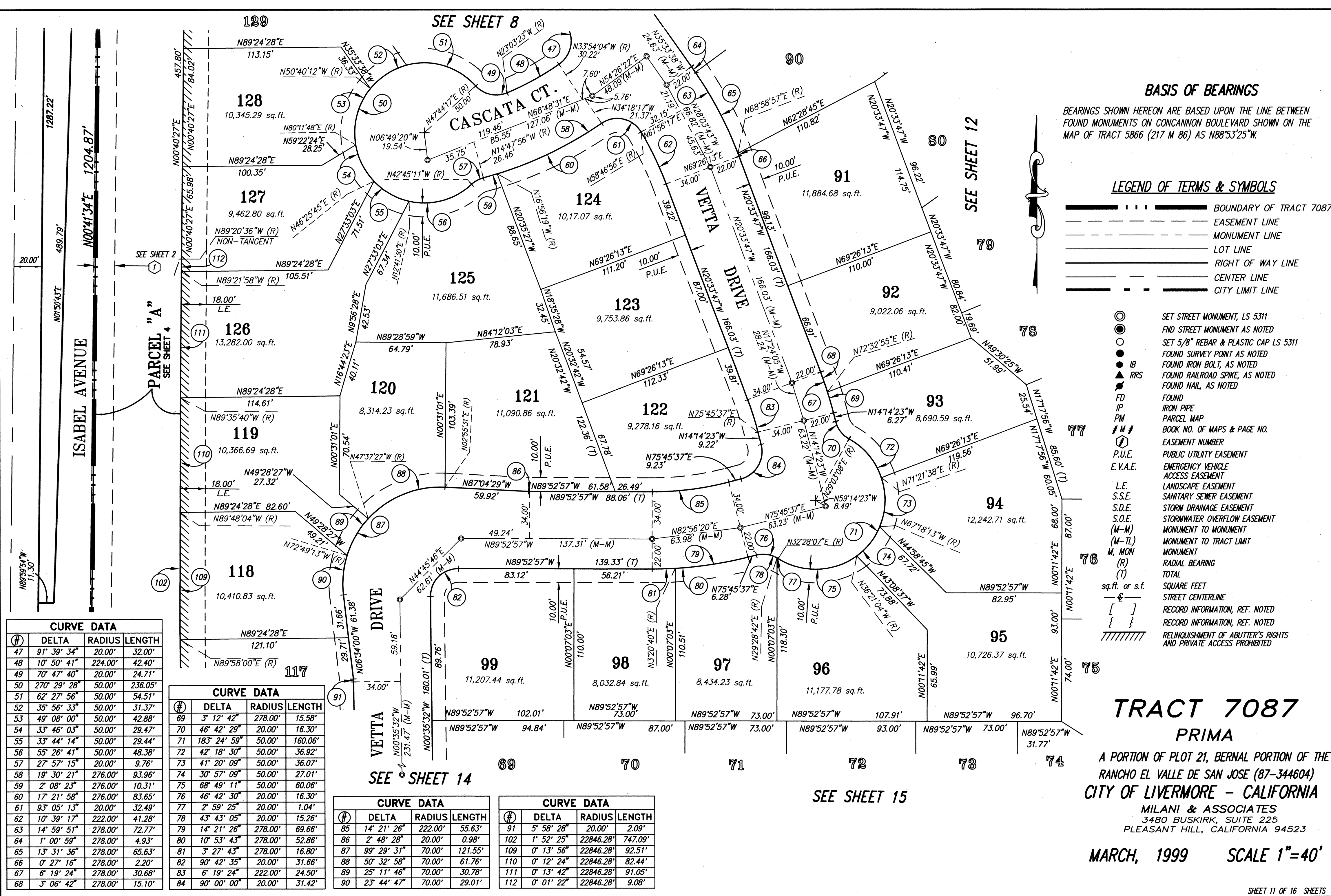


TRACT 7087

MAP BK 250

Pg 97

F:\JOBS\70071-10\FM-11.DWG 11:24 AM 03/01/2000



BASIS OF BEARINGS

BEARINGS SHOWN HEREON ARE BASED UPON THE LINE BETWEEN FOUND MONUMENTS ON CONCANNON BOULEVARD SHOWN ON THE MAP OF TRACT 5866 (217 M 86) AS N88°53'25"W.

LEGEND OF TERMS & SYMBOLS

- BOUNDARY OF TRACT 7087
- EASEMENT LINE
- MONUMENT LINE
- LOT LINE
- RIGHT OF WAY LINE
- CENTER LINE
- CITY LIMIT LINE

- SET STREET MONUMENT, LS 5311
- FND STREET MONUMENT AS NOTED
- SET 5/8" REBAR & PLASTIC CAP LS 5311
- FOUND SURVEY POINT AS NOTED
- FOUND IRON BOLT, AS NOTED
- FOUND RAILROAD SPIKE, AS NOTED
- FOUND NAIL, AS NOTED
- FD
- IP
- PM
- # M #
- P.U.E.
- E.V.A.E.
- L.E.
- S.S.E.
- S.D.E.
- S.O.E.
- (M-M)
- (M-TL)
- M, MON
- (R)
- (T)
- sq. ft. or s.f.
-
- []
- { }
- RELINQUISHMENT OF ABUTTER'S RIGHTS AND PRIVATE ACCESS PROHIBITED

CURVE DATA			
#	DELTA	RADIUS	LENGTH
47	91° 39' 34"	20.00'	32.00'
48	10° 50' 41"	224.00'	42.40'
49	70° 47' 40"	20.00'	24.71'
50	270° 29' 28"	50.00'	236.05'
51	62° 27' 56"	50.00'	54.51'
52	35° 56' 33"	50.00'	31.37'
53	49° 08' 00"	50.00'	42.88'
54	33° 46' 03"	50.00'	29.47'
55	33° 44' 14"	50.00'	29.44'
56	55° 26' 41"	50.00'	48.38'
57	27° 57' 15"	20.00'	9.76'
58	19° 30' 21"	276.00'	93.96'
59	2° 08' 23"	276.00'	10.31'
60	17° 21' 58"	276.00'	83.65'
61	93° 05' 13"	20.00'	32.49'
62	10° 39' 17"	222.00'	41.28'
63	14° 59' 51"	278.00'	72.77'
64	1° 00' 59"	278.00'	4.93'
65	13° 31' 36"	278.00'	65.63'
66	0° 27' 16"	278.00'	2.20'
67	6° 19' 24"	278.00'	30.68'
68	3° 06' 42"	278.00'	15.10'

CURVE DATA			
#	DELTA	RADIUS	LENGTH
69	3° 12' 42"	278.00'	15.58'
70	46° 42' 29"	20.00'	16.30'
71	183° 24' 59"	50.00'	160.06'
72	42° 18' 30"	50.00'	36.92'
73	41° 20' 09"	50.00'	36.07'
74	30° 57' 09"	50.00'	27.01'
75	68° 49' 11"	50.00'	60.06'
76	46° 42' 30"	20.00'	16.30'
77	2° 59' 25"	20.00'	1.04'
78	43° 43' 05"	20.00'	15.26'
79	14° 21' 26"	278.00'	69.66'
80	10° 53' 43"	278.00'	52.86'
81	3° 27' 43"	278.00'	16.80'
82	90° 42' 35"	20.00'	31.66'
83	6° 19' 24"	222.00'	24.50'
84	90° 00' 00"	20.00'	31.42'

CURVE DATA			
#	DELTA	RADIUS	LENGTH
85	14° 21' 26"	222.00'	55.63'
86	2° 48' 28"	20.00'	0.98'
87	99° 29' 31"	70.00'	121.55'
88	50° 32' 58"	70.00'	61.76'
89	25° 11' 46"	70.00'	30.78'
90	23° 44' 47"	70.00'	29.01'

CURVE DATA			
#	DELTA	RADIUS	LENGTH
91	5° 58' 28"	20.00'	2.09'
102	1° 52' 25"	22846.28'	747.09'
109	0° 13' 56"	22846.28'	92.51'
110	0° 12' 24"	22846.28'	82.44'
111	0° 13' 42"	22846.28'	91.05'
112	0° 01' 22"	22846.28'	9.08'

TRACT 7087
PRIMA

A PORTION OF PLOT 21, BERNAL PORTION OF THE
RANCHO EL VALLE DE SAN JOSE (87-344604)
CITY OF LIVERMORE - CALIFORNIA
MILANI & ASSOCIATES
3480 BUSKIRK, SUITE 225
PLEASANT HILL, CALIFORNIA 94523

MARCH, 1999 SCALE 1"=40'

BK 250 Pg 97