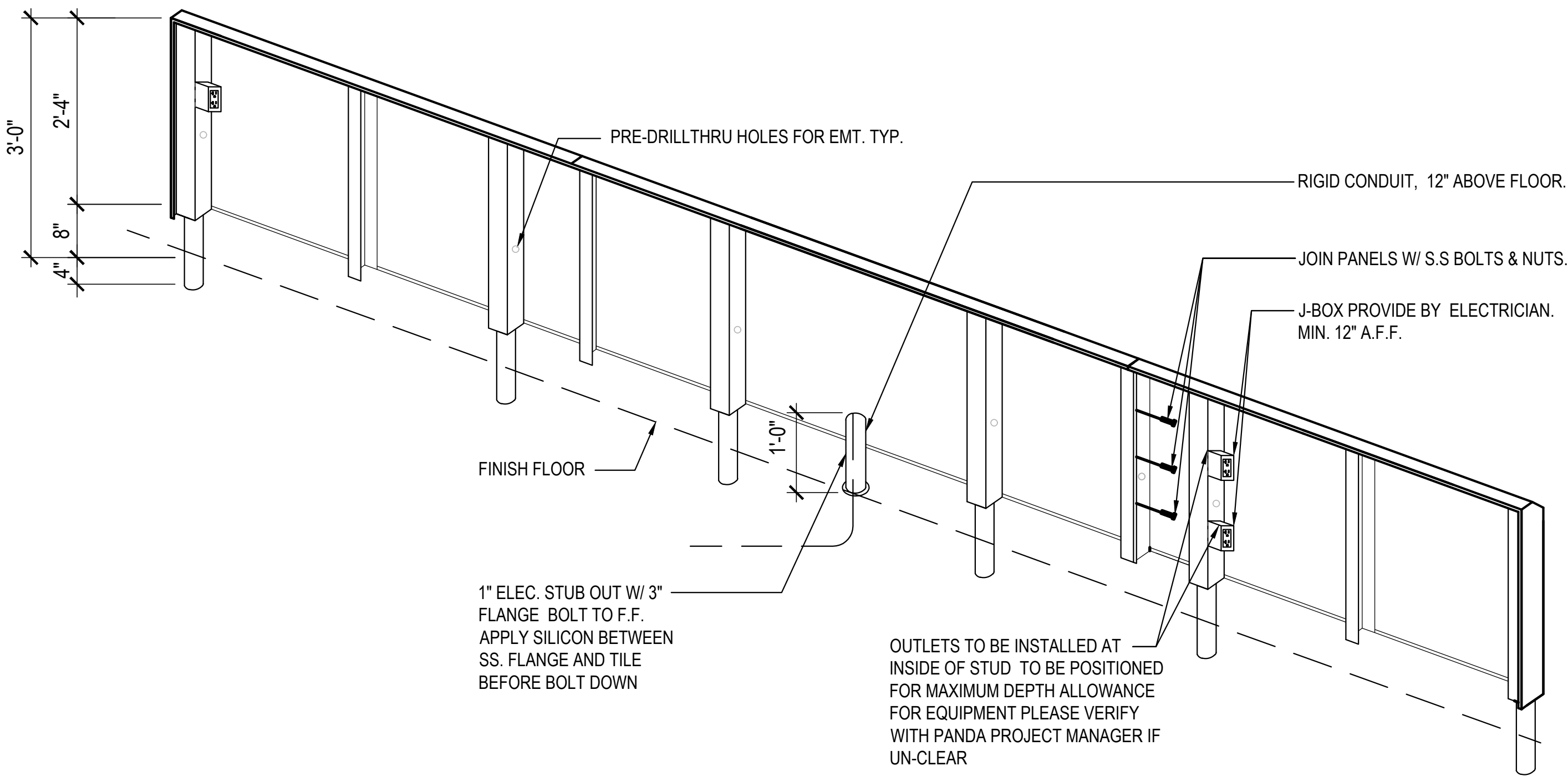


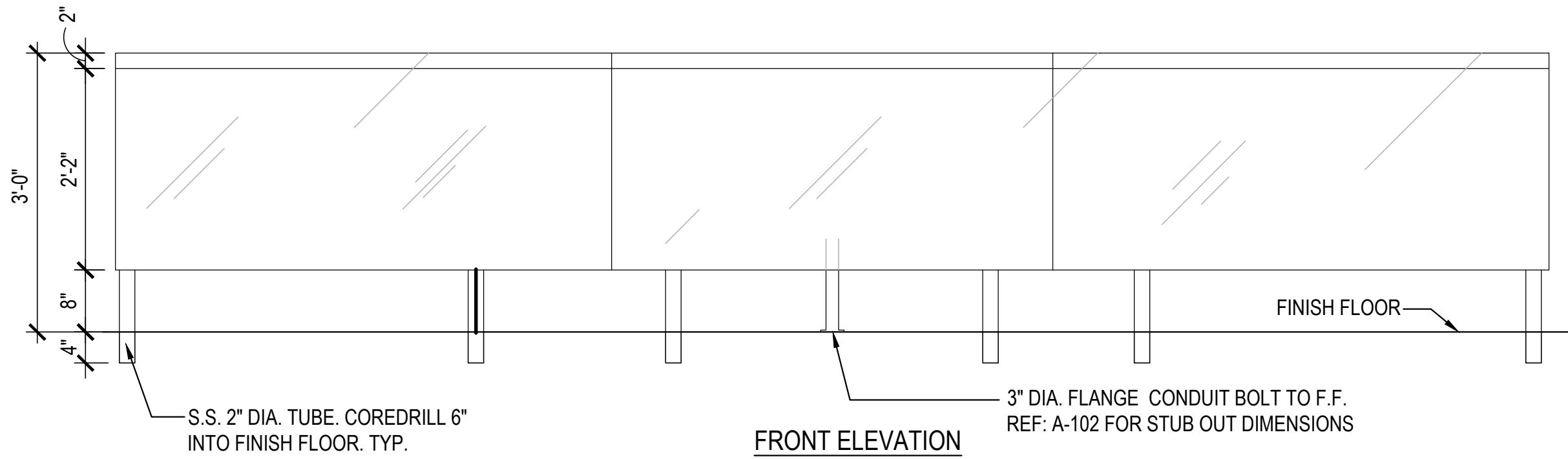
OUTSIDE CORNER DETAIL 3

SCALE: 6" = 1'-0" A-400

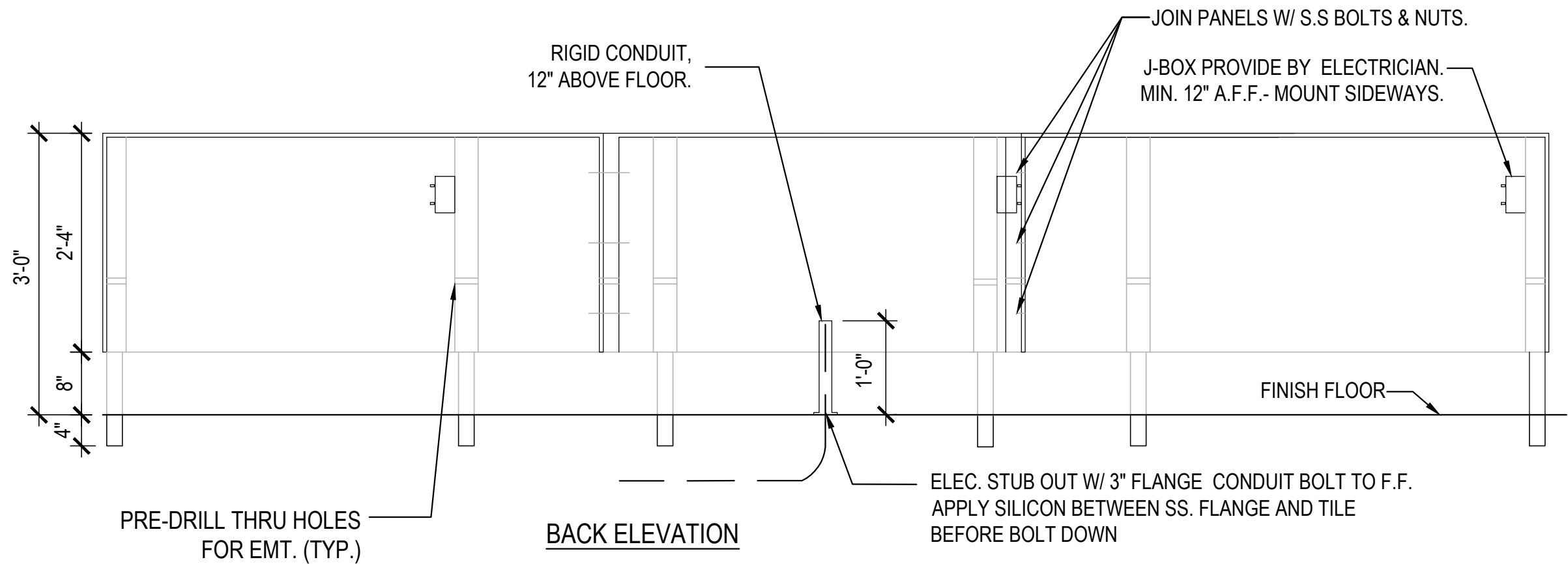


STAINLESS STEEL OUTLET PANEL (ISOMETRIC VIEW) 2

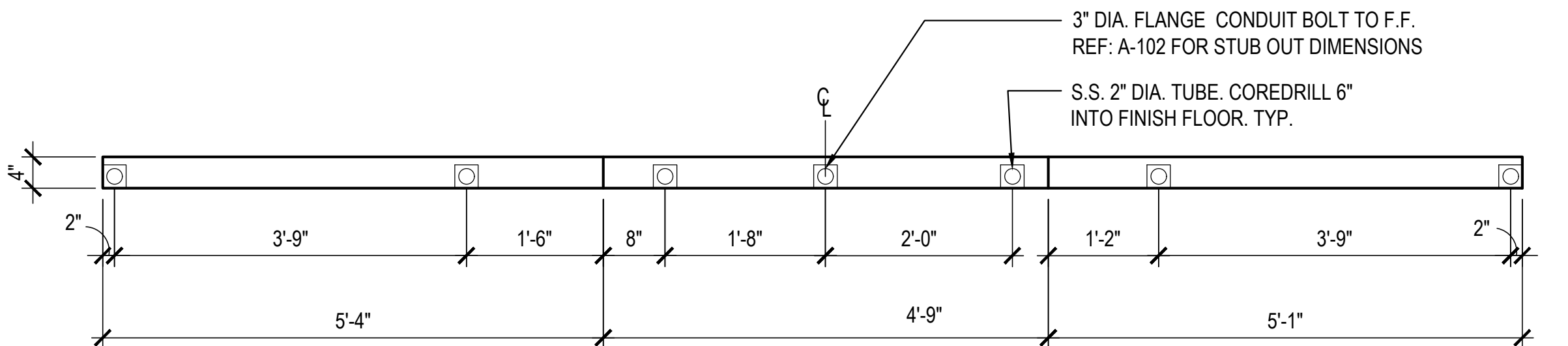
SCALE: NTS A-400



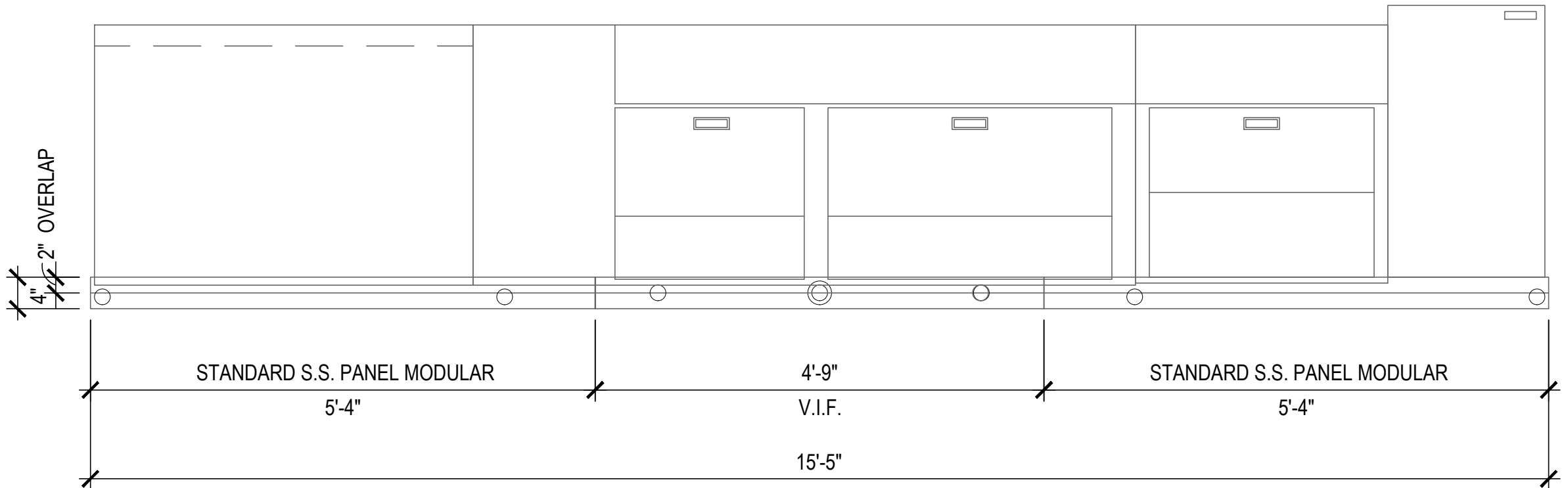
FRONT ELEVATION



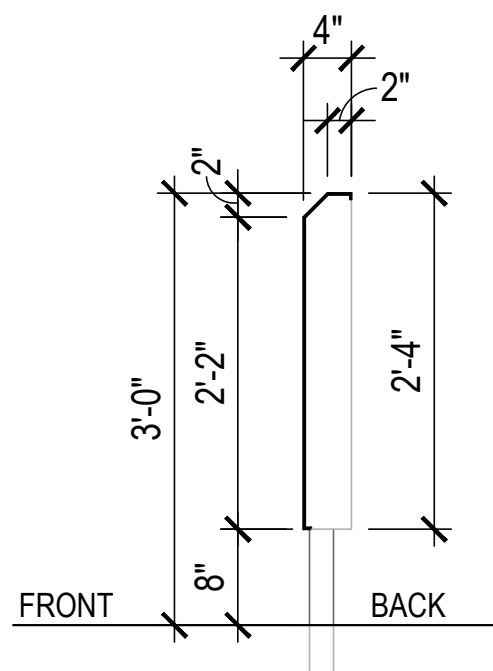
BACK ELEVATION



BOTTOM VIEW



TOP VIEW



SECTION VIEW

STAINLESS STEEL OUTLET PANEL

SCALE: NTS



PANDA RESTAURANT GROUP INC.
1683 Walnut Grove Ave.
Rosemead, California
91770
Telephone: 626.799.9898
Facsimile: 626.372.8288

All ideas, designs, arrangement and plans indicated or represented by this drawing are the property of Panda Express Inc. and were created for use on this specific project. None of these ideas, designs, arrangements or plans may be used by or disclosed to any person, firm, or corporation without the written permission of Panda Express Inc.

REVISIONS:

1	PLAN REVIEW COMMENTS	03/26/2021
2	PLAN REVIEW COMMENTS	04/22/2021

ISSUE DATE:

1	95% SUBMITTAL	01/11/2021
2	100% SUBMITTAL	04/16/2021
3	100% RESUBMITTAL	05/14/2021
4	FINAL SUBMITTAL	06/08/2021

DRAWN BY: STAFF

PANDA PROJECT #: D7395

ARCH PROJECT #:



GARY WANG
& ASSOCIATES, INC.

1000 Corporate Center Dr., Ste. 550
Monterey Park, CA 91754
TEL: (626) 288-6898 FAX: (626) 768-7101
<http://www.garywang.com>



PANDA EXPRESS

ROBINS AFB SHOPPING CENTER
ROBINS AFB, GA

A-400

ARCHITECTURAL
DETAILS

BID SET - 2021/06/28