

CORNER RECORD

Agency Index

BK 150 PG 10

Document Number CR 16318

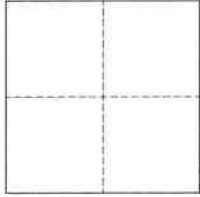
City of Oakland

County of Alameda, California

Brief Legal Description Monument near 2617 Best Avenue

CORNER TYPE

COORDINATES (Optional)



- ☐ Government Corner ☒ Control
☐ Meander ☐ Property
☐ Rancho ☐ Other

Date of Survey November 1, 2022

N. _____ E. _____

Elevation _____

Units ☐ Metric ☐ U.S. Survey Foot

Horizontal Datum _____

Zone _____ Epoch Date _____

Vertical Datum _____

☐ Complies with Public Resources Code §§8801-8819☐ Complies with Public Resources Code §§8890-8902PLS Act Ref.: ☐ 8765(d) ☒ 8771 ☐ 8773 ☐ Other:

Corner/
Monument: ☒ Left as found ☐ Established ☐ Rebuilt ☒ Pre-Construction
☐ Found and tagged ☐ Reestablished ☒ Referenced ☐ Post-Construction

Narrative of corner identified and monument as found, set, reset, replaced, or removed:

☒ See sheet #2 for description(s):

This Corner Record is being filed to reference the position of an existing monument, prior to a sewer rehabilitation project. This document is for preservation purposes only, and no attempt was made to determine the relationship to property, centerline, or right-of-way lines.

SURVEYOR'S STATEMENT

This Corner Record was prepared by me or under my direction in conformance with

the Professional Land Surveyors' Act on November 29, 2022

Signed [Signature] P.L.S. or R.C.E. No. 8040

COUNTY SURVEYOR'S STATEMENT

This Corner Record was received _____

and examined and filed _____

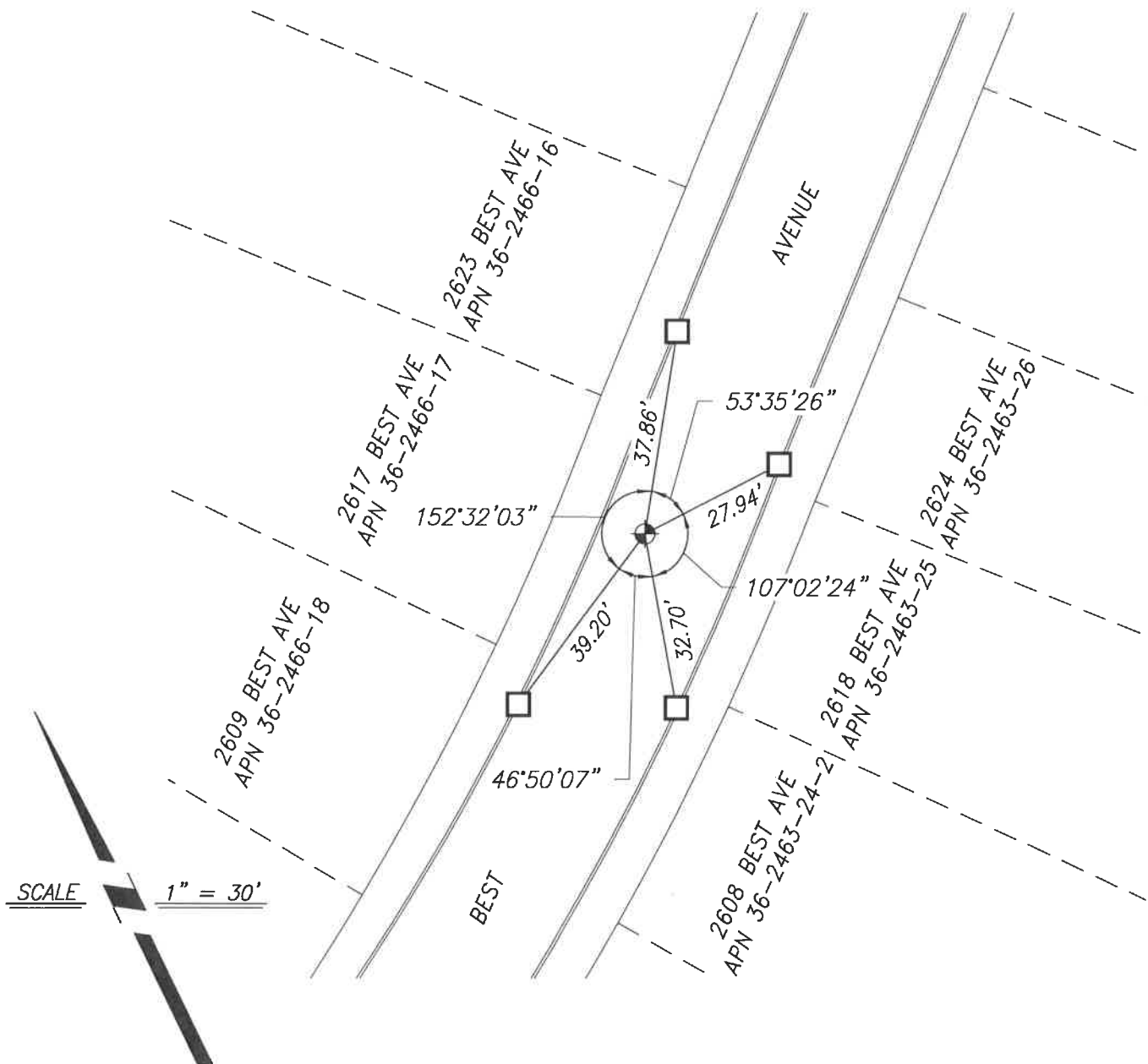
DEC 3 5 2022

Signed [Signature] P.L.S. or R.C.E. No. 7010

Title ALAMEDA COUNTY SURVEYOR

County Surveyor's Comment _____





REFERENCE

(A) MAP OF MAXWELL PARK, FILED MARCH 31, 1921, IN BOOK 7 OF MAPS, PAGE 79, ALAMEDA COUNTY RECORDS

LEGEND



FOUND MONUMENT, CONCRETE MONUMENT WITH 3/8" PIN, IN WELL



CUT CROSS ON CONCRETE CURB AS REFERENCE POINT

NOTES

1. ALL REFERENCES ARE ALAMEDA COUNTY RECORDS