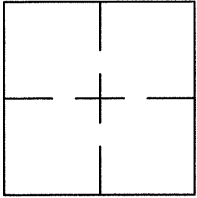


CORNER RECORD

Document Number CR 8162City of OAKLANDCounty of ALAMEDA, CaliforniaBrief Legal Description WELL MONUMENT LOCATED WITHIN THE INTERSECTION OF HARRISON ST.
AND 10TH STREET

CORNER RECORD

Government Corner ☐ Control ☒
 Meander ☐ Property ☐
 Rancho ☐ Other ☐
 Date of Survey 1/21/16

COORDINATES
(Optional)

N. _____
 E. _____
 Zone _____ Datum _____
 Elev. _____

Corner — Left as found ☒ Found and tagged ☐ Established ☐ Reestablished ☐ Rebuilt ☐

Identification and type of corner found: Evidence used to identify or procedure used to establish of reestablish the corner:
FOUND PIN IN WELL MONUMENT.

AS SHOWN ON CITY OF OAKLAND MONUMENT MAP, PAGE 203.

NO CITY MONUMENT DESIGNATION NUMBER AT SUBJECT LOCATION

THIS POINT WAS FOUND IN GOOD CONDITION AFTER A CONSTRUCTION PROJECT
 IN THE VICINITY.

A description of the physical condition of the monument as found and as set or reset: _____

FOUND AND SET POINTS AS SHOWN ON PAGE 2.

THESE TIES ARE FOR THE PURPOSE OF PERPETUATING THE FOUND MONUMENTATION.

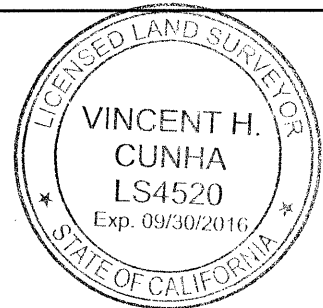
NO CLAIM IS MADE AS TO THE RELATIONSHIP OF THE POINTS OR LINES SHOWN HEREON
 TO TRUE BOUNDARY LOCATIONS.

SURVEYOR'S STATEMENT

This Corner Record was prepared by me or under my direction in conformance with
 the Land Surveyors' Act of FEBRUARY 12, 2016.

Signed VINCENT H. CUNHA L.S. Number LS 4520

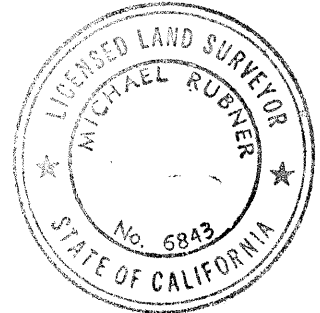
VINCENT H. CUNHA



COUNTY SURVEYOR'S STATEMENT

This Corner Record was received 7 MARCH 2016 and examined
 and filed 30 MARCH 2016.

Signed Michael Rubner Title COUNTY SURVEYOR



County Surveyor's Comment _____

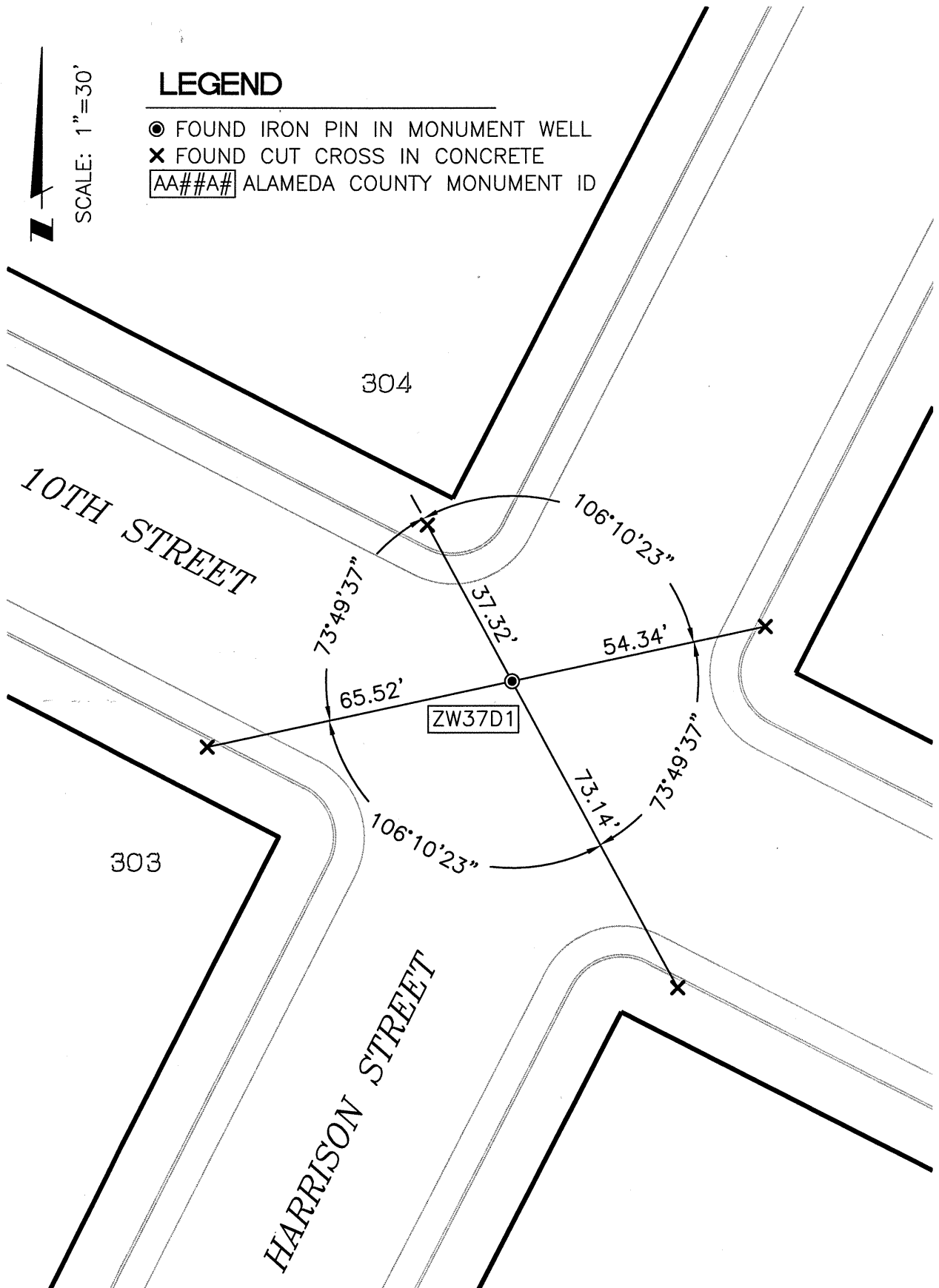
SEE CR 6906



SCALE: 1"=30'

LEGEND

- FOUND IRON PIN IN MONUMENT WELL
- ✕ FOUND CUT CROSS IN CONCRETE
- AA##A# ALAMEDA COUNTY MONUMENT ID



214127-Harrison-CR11