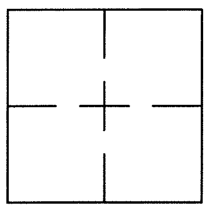


CORNER RECORD

Document Number CR 8265

City of BERKELEY County of ALAMEDA, California

Brief Legal Description WELL MONUMENT LOCATED WITHIN 10TH STREET.
(CITY OF BERKELEY: B0863)



CORNER RECORD

COORDINATES
(Optional)

Government Corner ☐ Control ☒
Meander ☐ Property ☐
Rancho ☐ Other ☐
Date of Survey 4/8/2016

N. _____
E. _____
Zone _____ Datum _____
Elev. _____

Corner — Left as found ☐ Found and tagged ☐ Established ☐ Reestablished ☐ Rebuilt ☒

Identification and type of corner found: Evidence used to identify or procedure used to establish or reestablish the corner:
SET STANDARD WELL MONUMENT WITH DISC WITHIN 10TH STREET APPROXIMATELY 112'
SOUTH OF THE INTERSECTION OF HARRISON STREET.

PER CR 7069 REFERENCE POINTS
THIS POINT WAS CONSTRUCTED AFTER A CONSTRUCTION PROJECT IN THE VICINITY.

A description of the physical condition of the monument as found and as set or reset:
FOUND AND SET POINTS AS SHOWN ON PAGE 2.

THESE TIES ARE FOR THE PURPOSE OF PERPETUATING THE FOUND MONUMENTATION.
NO CLAIM IS MADE AS TO THE RELATIONSHIP OF THE POINTS OR LINES SHOWN HEREON
TO TRUE BOUNDARY LOCATIONS.

SURVEYOR'S STATEMENT

This Corner Record was prepared by me or under my direction in conformance with
the Land Surveyors' Act on APRIL 11, 2016.

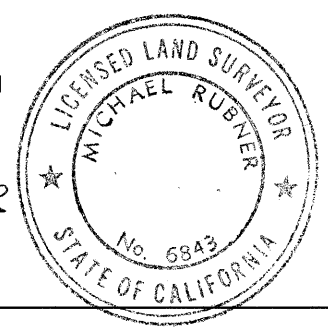
Signed Scott V Cunha L.S. Number LS 8525
SCOTT V. CUNHA



COUNTY SURVEYOR'S STATEMENT

This Corner Record was received 15 APRIL 2016 and examined
and filed 11 MAY 2016.

Signed Michael Rubner Title COUNTY SURVEYOR



County Surveyor's Comment _____

HARRISON STREET

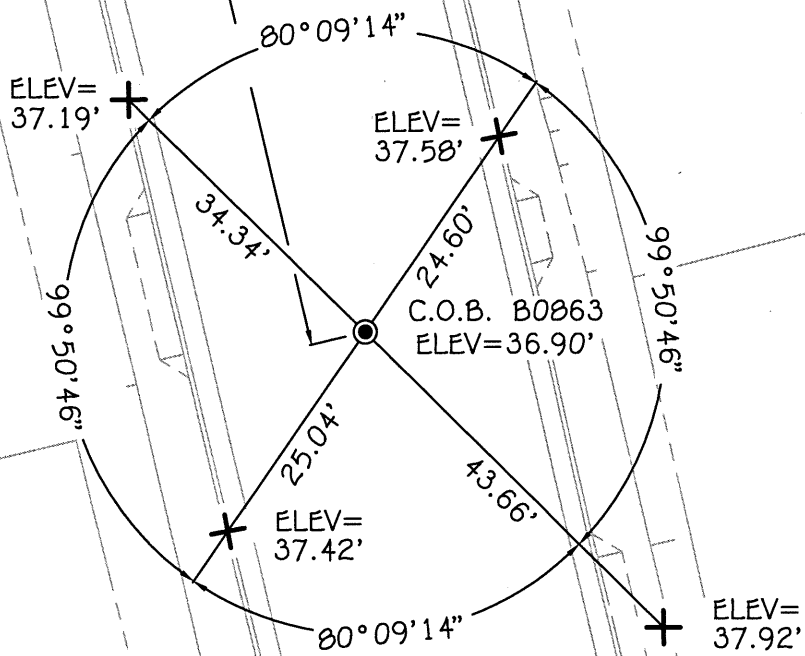


SCALE: 1"=20'

LEGEND

- SET BRASS DISC WITH PUNCH STAMPED 'B0863 L5 8525' IN MONUMENT WELL
- ✕ FOUND CUT CROSS IN CONCRETE PER CR 7069

C.O.B. CITY OF BERKELEY



NOTE

ELEVATIONS SHOWN HEREON ARE BASED UPON CITY OF BERKELEY VERTICAL DATUM.
 C.O.B. B0863 TAKEN AS ELEV= 37.34'
 AS SHOWN ON CR 7069.

STREET
 10TH