

Lower Rock Creek Tract

No. of Lots 12 Mapped 1923

Water System Installed By *Permittees

Road Built By County and Permittees

Electrical Service Available Telephone Available

Access Lots 18, 19, 23 and 27 on dirt road short distance from county road.
All others off of Owen Gorge Road, county paved and maintained.

Lots Front On Near Rock Creek

Terrain In Subdivision Nearly all the sites are level fronting on Rock
Creek, with sparse tree growth. The elevation is approximately 6,000'.

Comments Public sewer not required by Lahontan Regional Water Quality Control
Board because of the low density of the area. *Consists of individual pipes
from Rock Creek to cabins.

U.S. DEPARTMENT OF AGRICULTURE
FOREST SERVICE
INYO NATIONAL FOREST
ROCK CREEK RECREATION AREA
LOWER ROCK CREEK TRACT
SEC. 33, T. 4 S., R. 30 E., M. D. M.
CALIFORNIA
SHEET 3

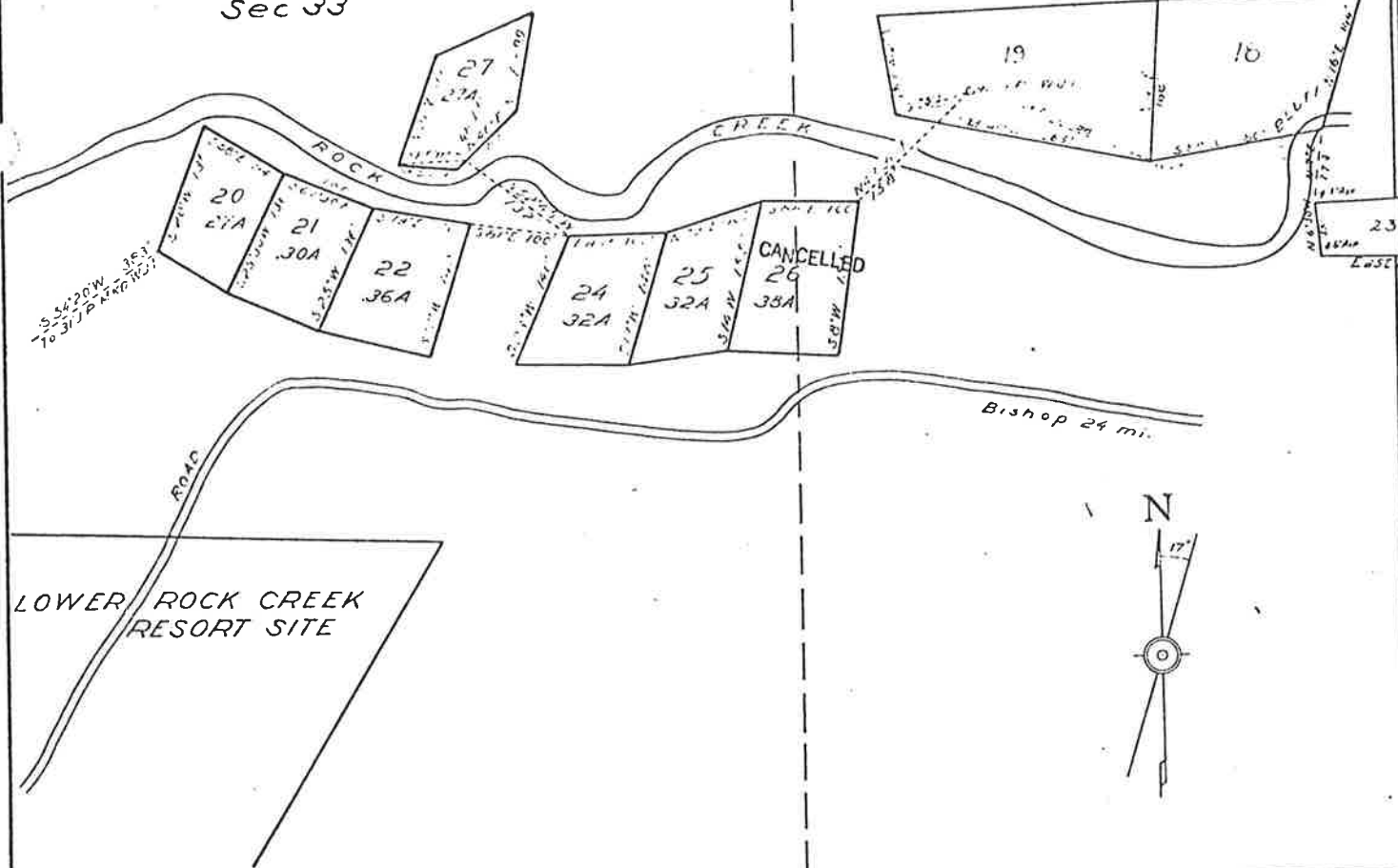
383
Cross Survey by H. H. Simpson
18 & 19, May 1927. LOTS 20-27

Map Scale 1" = 100'

S.W. 1/4 S.W. 1/4
Sec. 28

N.W. 1/4 N.W. 1/4
Sec. 33

N.E. 1/4 N.W. 1/4



Map Scale 1" = 100'
Map drawn by J. P. H. H. H. H.
Corrected by J. P. H. H. H. H.

U. S. DEPARTMENT OF AGRICULTURE
FOREST SERVICE
INYO NATIONAL FOREST
ROCK CREEK RECREATION AREA
LOWER ROCK CREEK TRACT

SHEET 5

Sec. 33 T. 4 S., R. 30 E. M. D. M.
CALIFORNIA

Uses
Compass Survey by D. Robinson
Lots 28-30 Inc. July 1931

Mag. Decl. = 17° E.
Scale 1 inch = 100 feet

