

CORNER RECORD

Agency Index

BK 136 P623

Document Number

CR 14722

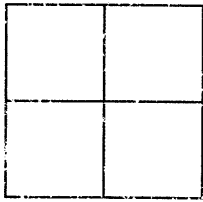
City of EDEN TOWNSHIP

County of

ALAMEDA

California

Brief Legal Description MONUMENT LOCATED WITHIN GREENRIDGE RD AT MESA VERDE WAY



CORNER TYPE

Government Corner	<input type="checkbox"/>	Control	<input checked="" type="checkbox"/>
Meander	<input type="checkbox"/>	Property	<input type="checkbox"/>
Rancho	<input type="checkbox"/>	Other	<input type="checkbox"/>

Date of Survey 9/3/2020

COORDINATES (Optional)

N. E.

Elevation

Units Metric ☐ U.S. Survey Foot ☐

Horizontal Datum

Zone Epoch Date

Vertical Datum

☐ Complies with Public Resources Code §§8801-8819☐ Complies with Public Resources Code §§8890-8902

PLS Act Ref:

☐ 8765 (d)☒ 8771☐ 8773☐ Other:Corner/
Monument:☒ Left as found☐ Established☐ Rebuilt☒ Pre-Construction☐ Found and tagged☐ Reestablished☒ Referenced☐ Post-Construction

Narrative of corner identified and monument as found, set, reset, replaced, or removed:

☐ See sheet #2 for description (s):

FOUND 1/8" PIN IN CONCRETE IN MONUMENT WELL.

FOUND AND SET POINTS AS SHOWN ON PAGE 2.

THIS POINT WAS REFERENCED PRIOR TO A CONSTRUCTION PROJECT IN THE VICINITY.

THE TIES SHOWN HEREON ARE FOR THE PURPOSE OF PERPETUATING FOUND MONUMENTATION.

NO CLAIM IS MADE AS TO THE RELATIONSHIP OF THE POINTS OR LINES SHOWN HEREON TO TRUE BOUNDARY LOCATION.

SURVEYOR'S STATEMENT

This Corner Record was prepared by me or under my direction in conformance with

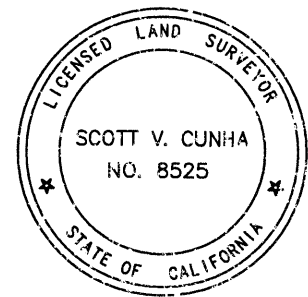
the Professional Land Surveyors' Act on SEPTEMBER 4, 2020

Signed

P.L.S. or R.C.E. No.

8525

SCOTT V. CUNHA



COUNTY SURVEYOR'S STATEMENT

This Corner Record was received

and examined and filed OCT 21 2020

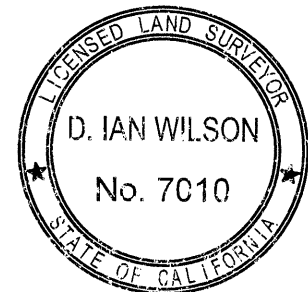
Signed

P.L.S. or R.C.E. No.

7010

Title COUNTY SURVEYOR

County Surveyor's Comment

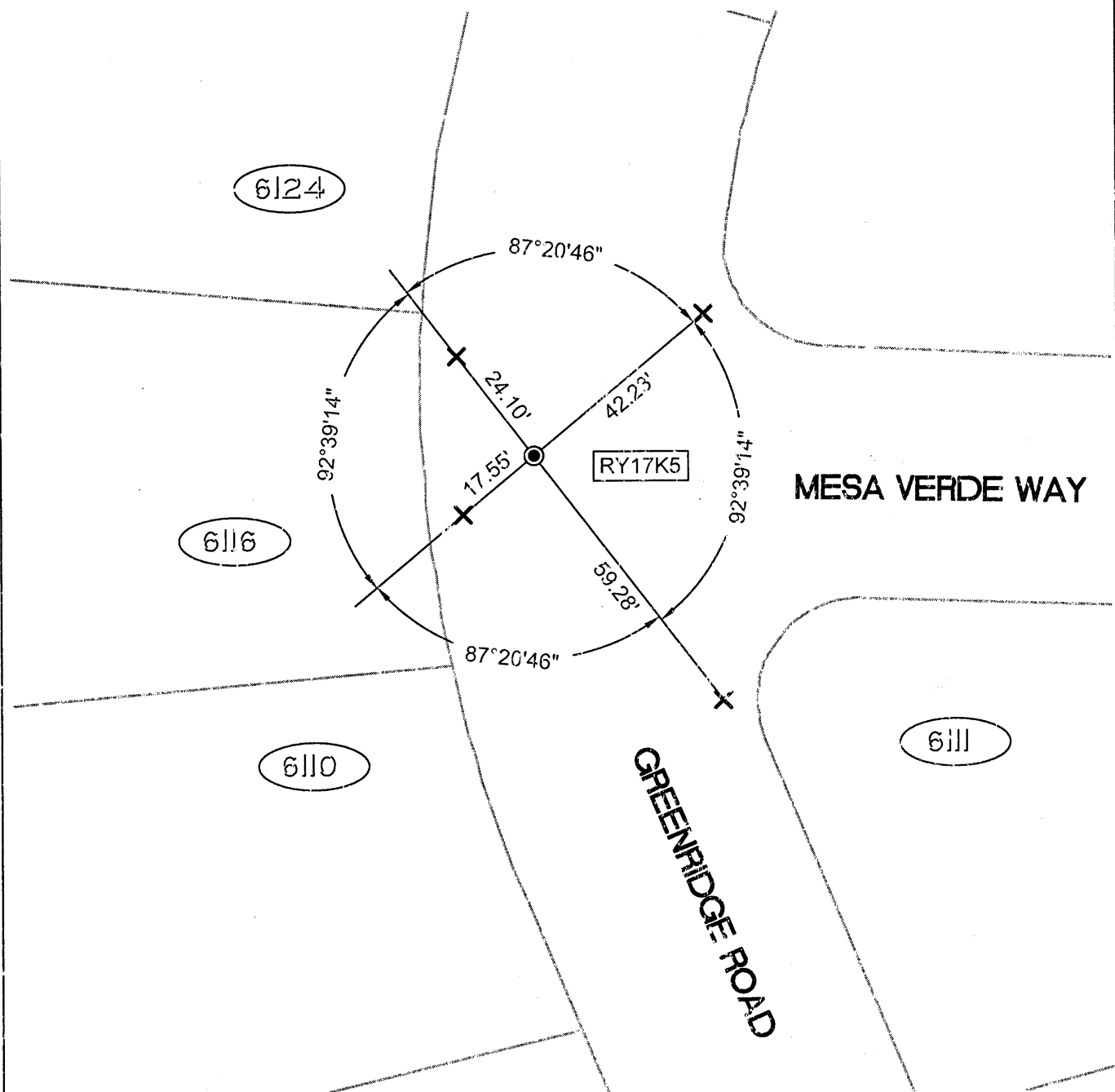


SCALE: 1"=30'

LEGEND

- FOUND 1/8" PIN IN MONUMENT WELL
 ✕ SET NAIL AND TAG IN CURB STAMPED "TOWILL RP"
 AA##A# ALAMEDA COUNTY MONUMENT ID
 19592 REFERENCE STREET ADDRESS

ALL MEASUREMENTS ARE IN U.S. SURVEY FOOT AND DECIMAL THEREOF



APN: 85-1613-3
EPELSG-2016