

CORNER RECORD

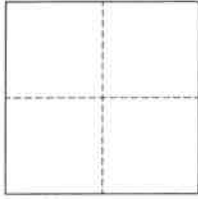
Agency Index BK 150 PG 16
Document Number CR 16325
County of Alameda, California

City of Oakland

Brief Legal Description Monument 19 SE 3 at Intersection of 66th Avenue and San Leandro Street

CORNER TYPE

COORDINATES (Optional)



- ☐ Government Corner ☒ Control
☐ Meander ☐ Property
☐ Rancho ☐ Other

Date of Survey November 16, 2022

N. _____ E. _____

Elevation _____

Units ☐ Metric ☐ U.S. Survey Foot

Horizontal Datum _____

Zone _____ Epoch Date _____

Vertical Datum _____

☐ Complies with Public Resources Code §§8801-8819

☐ Complies with Public Resources Code §§8890-8902

PLS Act Ref.: ☐ 8765(d) ☒ 8771 ☐ 8773 ☐ Other:
Corner/
Monument: ☒ Left as found ☐ Established ☐ Rebuilt ☒ Pre-Construction
☐ Found and tagged ☐ Reestablished ☒ Referenced ☐ Post-Construction

Narrative of corner identified and monument as found, set, reset, replaced, or removed:

☒ See sheet #2 for description(s):

This Corner Record is being filed to reference the position of an existing monument, prior to a sewer rehabilitation project. This document is for preservation purposes only, and no attempt was made to determine the relationship to property, centerline, or right-of-way lines.

SURVEYOR'S STATEMENT

This Corner Record was prepared by me or under my direction in conformance with

the Professional Land Surveyors' Act on December 8, 2022

Signed [Signature] P.L.S. or R.C.E. No. 8040



COUNTY SURVEYOR'S STATEMENT

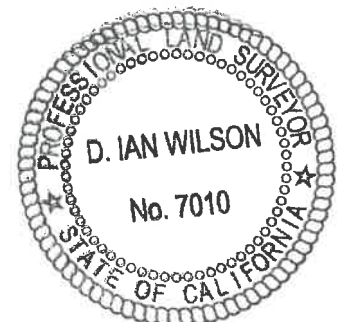
This Corner Record was received _____

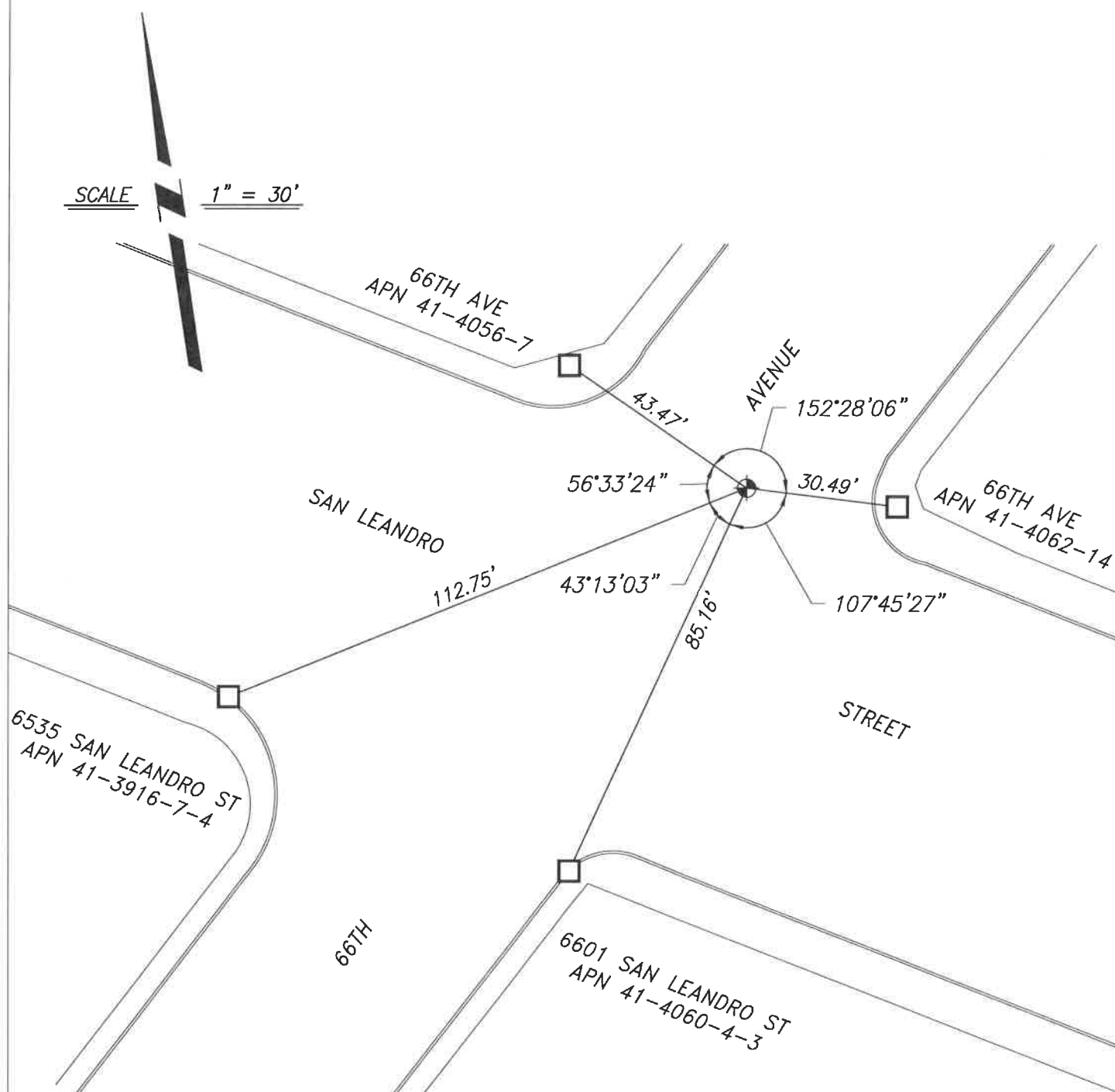
and examined and filed DEC 12 2022

Signed D. Ian Wilson P.L.S. or R.C.E. No. 7010

Title ALAMEDA COUNTY SURVEYOR

County Surveyor's Comment _____







REFERENCE

(A) CITY OF OAKLAND MONUMENT RECORD MAP 1506B462, NO 88, ALAMEDA COUNTY RECORDS.

LEGEND

-  FOUND MONUMENT, CONCRETE
WITH 3/8" IRON PIN, IN WELL
-  CUT CROSS ON CONCRETE AS
REFERENCE POINT

NOTES

1. ALL REFERENCES ARE ALAMEDA COUNTY RECORDS
2. CITY OF OAKLAND COORDINATED MONUMENT 19 SE 3