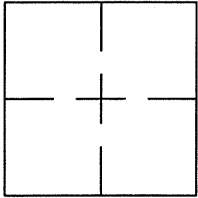


**CORNER RECORD**Document Number CR 8529City of OAKLANDCounty of ALAMEDA, CaliforniaBrief Legal Description WELL MONUMENT LOCATED WITHIN MADISON STREET.**CORNER RECORD**

Government Corner ☐ Control ☐  
 Meander ☐ Property ☐  
 Rancho ☐ Other ☒  
 Date of Survey 6/13/16

**COORDINATES**  
(Optional)

N. \_\_\_\_\_  
 E. \_\_\_\_\_  
 Zone \_\_\_\_\_ Datum \_\_\_\_\_  
 Elev. \_\_\_\_\_

**Corner** — Left as found ☒ Found and tagged ☐ Established ☐ Reestablished ☐ Rebuilt ☐

Identification and type of corner found: Evidence used to identify or procedure used to establish of reestablish the corner:  
FOUND 1/4" PIN IN MONUMENT WELL LOCATED WITHIN THE INTERSECTION OF  
MADISON STREET AND 11TH STREET.

THIS POINT WAS REFERENCED PRIOR TO A CONSTRUCTION PROJECT IN THE VICINITY.

A description of the physical condition of the monument as found and as set or reset: \_\_\_\_\_

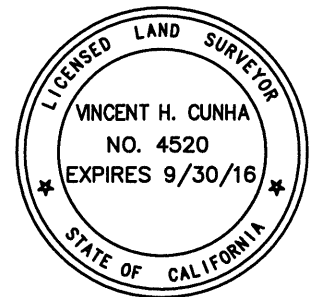
FOUND AND SET POINTS AS SHOWN ON PAGE 2.

THE TIES SHOWN HEREON ARE FOR THE PURPOSE OF PERPETUATING FOUND MONUMENTATION.  
NO CLAIM IS MADE AS TO THE RELATIONSHIP OF THE POINTS OR LINES SHOWN HEREON TO  
TRUE BOUNDARY LOCATIONS.

**SURVEYOR'S STATEMENT**

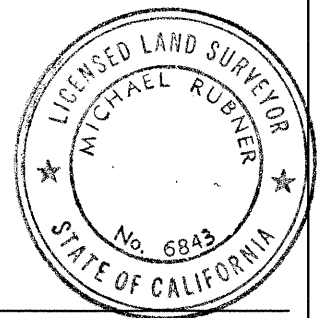
This Corner Record was prepared by me or under my direction in conformance with  
 the Land Surveyors' Act on June 16, 2016.

Signed Vincent H. Cunha L.S. Number LS 4520  
VINCENT H. CUNHA

**COUNTY SURVEYOR'S STATEMENT**

This Corner Record was received 8 July 2016 and examined  
 and filed 25 July 2016.

Signed Michael Rubner Title COUNTY SURVEYOR



**County Surveyor's Comment** \_\_\_\_\_



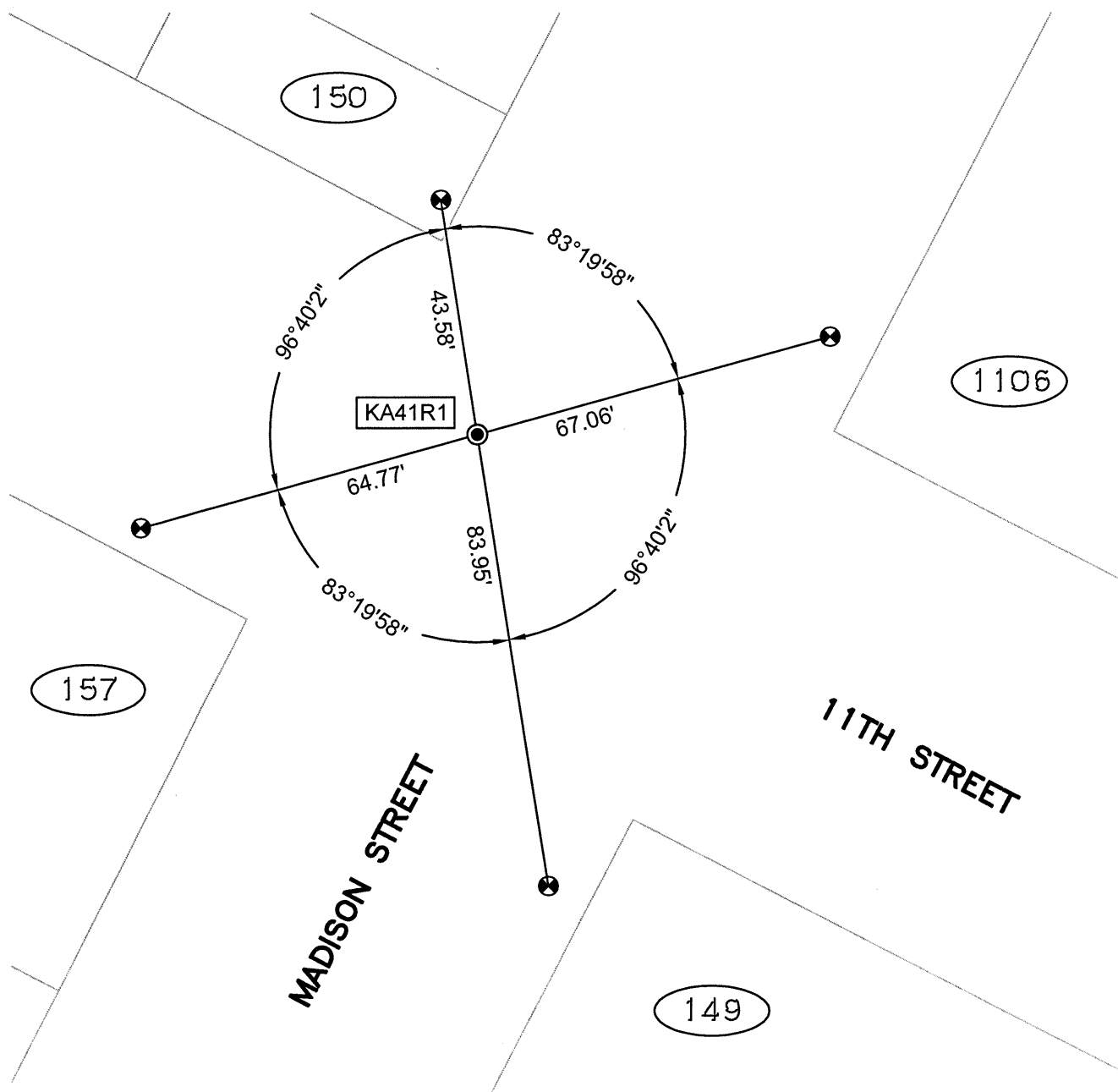
SCALE: 1"=30'

## LEGEND

- FOUND 1/4" PIN IN MONUMENT WELL
- ⊗ SET CUT CROSS IN WALK
- ✕ SET CUT CROSS IN CURB
- SET REBAR & CAP STAMPED "CEI RP"

(19592) REFERENCE STREET ADDRESS

AA##A# ALAMEDA COUNTY MONUMENT ID



216040-Madison-CR7