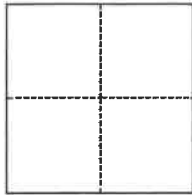


CORNER RECORD

Agency Index

BK 149 PG 80

Document Number CR 16274

City of SAN LEANDRO County of ALAMEDA, CaliforniaBrief Legal Description INTERSECTION EAST 14TH STREET & THRUSH AVENUE**CORNER TYPE****COORDINATES (Optional)**

- ☐ Government Corner ☐ Control
☐ Meander ☐ Property
☐ Rancho ☒ Other

Date of Survey June 3, 2022N. E. Elevation Units ☐ Metric ☐ U.S. Survey FootHorizontal Datum Zone Epoch Date Vertical Datum ☐ Complies with Public Resources Code §§8801-8819☐ Complies with Public Resources Code §§8890-8902PLS Act Ref.: ☐ 8765(d) ☒ 8771 ☐ 8773 ☐ Other:

Corner/
Monument: ☒ Left as found ☐ Established ☐ Rebuilt ☒ Pre-Construction
☐ Found and tagged ☐ Reestablished ☒ Referenced ☐ Post-Construction

Narrative of corner identified and monument as found, set, reset, replaced, or removed:

☐ See sheet #2 for description(s):

FOUND MONUMENT PER CR # 1946 AS SHOWN ON SIDE 2. SET BRASS NAILS & TAGS STAMPED "ALA CO SURV" IN LEAD IN TOP OF CURB, UNLESS OTHERWISE NOTED, AS STRADDLERS FOR FOUND MONUMENT. UPDATED PREVIOUS 8771(b) CORNER RECORD (CR # 15736).

SURVEYOR'S STATEMENT

This Corner Record was prepared by me or under my direction in conformance with

the Professional Land Surveyors' Act on August 19, 2022Signed (P.L.S.) or R.C.E. No. 8427**COUNTY SURVEYOR'S STATEMENT**

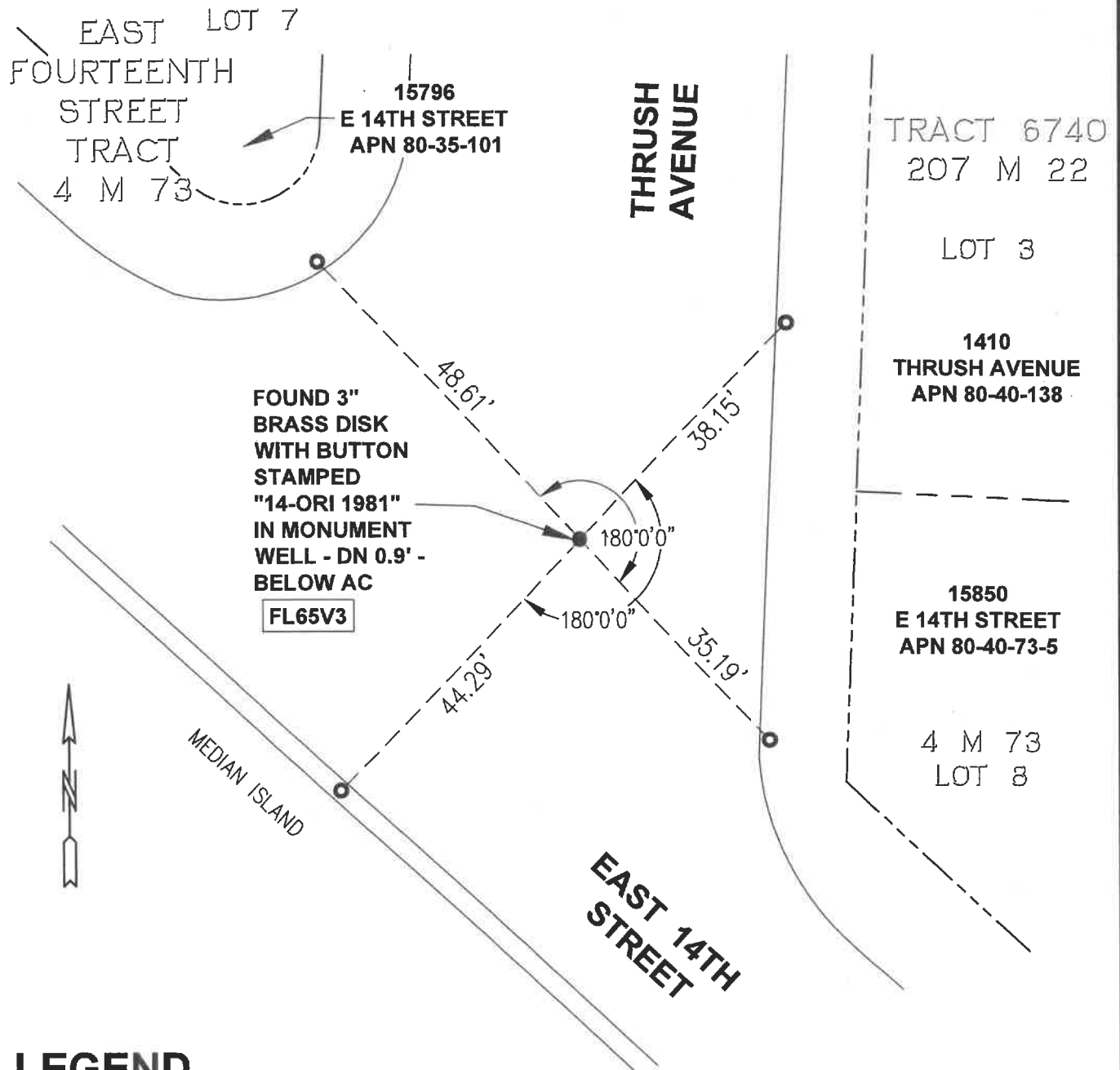
This Corner Record was received

and examined and filed

OCT 17 2022Signed (P.L.S.) or R.C.E. No. 7010Title ALAMEDA COUNTY SURVEYOR

County Surveyor's Comment





LEGEND

AA##A#	ALAMEDA COUNTY MONUMENT ID
○	SET BRASS NAIL AND TAG "ALA CO SURV" IN LEAD IN TOP OF CURB
#####	STREET ADDRESS
—————	CURB LINE
-----	PROPERTY LINE
APN	ASSESSOR'S PARCEL NUMBER

