

TRACT NO. 5071 NORTHPOINT UNIT NO. 2

CONSISTING OF FIVE SHEETS
BEING A PORTION OF THE SOUTHEAST QUARTER AND
A PORTION OF THE NORTHEAST QUARTER OF SECTION
12, TOWNSHIP 7 SOUTH, RANGE 2 WEST, M.D.B. & M.
LYING ENTIRELY WITHIN THE CITY OF
CUPERTINO, CALIFORNIA
MARCH, 1972



NOTES AND LEGEND

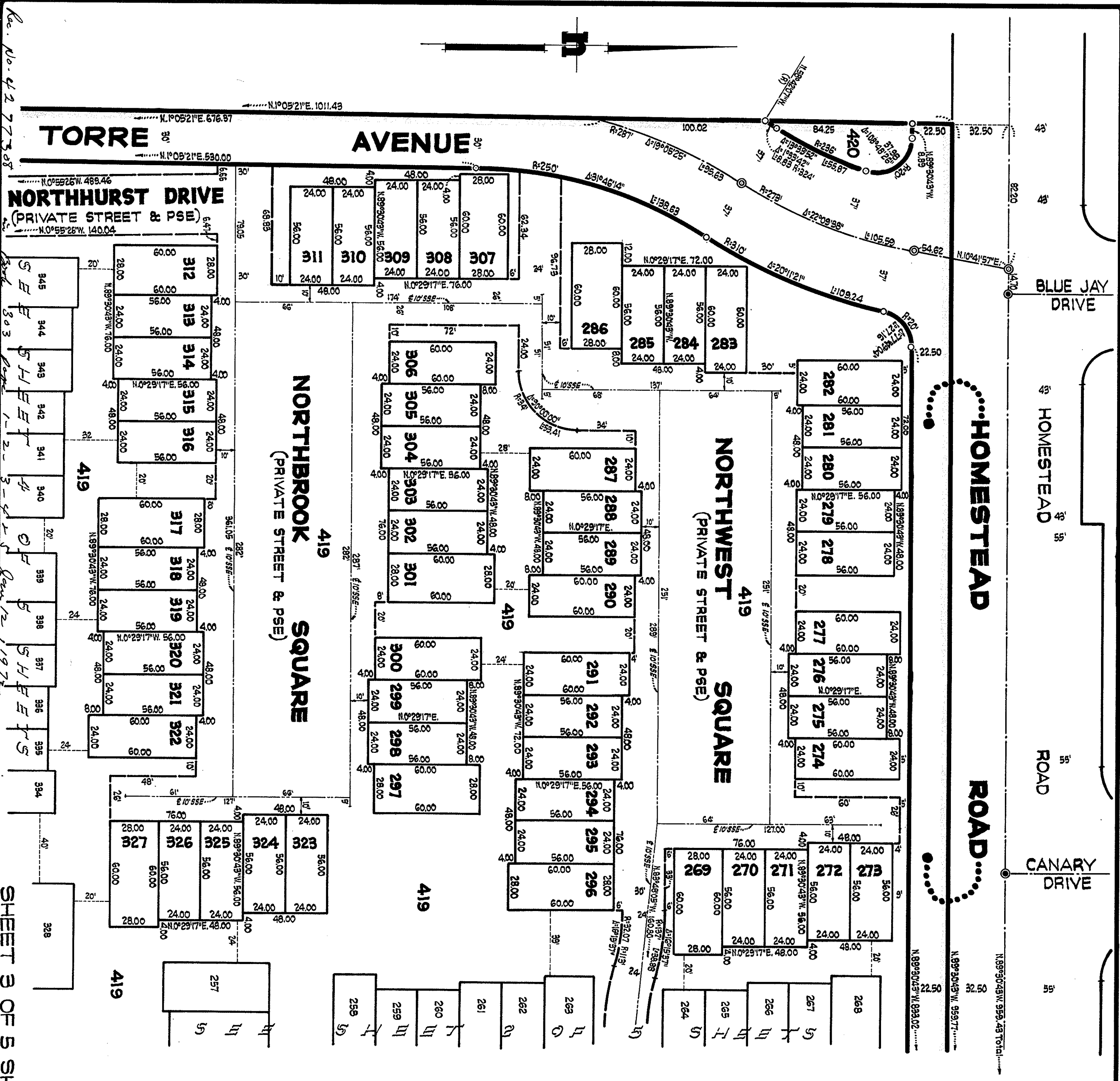
The blue border line indicates the boundary of land subdivided by this map.
The area within the blue border line is 19,387 acres.
All distances and dimensions are shown in feet and decimals thereof.
PSE Indicates Public Service Easement.
SSE Indicates Sanitary Sewer Easement.
● Indicates a 1" iron pipe monument set.
○ Indicates a 3/4" iron pipe monument found unless otherwise noted.
⊙ Indicates a Standard City monument set.
⦿ Indicates a Standard City monument found unless otherwise noted.

SPECIAL NOTE

All bearings not shown are parallel with or at right angles to the given bearings of each lot or group of lots.

BASIS OF BEARING

The bearing, N84°10'08"E, between monuments No. L-273 and L-274 set by the California State Division of Highways as shown on the California State Highway Monument Map 4-SCI-280-PM-93 as said map is on file with the Department of Public Works of the County of Santa Clara.



GEORGE S. NOLTE AND ASSOCIATES
CIVIL ENGINEERS - PLANNERS - SURVEYORS
SAN JOSE - SAN FRANCISCO - WALNUT CREEK - SAN DIEGO

303
3