

PARCEL MAP 3731

EDEN TOWNSHIP - ALAMEDA COUNTY CALIFORNIA

RAYMOND F. GREENWOOD, INC.
CIVIL ENGINEER

CASTRO VALLEY, CALIF.
FEBRUARY, 1982

1" = 30'

BASIS OF BEARINGS

The line between the two concrete monuments shown 345.99 feet apart on Dexter Way taken as N 21° 38' 30" W.

LEGEND

- ⊙ Alameda County Standard Concrete Monument
- ① Non - Filed Survey by John A. Mancini, No. 1905-A, Sept, 1947
- Exterior boundary line

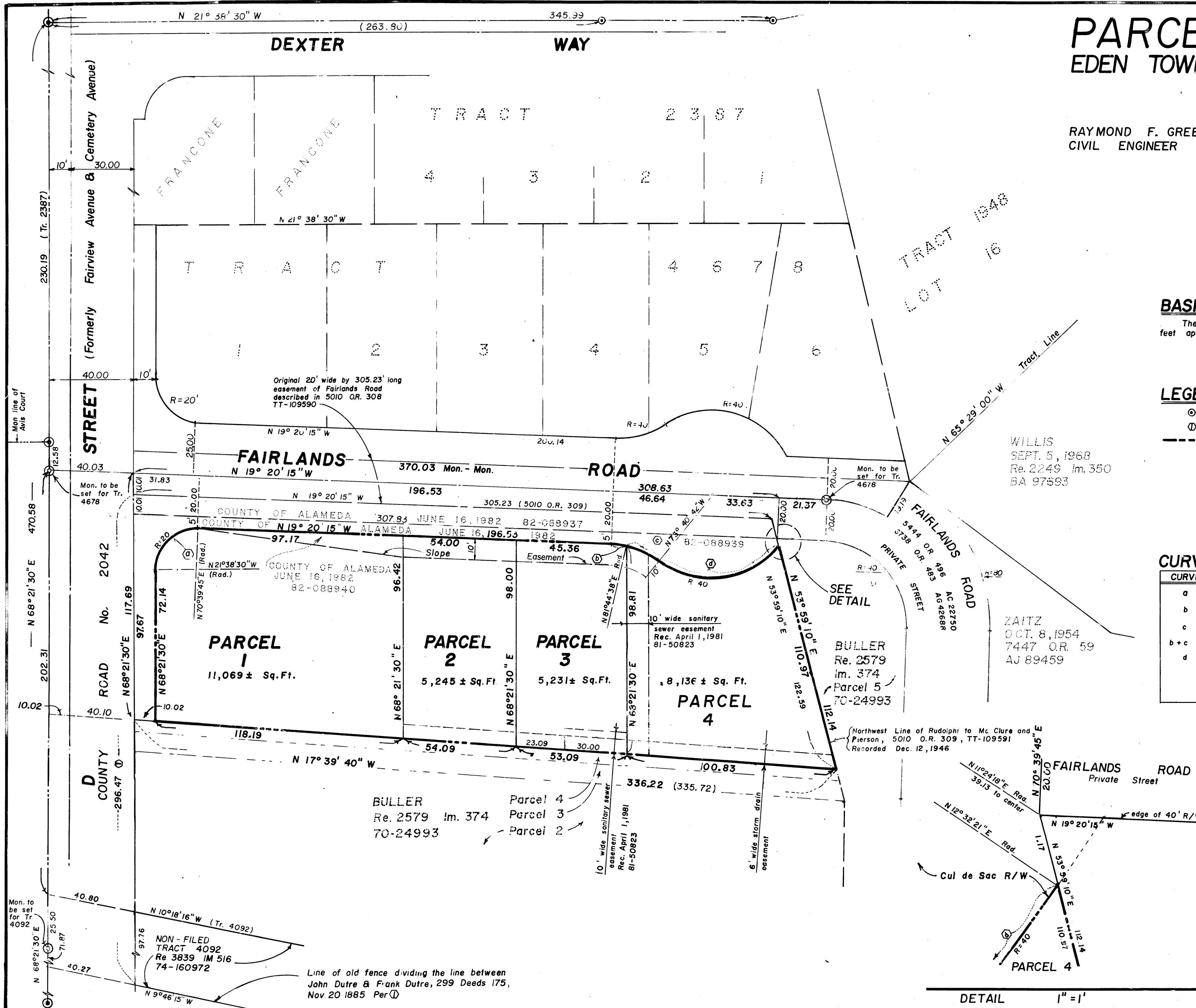
CURVE DATA

CURVE	RADIUS	DELTA	LENGTH
a	20	92° 18' 15"	32.22
b	40	11° 04' 53"	7.74
c	40	24° 34' 40"	17.16
b + c	40	35° 39' 33"	24.90
d	40	93° 46' 57"	65.47

★ USE WITH CAUTION ★
THIS IS A PUBLIC WORKS DEPARTMENT
WORKING COPY OF AN OFFICIAL MAP
ON FILE IN THE OFFICE OF THE COUNTY
RECORDER, COUNTY OF ALAMEDA. OF-
FICE INFORMATION OR CALCULATIONS
MAY HAVE BEEN ADDED HEREON.

#83-095113

SHEET 2 OF 2 SHEETS
81 A02



filed 6-2-83

138/47

138/47

PM 3731

138/47