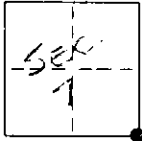


CORNER RECORD

COUNTY OF ~~DIAMOND~~ MONTE T. 8N R. 23E MDR MERIDIAN CALIFORNIA
 CORNER TYPE: GOV'T. CORNER ☒ MEANDER ☐ RANCHO ☐ CONTROL ☐ OTHER ☐
 CORNER IDENTIFICATION - DATE OF VISIT March 9, 1988



PT. #214

CORNER - LEFT AS FOUND ☒ FOUND AND TAGGED ☐ REESTABLISHED OBLITERATED CORNER ☐ REBUILT ☐

PHYSICAL DESCRIPTION OF CORNER FOUND: EVIDENCE AND METHOD USED TO IDENTIFY OR REESTABLISH Found US660
brass cap, flush with ground, set on 2" IF. Located in heavy wild roses 0.5'
north of a barbed wire fence, 27'± north centerline Larson Lane, 187'± NW of
RP #40468, 255'± ENE of RP #170405 and 4900'± east of Hwy 395 at Larson Lane
(Post Mile 109.98) Also found 1 1/4" ODEF with yellow plastic cap stamped LS 5149
4'± NE of US660 cap on edge of irrigation ditch

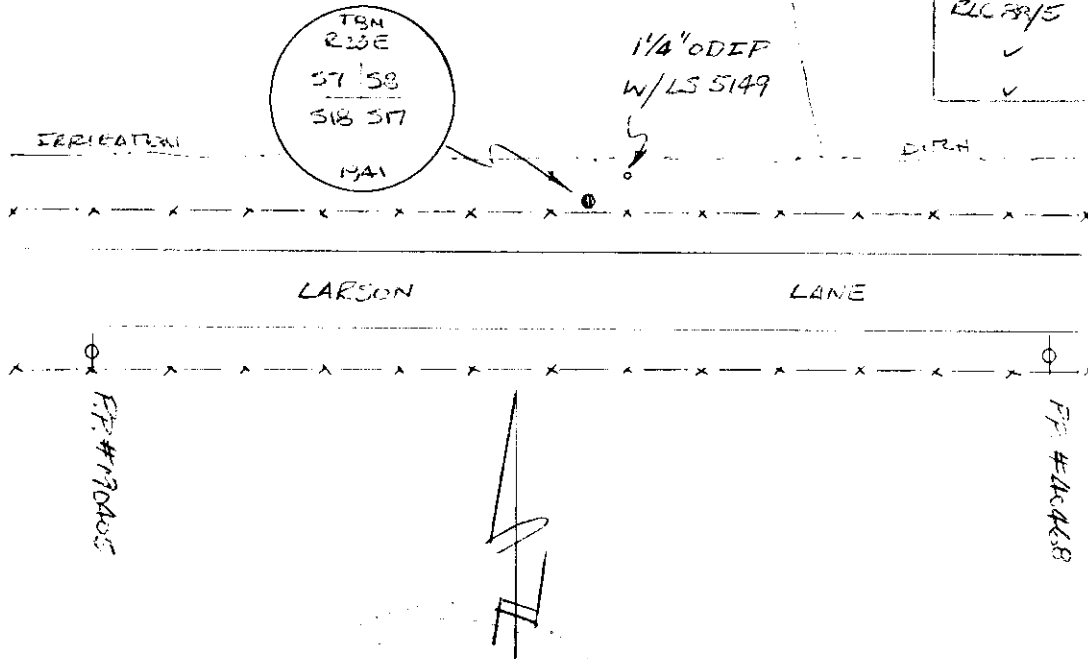
PHYSICAL DESCRIPTION OF MONUMENTS REBUILT OR PERPETUATED

CALIFORNIA COORDINATE SYSTEM ORDER: FIRST ☐ SECOND ☐ THIRD ☒
 STATIONS USED: NGS (USC & GS) ☐ STATE ☒ COUNTY ☐ OTHER ☐ STATION MILL AZ MK STATION FM 109.64
 ZONE 3 ELEVATION _____ NORTHINGS (Y) 746,524± EASTINGS (X) 2,290,760±

SKETCH: (Include reference tie or witness points, remarks and topo of area)

PHOTO INFO

ROLL	EXP.	DIR
RLC 89/5	4	DOWN
✓	5	W
✓	6	E



SURVEYOR'S CERTIFICATE

THIS CORNER RECORD WAS PREPARED BY ME OR UNDER MY DIRECTION IN CONFORMANCE WITH THE LAND SURVEYORS ACT ON MARCH 9, 1988

SIGNED: [Signature]

L.S. or R.C.E. No. 4468

SEAL

COUNTY SURVEYOR'S CERTIFICATE

THIS CORNER RECORD WAS RECEIVED 9-30 1988 AND EXAMINED AND FILED 9-30 1988

BY: [Signature]

TITLE: COUNTY SURVEYOR

DOCUMENT No. 8N 23-7-1

STATEMENT ON BACK OF SHEET

YES ☐ NO ☒