

# CORNER RECORD

Agency Index

BK 142 PG 44

Document Number

CR 15493

City of OAKLAND

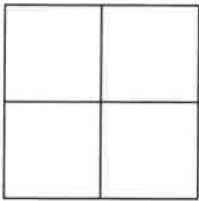
County of

ALAMEDA

, California

Brief Legal Description

WELL MONUMENT LOCATED WITHIN WEST GRAND AVE AT CHESTNUT ST



## CORNER TYPE

Government Corner ☐ Control ☒  
Meander ☐ Property ☐  
Rancho ☐ Other ☐

Date of Survey 05/11/2021

## COORDINATES (Optional)

N. E.

Elevation

Units Metric ☐ U.S. Survey Foot ☐

Horizontal Datum

Zone Epoch Date

Vertical Datum

☐ Complies with Public Resources Code §§8801-8819☐ Complies with Public Resources Code §§8890-8902PLS Act Ref: ☐ 8765 (d)☒ 8771☐ 8773☐ Other:Corner/Monument: ☒ Left as found☐ Established☐ Rebuilt☒ Pre-Construction☐ Found and tagged☐ Reestablished☒ Referenced☐ Post-Construction

Narrative of corner identified and monument as found, set, reset, replaced, or removed:

☐ See sheet #2 for description (s):

FOUND 1/4" PIN IN CONCRETE IN MONUMENT WELL

FOUND AND SET POINTS AS SHOWN ON PAGE 2.

THIS POINT WAS REFERENCED PRIOR TO A CONSTRUCTION PROJECT IN THE VICINITY.

THE TIES SHOWN HEREON ARE FOR THE PURPOSE OF PERPETUATING FOUND MONUMENTATION.

NO CLAIM IS MADE AS TO THE RELATIONSHIP OF THE POINTS OR LINES SHOWN HEREON TO TRUE BOUNDARY LOCATION.

## SURVEYOR'S STATEMENT

This Corner Record was prepared by me or under my direction in conformance with

the Professional Land Surveyors' Act on MAY 30, 2021.

Signed John T. May P.L.S. or R.C.E. No. 8570

JOHN T. MAY



## COUNTY SURVEYOR'S STATEMENT

This Corner Record was received

and examined and filed OCT 26 2021

Signed D. Ian Wilson P.L.S. or R.C.E. No. 7010

Title COUNTY SURVEYOR

County Surveyor's Comment

CITY PROJECT NO. 1004419





## LEGEND

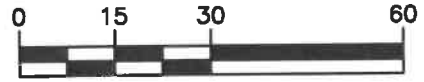
● FOUND 1/4" PIN IN CONCRETE IN MONUMENT WELL

✕ SET NAIL AND TAG STAMPED "TOWILL RP" IN CURB

APN ASSESSOR'S PARCEL NUMBER

AA##A# ALAMEDA COUNTY MONUMENT ID

19592 REFERENCE STREET ADDRESS



GRAPHIC SCALE: 1 INCH = 30 FT

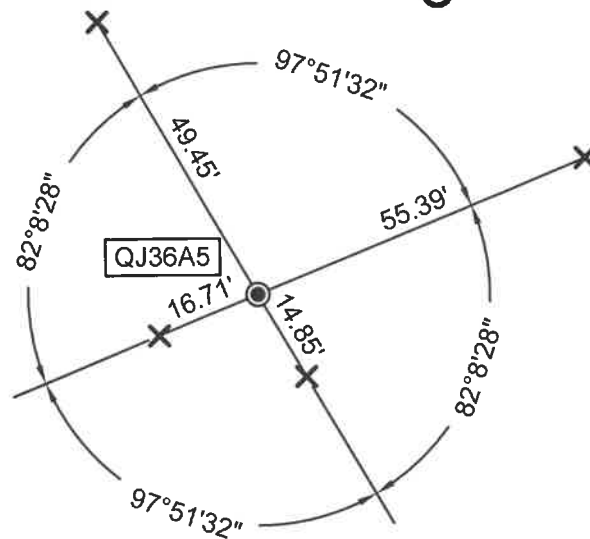
ALL MEASUREMENTS ARE IN U.S. SURVEY FOOT AND DECIMAL THEREOF

2200 ADELINE ST  
APN 5-427-3

CHESTNUT ST

1050 W GRAND  
APN 5-428-1-1

W GRAND AVE



1100 W GRAND  
APN 5-415-3-3

APN 5-415-4

1075 W GRAND AVE  
APN 5-414-17-3

16602-Pre-W Grand Ave-CR-78