

REVISED

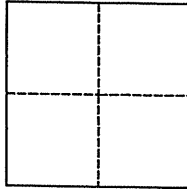
# CORNER RECORD

Agency Index BK 102 PG 25  
Document Number CR 10629

City of CASTRO VALLEY County of ALAMEDA, California  
Brief Legal Description QV66G7 (FAIRMONT DRIVE EAST OF FOOTHILL BLVD)

## CORNER TYPE

## COORDINATES (Optional)



Government Corner ☒ Control ☐  
Meander ☐ Property ☐  
Rancho ☐ Other ☐

N. \_\_\_\_\_ E. \_\_\_\_\_

Elevation \_\_\_\_\_

Units Metric ☐ U.S. Survey Foot ☒

Horizontal Datum \_\_\_\_\_

Zone \_\_\_\_\_ Epoch Date \_\_\_\_\_

Vertical Datum \_\_\_\_\_

☐ Complies with Public Resources Code §§8801-8819

☐ Complies with Public Resources Code §§8890-8902

PLS Act Ref.: ☒ 8765(d) ☐ 8771 ☐ 8773 ☐ Other:

Corner/  
Monument: ☐ Left as found ☐ Established ☐ Rebuilt ☒ Pre-Construction  
☐ Found and tagged ☐ Reestablished ☐ Referenced ☐ Post-Construction

Narrative of corner identified and monument as found, set, reset, replaced, or removed:

☒ See sheet #2 for description(s):

*FOUND COUNTY BRASS CAP MON IN MON WELL, DOWN 12",  
SET FOUR MAG NAILS AND TIES TO XC45R7 AS SHOWN ON SHEET 2.*

## SURVEYOR'S STATEMENT

This Corner Record was prepared by me or under my direction in conformance with

the Professional Land Surveyors' Act on JULY 30, 2017

Signed [Signature] P.L.S. or R.C.E. No. LS 5837



## COUNTY SURVEYOR'S STATEMENT

This Corner Record was received September 20, 2017

and examined and filed 15 MARCH 2018

Signed [Signature] P.L.S. or R.C.E. No. 6843

Title COUNTY SURVEYOR

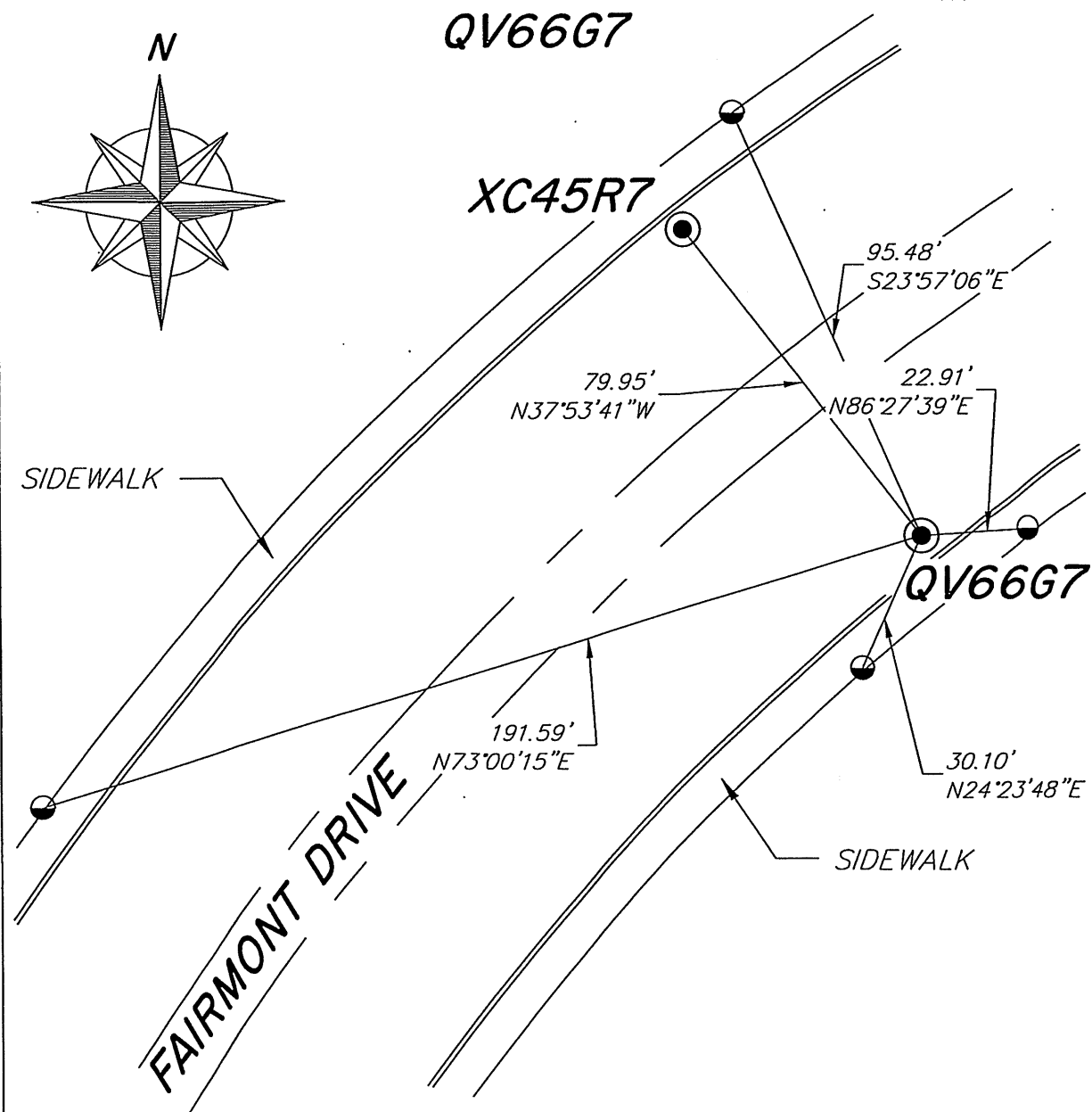
County Surveyor's Comment

*REVISED (26/02/2018)*



*SPEC 2279*

NO SCALE



### LEGEND

● FOUND ACBCM IN MON WELL

● SET MAG NAIL UNLESS  
OTHERWISE SHOWN

ACBCM ALAMEDA COUNTY  
BRASS CAP MONUMENT

AA##A# ALAMEDA COUNTY MONUMENT ID

NOTE THAT BEARINGS ARE  
APPROXIMATE AND ARE TO  
BE USED FOR ANGLE  
CALCULATIONS ONLY.