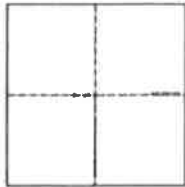


# CORNER RECORD

Agency Index BK 146 PG 6  
Document Number CR 15614

City of FREMONT County of ALAMEDA, California  
Brief Legal Description #16 (FARWELL DRIVE AND SABIN AVENUE INTERSECTION)



## CORNER TYPE

Government Corner ☐ Control ☐  
Meander ☐ Property ☐  
Rancho ☐ Other ☒

Date of Survey 07/26/2021

## COORDINATES (Optional)

N.                      E.                     

Elevation                     

Units Metric ☐ U.S. Survey Foot ☒

Horizontal Datum                     

Zone                      Epoch Date                     

Vertical Datum                     

☐ Complies with Public Resources Code §§8801-8819

☐ Complies with Public Resources Code §§8890-8902

PLS Act Ref.: ☐ 8765(d) ☐ 8771 ☐ 8773 ☒ Other:                     

Corner/Monument: ☐ Left as found ☐ Established ☐ Rebuilt ☒ Pre-Construction  
☐ Found and tagged ☐ Reestablished ☐ Referenced ☐ Post-Construction

Narrative of corner identified and monument as found, set, reset, replaced, or removed:

☒ See sheet #2 for description(s):

SEARCHED FOR MONUMENT IN MONUMENT WELL AT FARWELL  
DRIVE AND SABIN AVENUE INTERSECTION, AND FOUND  
NOTHING INSIDE AS SHOWN ON SHEET 2.

## SURVEYOR'S STATEMENT

This Corner Record was prepared by me or under my direction in conformance with  
the Professional Land Surveyors' Act of FEBRUARY 16, 2022

Signed James N. Landrum P.L.S. or R.C.E. No. LS 5837

## COUNTY SURVEYOR'S STATEMENT

This Corner Record was received                       
and examined and filed                     

Signed                      P.L.S. or R.C.E. No. 7010

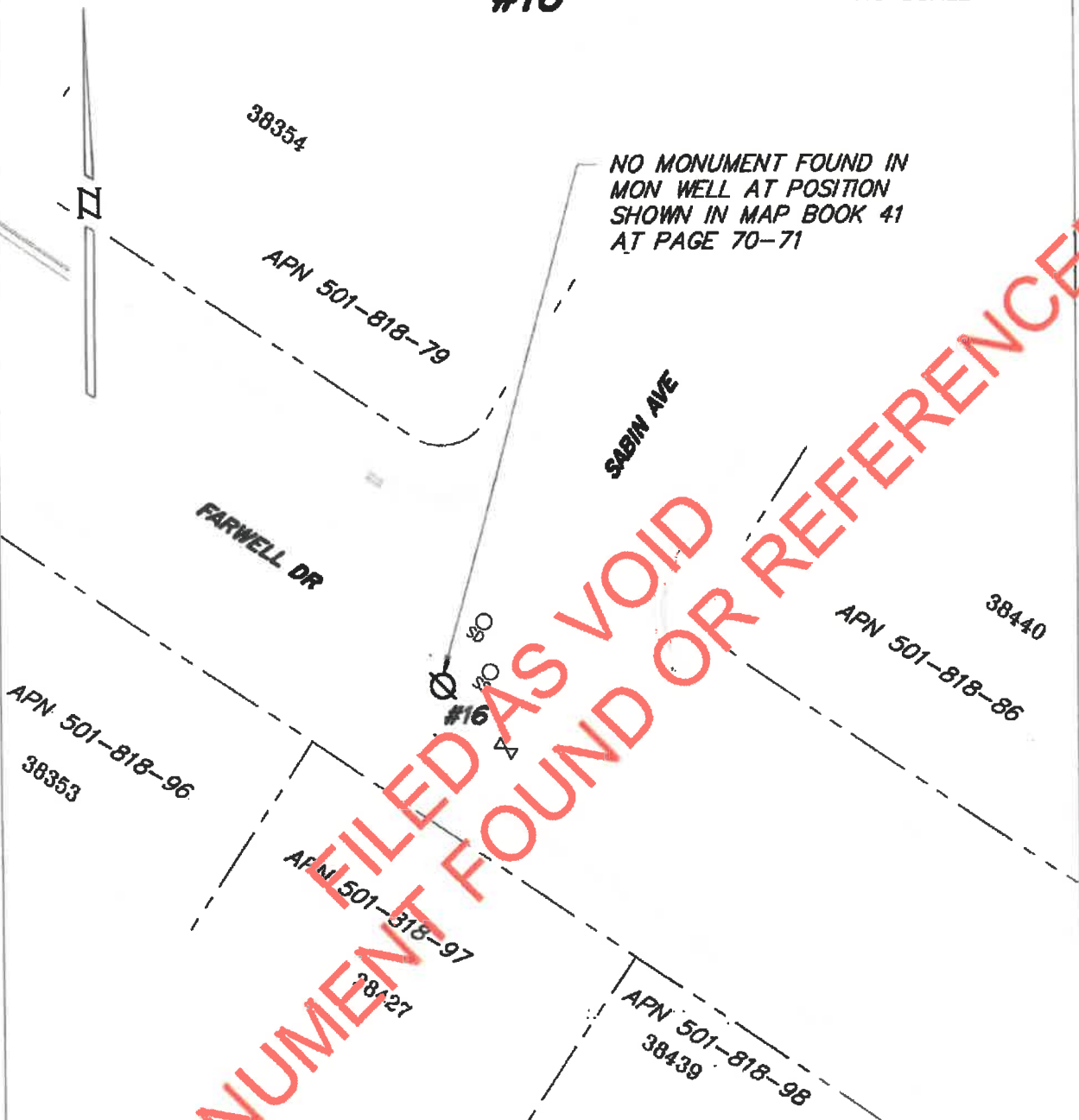
Title ALAMEDA COUNTY SURVEYOR

County Surveyor's Comment                     



#16

NO SCALE

**LEGEND**

SEARCH NOT FOUND

**NOTES**

- NOTE THAT BEARINGS SHOWN ARE FOR ANGULAR CONTROL FROM LOCAL CONSTRUCTION SURVEY DATA.