

CORNER RECORD

Agency Index

BK 105 PG 46

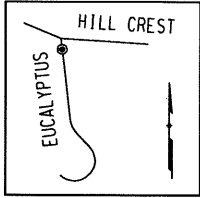
Document Number

CR 10951

City of BERKELEYCounty of ALAMEDA, California

Brief Legal Description

CITY OF BERKELEY (C.O.B.) MONUMENT B1899 AS SHOWN UPON RECORD OF SURVEY No. 2781 (43-ROS-27) EASTERLY OF 1 EUCALYPTUS ROAD.

**CORNER TYPE**

Government Corner ☐ Control
Meander ☐ Property
Rancho ☐ Other

COORDINATES (Optional)N. 2137635.9 ± E. 6057522.5 ±☒ ElevationUnits Metric ☐ U.S. Survey Foot ☒Horizontal Datum CCS 83Zone 3 Epoch Date

Vertical Datum

Date of Survey 1/11/2018☐ Complies with Public Resources Code §§8801-8819☐ Complies with Public Resources Code §§8890-8902PLS Act Ref: ☐ 8765(d)☒ 8771☐ 8773☐ Other:Corner/
Monument: ☒ Left as found☐ Established☐ Rebuilt☒ Pre-Construction☐ Found and tagged ☐ Reestablished☒ Referenced☐ Post-Construction

Narrative of corner identified and monument as found, set, reset, replaced, or removed:

☒ See sheet #2 for description (s):

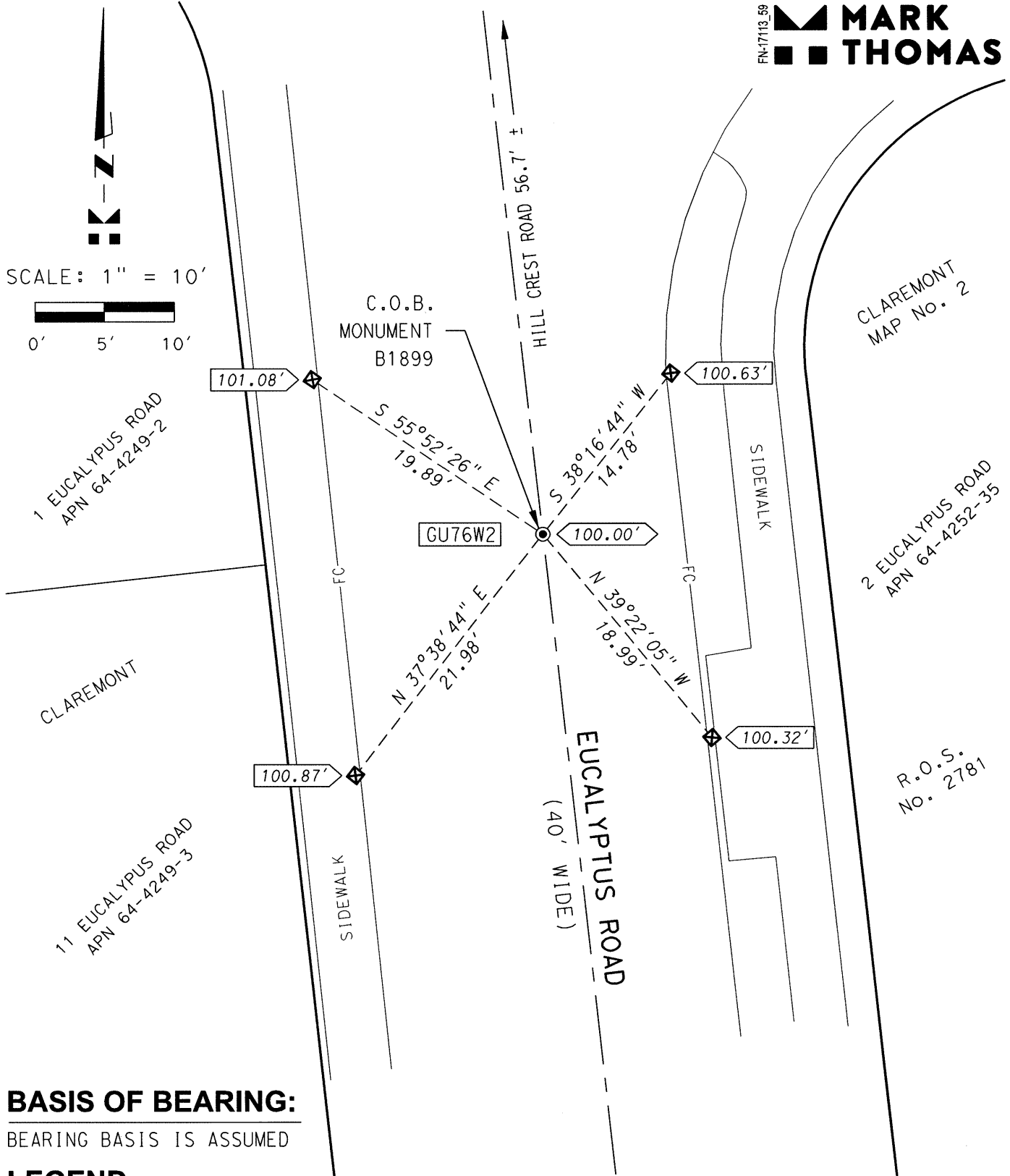
FOUND MONUMENT THAT COULD BE DAMAGED OR DESTROYED BY A PROPOSED GAS LINE CONSTRUCTION PROJECT. MONUMENT WAS REFERENCED AS SHOWN ON PAGE 2 OF 2.

THE PURPOSE OF THIS CORNER RECORD IS TO PRESERVE THE LOCATION OF THE MONUMENT PRIOR TO CONSTRUCTION. NO ATTEMPT WAS MADE TO DETERMINE THE RELATIONSHIP BETWEEN THE MONUMENT AND PROPERTY LINES, RIGHT-OF-WAY LINES, CENTERLINES OR OTHER MONUMENTS.

SURVEYOR'S STATEMENTThis Corner Record was prepared by me or under my direction in conformance with the Professional Land Surveyors' Act on FEBRUARY 20, 2018Signed Erik Paul Kiel P.L.S. or R.C.E. No. 8911**COUNTY SURVEYOR'S STATEMENT**This Corner Record was received 17 JANUARY 2018and examined and filed 6 MARCH 2018Signed Michael Rubner P.L.S. or R.C.E. No. 6843Title COUNTY SURVEYOR

County Surveyor's Comment

FN-1713.59
MARK THOMAS

**BASIS OF BEARING:**

BEARING BASIS IS ASSUMED

LEGEND:

- FOUND 2" BRASS DISK STAMPED CITY OF BERKELEY UNLAWFUL TO DEFACE IN WELL
- ⊠ SET CUT CROSS FOR REFERENCE POINT IN TOP OF CONCRETE CURB
- 100.00' MONUMENT ELEVATION (ASSUMED)
- xxx.xx' REFERENCE POINT ELEVATION (ESTABLISHED USING A DIGITAL LEVEL)
- GU76W2 ALAMEDA COUNTY MONUMENT IDENTIFICATION NUMBER