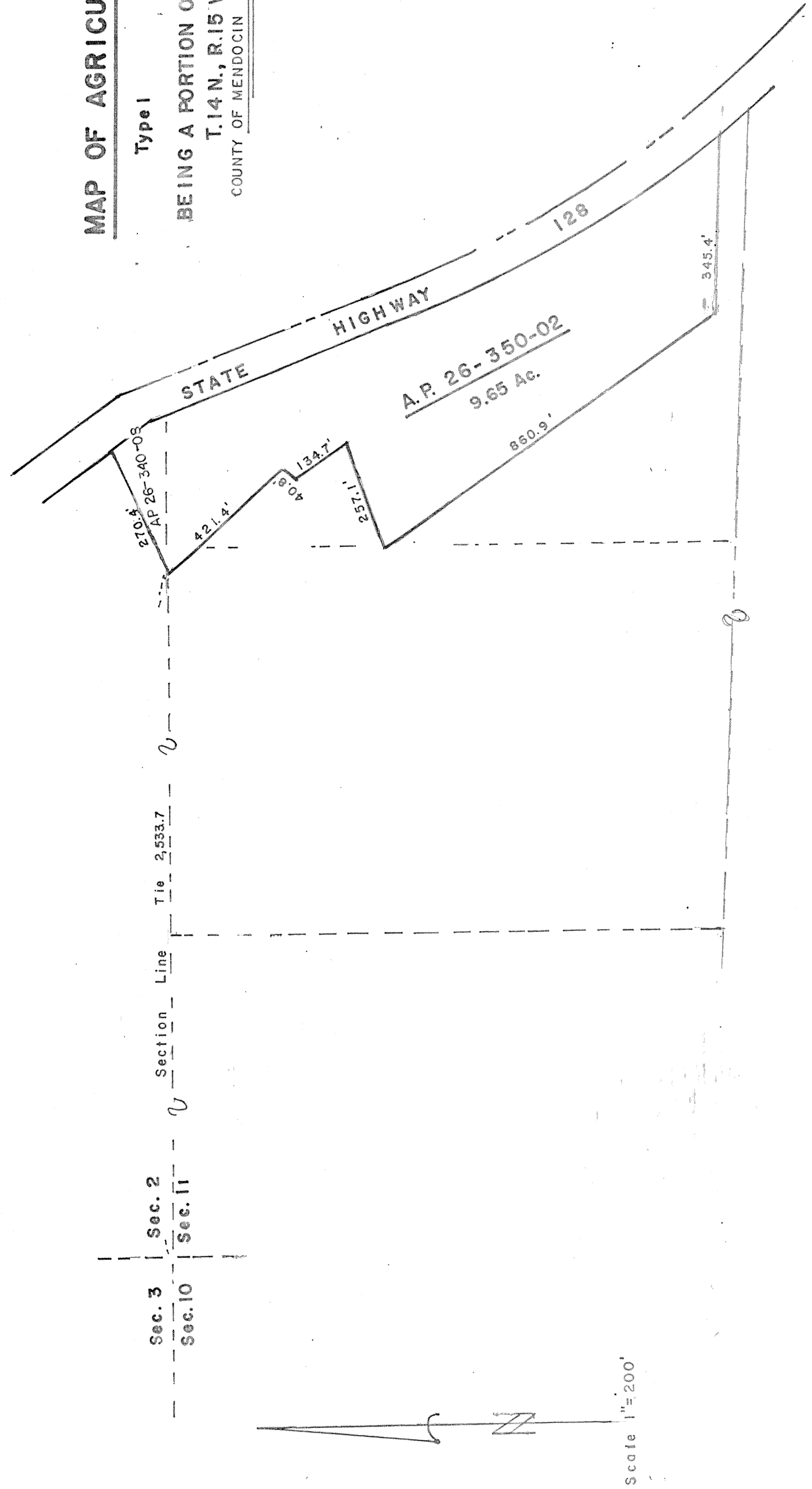


MAP OF AGRICULTURAL PRESERVE

Type 1 No. 946  
BEING A PORTION OF SECTIONS 2 AND 11  
T.14N., R.15W., M.D. B. & M.  
COUNTY OF MENDOCINO STATE OF CALIFORNIA



OWNER'S STATEMENT  
This Type I Agricultural Preserve has been adopted by the  
Board of Supervisors on March 28, 2000 by Resolution No.00-055.

Owner: Larry Pardini  
Larry Pardini

RECORDER'S STATEMENT  
Filed this 4 day of MAY 2000 at  
9:23 a.m. in Map Case ---, Drawer 67, Page  
42, at the of Larry Pardini.

MARSHA YOUNG WHARFF  
County Recorder

By: Marsha Young Wharff Deputy

Fee 8.25

# 31

SHEET 1 OF 1  
MAP CASE ---  
DRAWER 67  
PAGE 42