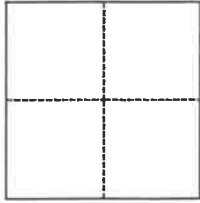


# CORNER RECORD

Agency Index BK 147 PG 75Document Number CR 16053City of UNINCORPORATED (SAN LORENZO) County of ALAMEDA, CaliforniaBrief Legal Description INTERSECTION PASEO GRANDE & VIA PRIMERO**CORNER TYPE****COORDINATES (Optional)**

- ☐ Government Corner ☐ Control  
☐ Meander ☐ Property  
☐ Rancho ☒ Other

Date of Survey February 17, 2022

N. \_\_\_\_\_ E. \_\_\_\_\_

Elevation \_\_\_\_\_

Units ☐ Metric ☒ U.S. Survey Foot

Horizontal Datum \_\_\_\_\_

Zone \_\_\_\_\_ Epoch Date \_\_\_\_\_

Vertical Datum \_\_\_\_\_

☐ Complies with Public Resources Code §§8801-8819☐ Complies with Public Resources Code §§8890-8902PLS Act Ref.: ☐ 8765(d) ☒ 8771 ☐ 8773 ☐ Other:

Corner/  
Monument: ☒ Left as found ☐ Established ☐ Rebuilt ☒ Pre-Construction  
☐ Found and tagged ☐ Reestablished ☒ Referenced ☐ Post-Construction

Narrative of corner identified and monument as found, set, reset, replaced, or removed:

☐ See sheet #2 for description(s):

FOUND MONUMENT PER TR 688 (10 M 43) AS SHOWN ON SIDE 2. SET MAG NAILS & TAGS  
STAMPED "ALAMEDA COUNTY SURVEYOR" IN TOP OF CURB, UNLESS OTHERWISE NOTED,  
AS STRADDLERS FOR FOUND MONUMENT. NO PREVIOUS 8771(b) CORNER RECORD ON FILE.

**SURVEYOR'S STATEMENT**

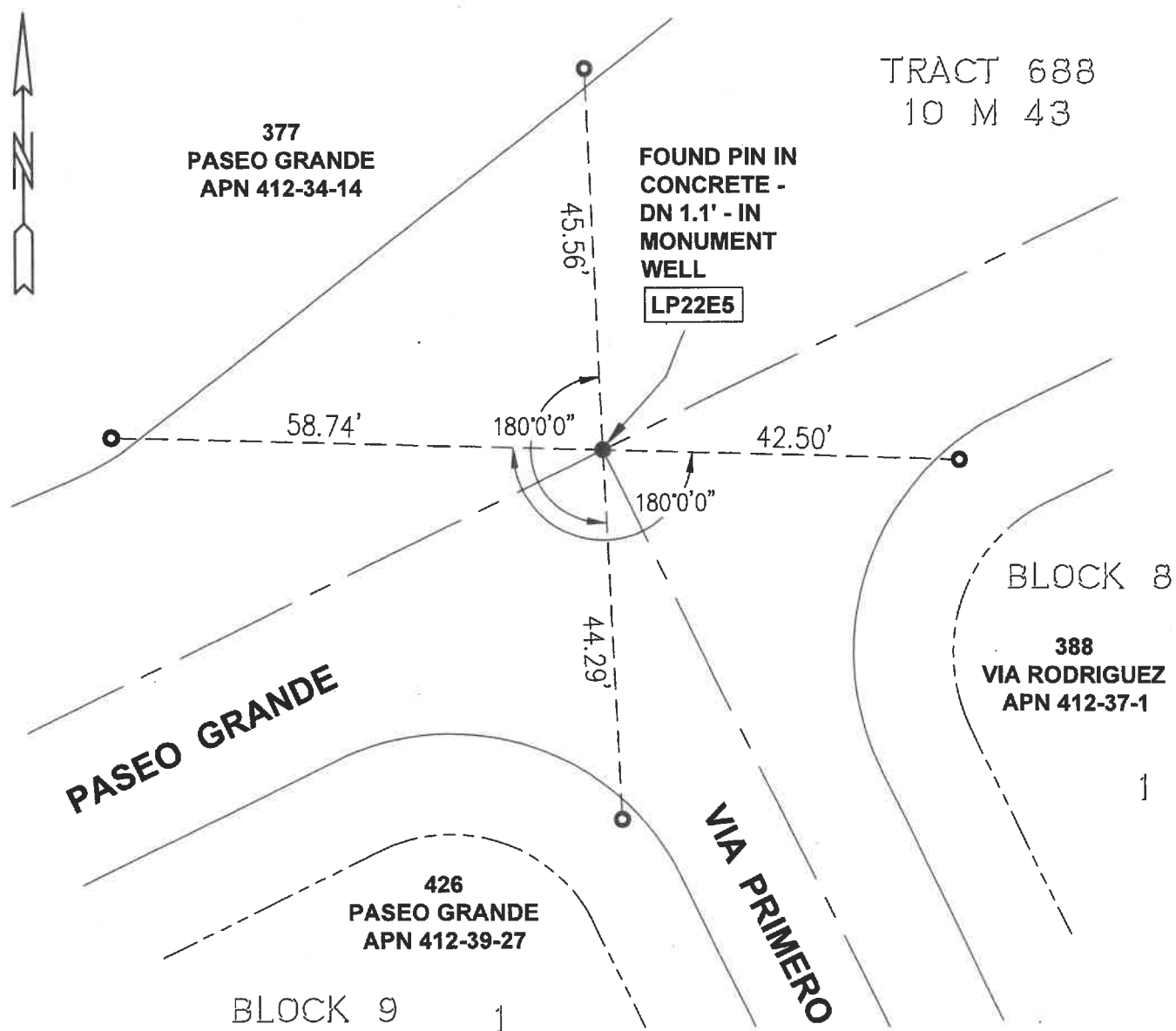
This Corner Record was prepared by me or under my direction in conformance with

the Professional Land Surveyors' Act on April 14, 2022Signed [Signature] (P.L.S.) or R.C.E. No. 8427**COUNTY SURVEYOR'S STATEMENT**

This Corner Record was received \_\_\_\_\_

and examined and filed \_\_\_\_\_

Signed D. Ian Wilson (P.L.S.) or R.C.E. No. 7010Title ALAMEDA COUNTY SURVEYOR**County Surveyor's Comment**



## LEGEND

○	SET BRASS NAIL AND TAG "ALA CO SURV" IN LEAD IN TOP OF CURB
#####	STREET ADDRESS
—————	CURB LINE
— — — — —	CENTER LINE
—————	PROPERTY LINE
APN	ASSESSOR'S PARCEL NUMBER

