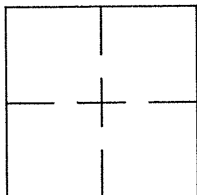


CORNER RECORD

Document Number CR 6457City of OAKLANDCounty of ALAMEDA, CaliforniaBrief Legal Description WELL MONUMENT LOCATED WITHIN WEBSTER ST AND 13TH STREET.

CORNER RECORD

Government Corner ☐Meander ☐Rancho ☐Date of Survey 08/14/2014Control ☒Property ☐Other ☐COORDINATES
(Optional)

N. _____

E. _____

Zone _____ Datum _____

Elev. _____

Corner — Left as found ☒ Found and tagged ☐ Established ☐ Reestablished ☐ Rebuilt ☐

Identification and type of corner found: Evidence used to identify or procedure used to establish or reestablish the corner:
FOUND BRASS DISC IN WELL MONUMENT INTERSECTION OF WEBSTER ST AND 13TH ST.

AS SHOWN ON CITY OF OAKLAND MONUMENT MAP, PAGE 203

NO CITY MONUMENT DESIGNATION NUMBER AT SUBJECT LOCATION.

THIS POINT WAS REFERENCED PRIOR TO A CONSTRUCTION PROJECT IN THE VICINITY.

A description of the physical condition of the monument as found and as set or reset: _____

FOUND AND SET POINTS AS SHOWN ON PAGE 2.

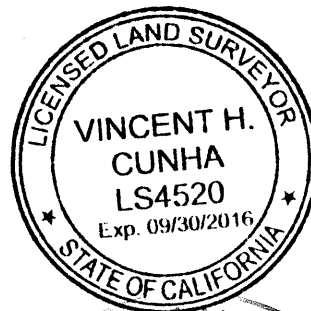
THESE TIES ARE FOR THE PURPOSE OF PERPETUATING THE FOUND MONUMENTATION.

NO CLAIM IS MADE AS TO THE RELATIONSHIP OF THE POINTS OR LINES SHOWN HEREON
 TO TRUE BOUNDARY LOCATIONS.

SURVEYOR'S STATEMENT

This Corner Record was prepared by me or under my direction in conformance with
 the Land Surveyors' Act on AUGUST 29, 2014.

Signed Vincent H. Cunha L.S. Number LS 4520
VINCENT H. CUNHA

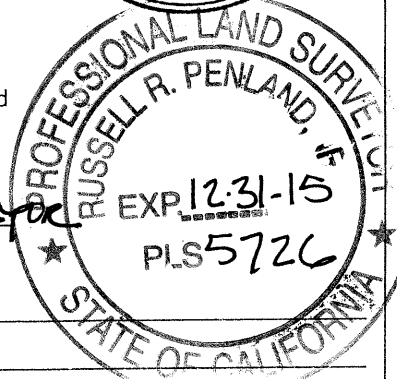


COUNTY SURVEYOR'S STATEMENT

This Corner Record was received 8-28-14 and examined

and filed 10-6-14

Signed [Signature] Title County Surveyor



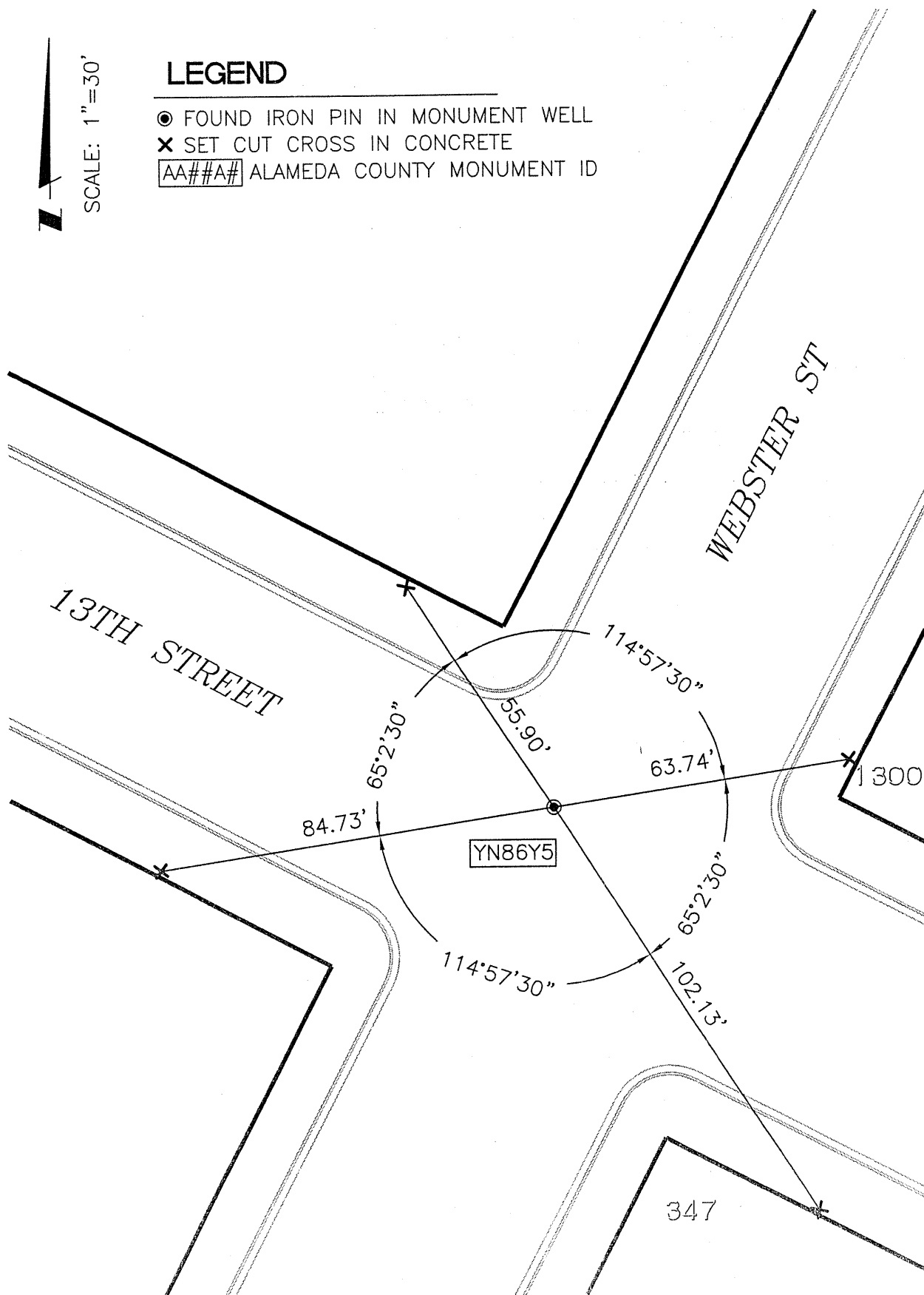
County Surveyor's Comment _____



SCALE: 1"=30'

LEGEND

- FOUND IRON PIN IN MONUMENT WELL
- ✕ SET CUT CROSS IN CONCRETE
- AA##A# ALAMEDA COUNTY MONUMENT ID



214072-WEBSTER-CR6