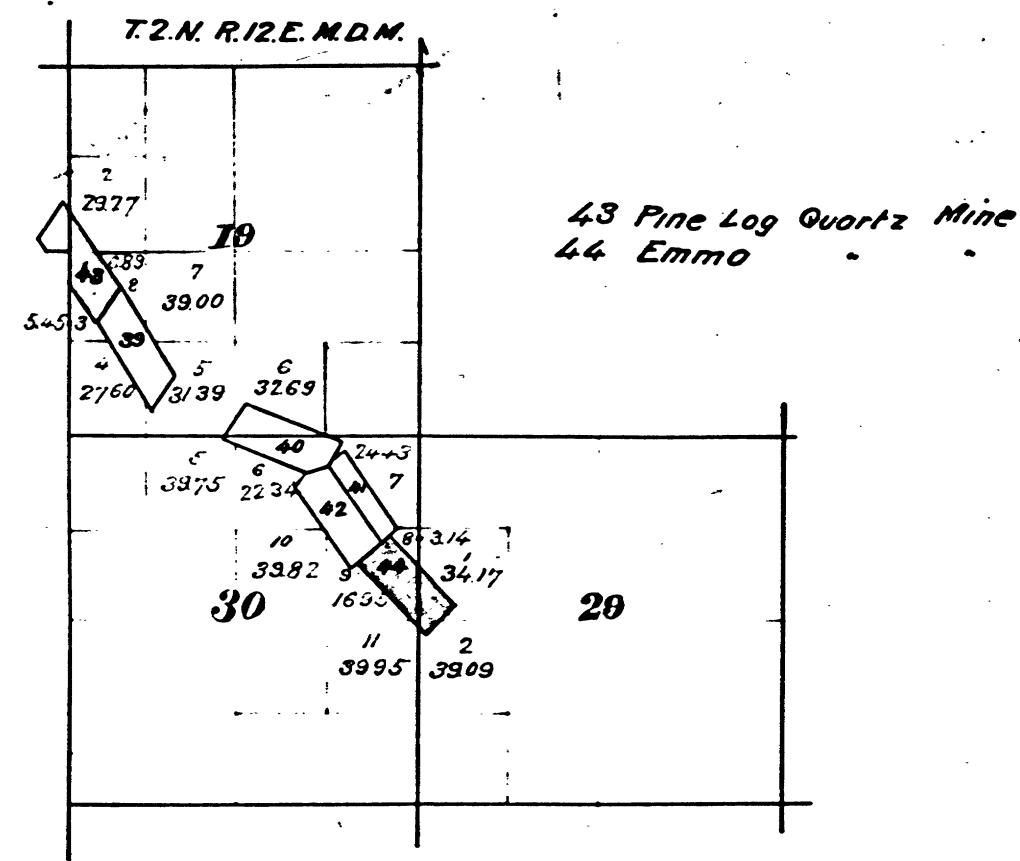


Township N° 2 North.

Range N° 12 East,

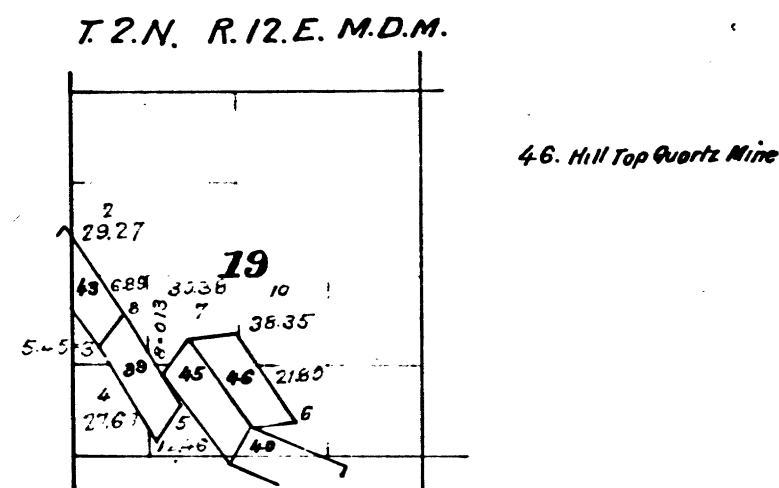
Mount Diablo Meridian.

T.A.B.
1892



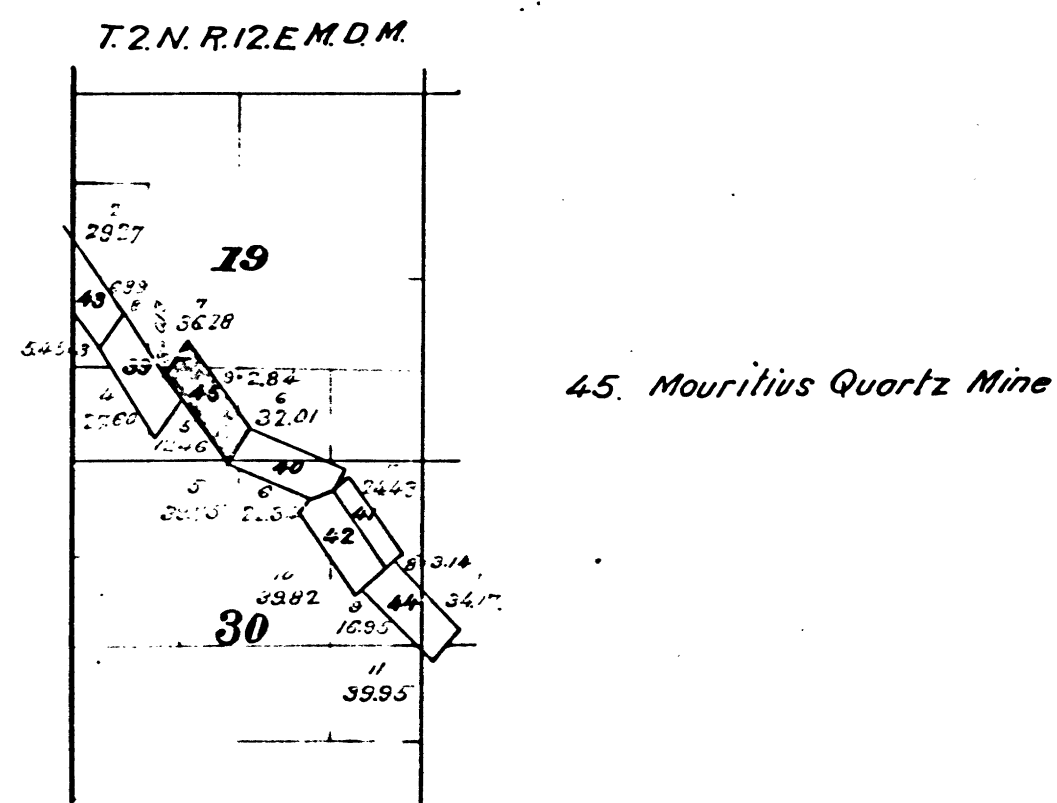
The above diagram of Sections N°s 19, 30 & 29, Township, N° 2 North, Range N° 12 East, Mount Diablo Meridian, is correctly copied from the original map as amended and on file in this office.
U.S. Surveyor General's Office
San Francisco California
November 16th 1889.

W. B. Hammond Jr.
U.S. Surv. Gen. Cal.



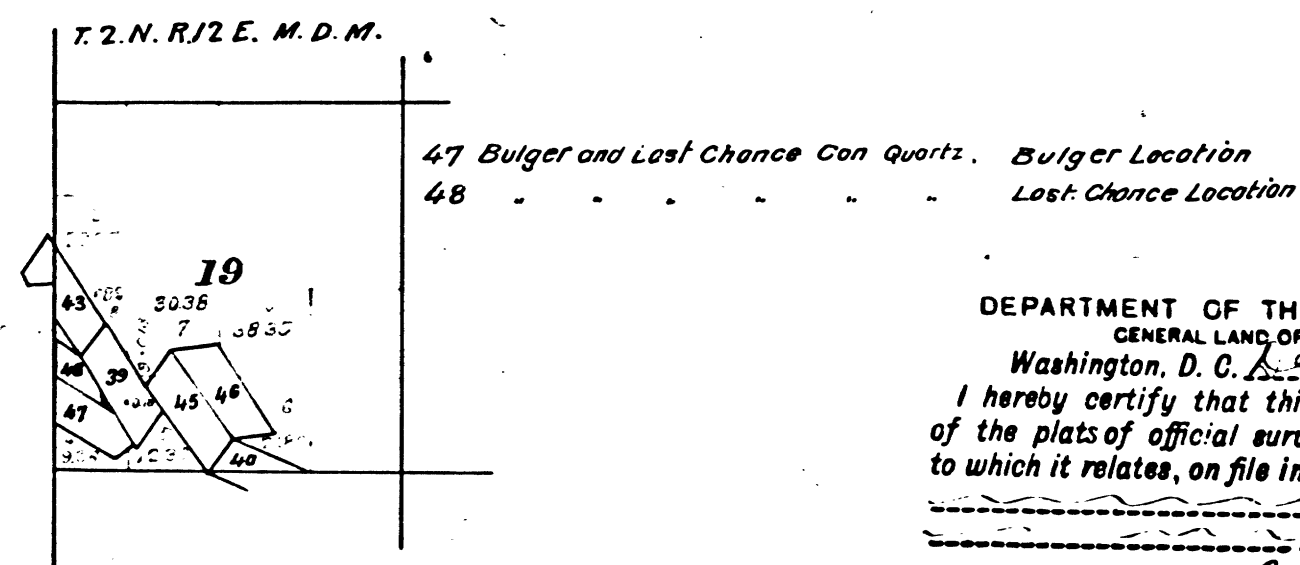
The above diagram of Section 19, Township 2 North, Range 12 East, Mount Diablo Meridian is correctly copied from the original map as amended and on file in this Office.
U.S. Surveyor General's Office.
San Francisco California
January 26th 1892

Wm. B. Hammond
U.S. Surv. Genl. Cal.



The above diagram of Sections 19 & 30, Township N° 2 North, Range N° 12 East, Mount Diablo Meridian is correctly copied from the original map as amended and on file in this office.
U.S. Surveyor General's Office.
San Francisco California
December 10th 1889.

W. B. Hammond Jr.
U.S. Surv. Gen. Cal.



The above diagram of Sec 19 Township 2 North, Range 12, East, Mount Diablo Meridian, is correctly copied from the original map as amended and on file in this office.
U.S. Surveyor General's office
San Francisco California
May 16th 1893.

Wm. B. Hammond
U.S. Surv. Genl. Cal.

DEPARTMENT OF THE INTERIOR,
GENERAL LAND OFFICE,
Washington, D. C. *1892*
I hereby certify that this is a true copy
of the plat of official survey of the lands
to which it relates, on file in this office.

Wm. B. Hammond
Recorder, General Land Office.

CHAINS

CHAINS
10 20 40 60 80 120

41 111

T 2 N R 12 E M D

BLM 27