

ROOFTOP UNIT SCHEDULE																		
MARK	MANUFACTURER & MODEL NO.	AREA SERVED	NOM. TONS	CFM	CFM O/A	HEATING (MBH)		COOLING CAP. (MBH)		E.S.P. "in.WC"	EER	FAN HP	UNIT WT. LBS.	ELECTRICAL				ACCESORIES
						TYPE	INPUT OUTPUT	GROSS CAPACITY	NET CAPACITY					VOLTS	PH.	MCA	MOCP	
RTU1	LENNOX LGH060H4E	SEATING	5	1750	500	GAS	65 52	61.6	60	0.5	12.7	1	750	208	3	33	45	ALL
RTU2	LENNOX LGH092H4B	SEATING/KITCHEN/ RESTROOMS	7.5	3000	800	GAS	130.0 104.0	93	90	1.0"	12.5	3.0	1500	208	3	45	60	ALL
RTU3	LENNOX LGH048H4E	KITCHEN	4	1600	300	GAS	65 52	50.1	49	1.0	12.8	0.75	650	208	3	28	40	ALL
GENERAL NOTES: 1. HAILGUARD 2. 14" ROOF CURB 3. FACTORY PROVIDED DISCONNECT 4. FACTORY PROVIDED ENTHALPY ECONOMIZER WITH POWERED EXHAUST 5. RETURN AIR SMOKE DETECTOR FOR UNITS 5-TON OR MORE																		

GRILLES, REGISTERS, AND DIFFUSERS SCHEDULE									
UNIT DATA				PERFORMANCE DATA					
TAG	FUNCTION	MODEL	FACE SIZE	FRAME TYPE	MATERIAL	FINISH	BALANCE DAMPER	MAX N.C.	COMMENTS
D1	SUPPLY	TMS	24"x24"	LAY-IN	STEEL	BAIGE	—	25	
D2	SUPPLY	TMS	24"x24"	LAY-IN	STEEL	WHITE	—	25	
G1	RETURN	350RL	12"x12"	LAY-IN	STEEL	BEIGE	—	25	
G2	RETURN	50F	24"x24"	LAY-IN	STEEL	WHITE	—	25	
G3	RETURN	50F	24"x24"	LAY-IN	STEEL	BEIGE	—	25	

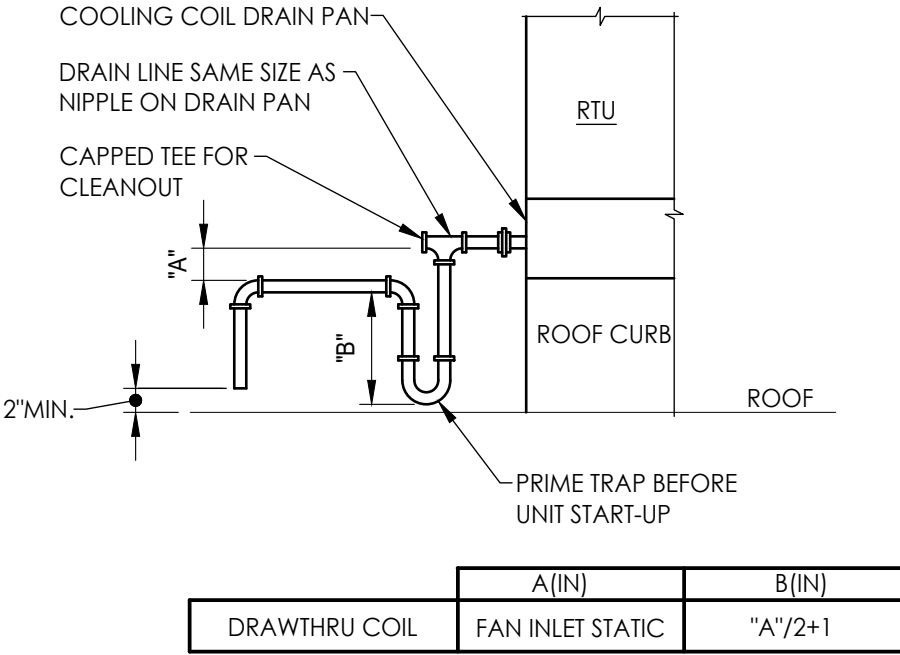
KITCHEN HOOD SCHEDULE												
THIS EQUIPMENT HAS BEEN SELECTED AND APPROVED BY CAPTIVEAIRE. ALL INFORMATION PERTINENT TO THESE UNITS SHALL BE THE SOLE RESPONSIBILITY OF CAPTIVEAIRE.												
BASED ON CAPTIVEAIRE U.N.O												
UNIT DATA				LIGHTS				MISC.				
TAG	MODEL	HOOD LENGTH	MAX. COOKING TEMP.	TOTAL EXHAUST CFM	RISER (W" x L")	S.P. (IN" W.G.)	QTY.	TYPE	FIRE SUPP. SYSTEM	HANGING WEIGHT (LBS.)	COMMENTS	
KH-1	5424-ND-2	5'-0"	450°F	1200	10x11	-0.31	2	INCAND.	YES	450		

EXHAUST FAN SCHEDULE													
THIS EQUIPMENT HAS BEEN SELECTED AND APPROVED BY CAPTIVEAIRE. ALL INFORMATION PERTINENT TO THESE UNITS SHALL BE THE SOLE RESPONSIBILITY OF CAPTIVEAIRE.													
BASED ON CAPTIVEAIRE U.N.O													
UNIT DATA				PERFORMANCE DATA					MOTOR DATA				
TAG	MODEL	FUNCTION	FAN TYPE	CFM	ESP	RPM	DAMPER	BELT OR DIRECT	HP	VOLT	PH	COMM ENTS	
EF-1	DU50HFA	KH-1 HOOD EXHAUST	ROOF MOUNTED UP BLAST	1200	0.75	1429	-	BELT	1/2	120	1	1,2	
EF-2	DR10HFA	RESTROOM EXHAUST	ROOF MOUNTED DOWN BLAST	350	0.25	1124	-	BELT	FRACT.	120	1	1,2	

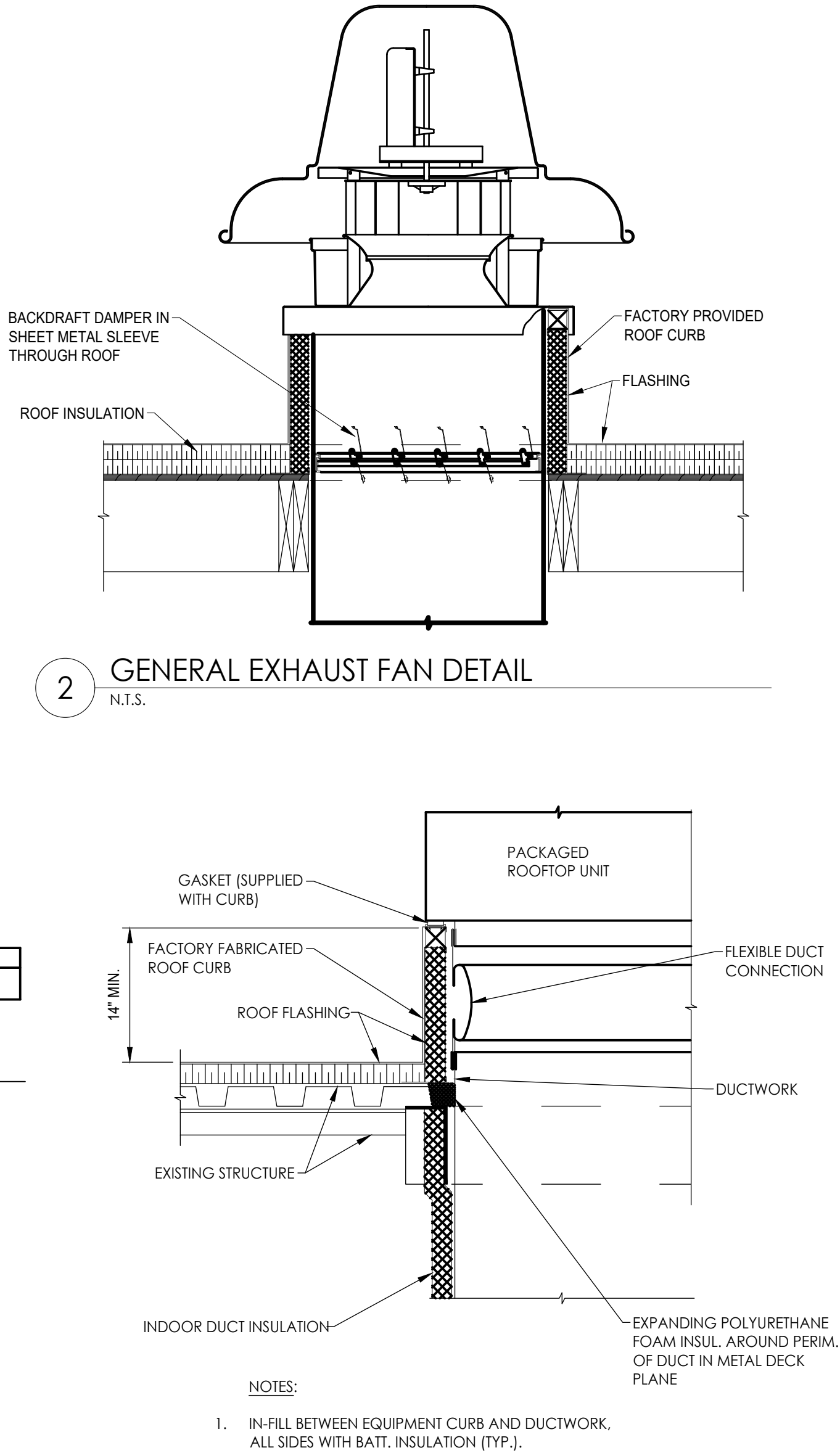
NOTES:
1. FACTORY PROVIDED DISCONNECT SWITCH
2. REFER TO CAPTIVEAIRE DRAWINGS FOR ROOF CURB

VENTILATION SCHEDULE													
SPACE DATA				PEOPLE VENTILATION			AREA VENTILATION			TOTAL			
SPACE NAME	ROOM NUMBER	CATEGORY	RTU SERVED BY	OCC.	CFM PER PERSON	CFM TOTAL (PEOPLE)	AREA (SF)	CFM REQUIRED PER SF	CFM TOTAL (AREA)	TOTAL VENTILATION	ROOFTOP UNIT VENTILATION SUMMATION		
DINING	102	FOOD & BEVERAGE/DINING	RTU-1	40	7.5	300	1000	0.18	180	480			
VESTIBULE (S)	100	CORRIDORS	RTU-2	—	—	0	38	0.18	7	7			
VESTIBULE (N)	101	CORRIDORS	RTU-2	—	—	0	50	0.18	9	9			
WOMENS	103	RESTROOMS	RTU-2	—	—	—	—	—	—	—			
MENS	104	RESTROOMS	RTU-2	—	—	—	—	—	—	—			
UNLISTED ROOMS ARE LUMPED INTO LISTED ROOMS										496	0.8	620	800
VENTILATION SCHEDULE													
SPACE DATA				PEOPLE VENTILATION			AREA VENTILATION			TOTAL			
SPACE NAME	ROOM NUMBER	CATEGORY	RTU SERVED BY	OCC.	CFM PER PERSON	CFM TOTAL (PEOPLE)	AREA (SF)	CFM REQUIRED PER SF	CFM TOTAL (AREA)	TOTAL VENTILATION	ROOFTOP UNIT VENTILATION SUMMATION		
SERVICE AREA	104	FOOD & BEVERAGE/KITCHEN	RTU-1	10	7.5	75	350	0.18	63	138			
KITCHEN	106	FOOD & BEVERAGE/KITCHEN	RTU-2 & RTU-3	2	7.5	15	500	0.18	90	90	SYSTEM EFFICIENCY	CORRECTED OA	OA PROVIDED
UNLISTED ROOMS ARE LUMPED INTO LISTED ROOMS										228	0.8	285	800

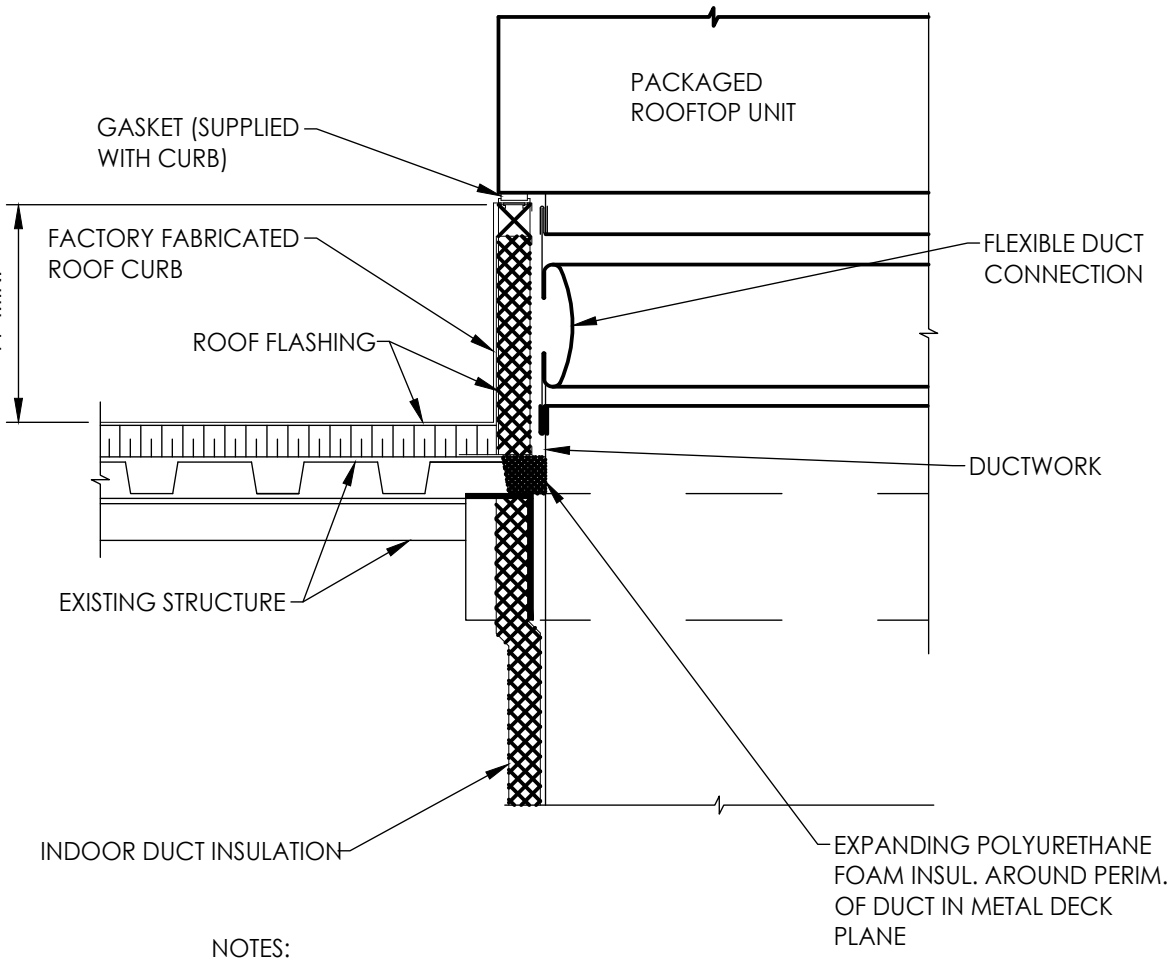
AIR BALANCE SCHEDULE						BUILDING PRESSURE
COMPONENT	SUPPLY CFM	RETURN CFM	SUPPLY AIR CFM TO HOOD	OUTDOOR AIR CFM	EXHAUST CFM	
RTU-1	1750	1250	—	500	—	
RTU-2	3000	2200	—	800	—	
RTU-3	1600	1300	—	300	—	
EF-1	—	—	—	—	1200	
EF-2	—	—	—	—	350	
TOTAL	6000	4400	0	1600	1550	+50 CFM



1 RTU CONDENSATE DRAIN DETAIL
N.T.S.

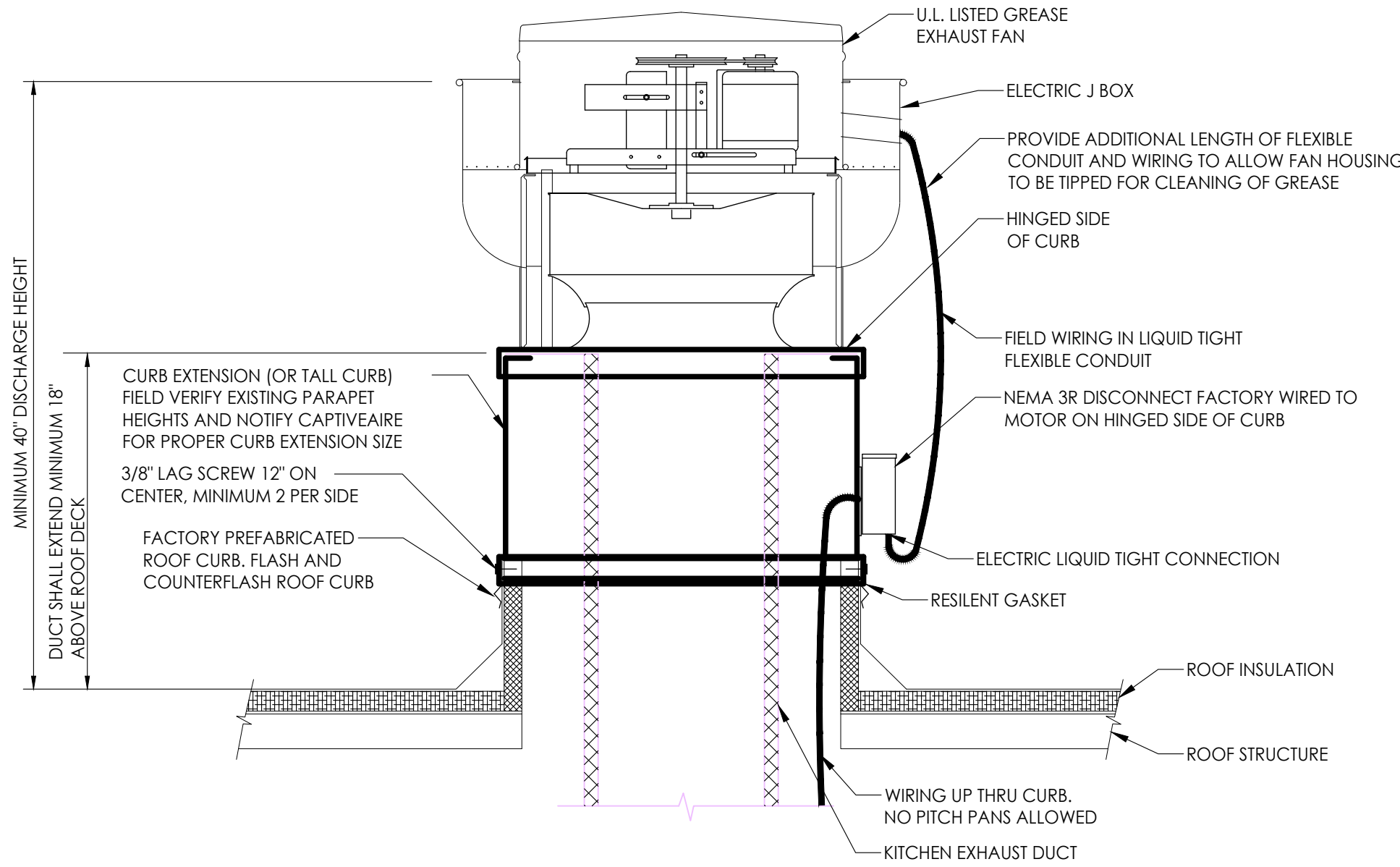


2 GENERAL EXHAUST FAN DETAIL
N.T.S.



NOTES:
1. IN-FILL BETWEEN EQUIPMENT CURB AND DUCTWORK, ALL SIDES WITH BATT. INSULATION (TYP.).

3 PACKAGED ROOFTOP UNIT DETAIL
N.T.S.



NOTES:
1. INSTALLATION SHALL BE IN ACCORDANCE WITH NFPA 96 REQUIREMENTS.
2. CUT AND PATCH EXISTING ROOFING AS REQUIRED FOR NEW CURB INSTALLATION.
3. CURB SHALL BE TAPERED TYPE AND MATCH THE PITCH OF THE ROOF.
4. CONTRACTOR TO PROVIDE TREATED WOOD BLOCKINGS AND SHIM FLAT ROOF CURB TILL LEVEL FOR ALL EXHAUST FANS AND TO ACHIEVE ROOF CURB HEIGHTS. PROVIDE ROOF CURB EXTENSION IF REQUIRED.

4 GREASE EXHAUST FAN DETAIL
N.T.S.

STATE OF ARIZONA
REGISTERED PROFESSIONAL ENGINEER
No. 9282
SCOTT WEBB
10-29-21

PROPRIETARY INFORMATION NOTICE:
THESE PROTOTYPICAL DOCUMENTS MAY REQUIRE REVISIONS TO CONFORM TO LOCAL, STATE, AND FEDERAL CODES, ORDINANCES OR OTHER CONDITIONS. THE DESIGN CONCEPTS EMBODIED IN THESE DOCUMENTS ARE SPECIFICALLY FOR THIS PROJECT. INFORMATION CONTAINED HEREIN REMAINS THE SOLE PROPERTY OF ARBY'S RESTAURANT GROUP, IS CONFIDENTIAL AND PROPRIETARY AND IS NOT TO BE COPIED, REPRODUCED, DISCLOSED OR OTHERWISE TRANSFERRED TO OTHER PARTIES IN ANY FORM WHATSOEVER WITHOUT THE EXPRESS WRITTEN CONSENT OF ARBY'S RESTAURANT GROUP.

Arby's™

Copyright 2020 by Arby's Restaurant Group

ARBY'S RESTAURANT GROUP
INSPIRE DUAL REGULAR 40 - STANDARD
1632 AR-25 BYPASS
HEBER SPRINGS, AR 72543
FOR
RB AMERICAN GROUP, LLC
6200 OAK TREE BLVD., SUITE 250, INDEPENDENCE, OHIO 44131

PROJECT NUMBER:

ISSUE	DATE
PRELIMINARY	
PERMIT	
BID	
REVISION	

SCHEDULES MECHANICAL
SHEET:
M5.1