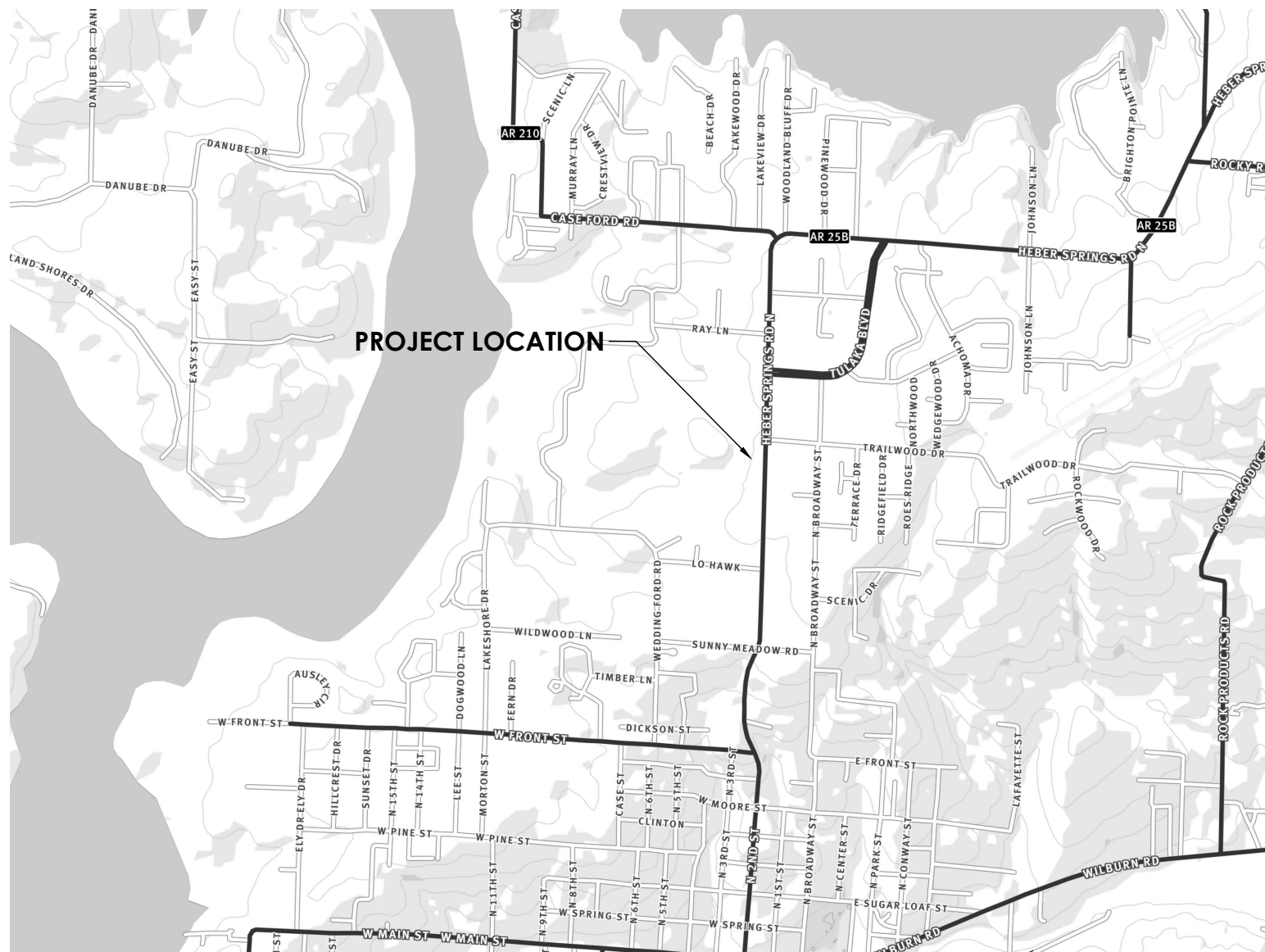


CIVIL CONSTRUCTION PLANS

FOR

ARBY'S | HEBER SPRINGS

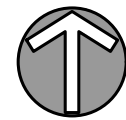
1632 Heber Springs Road
Heber Springs, AR 72543



VICINITY MAP

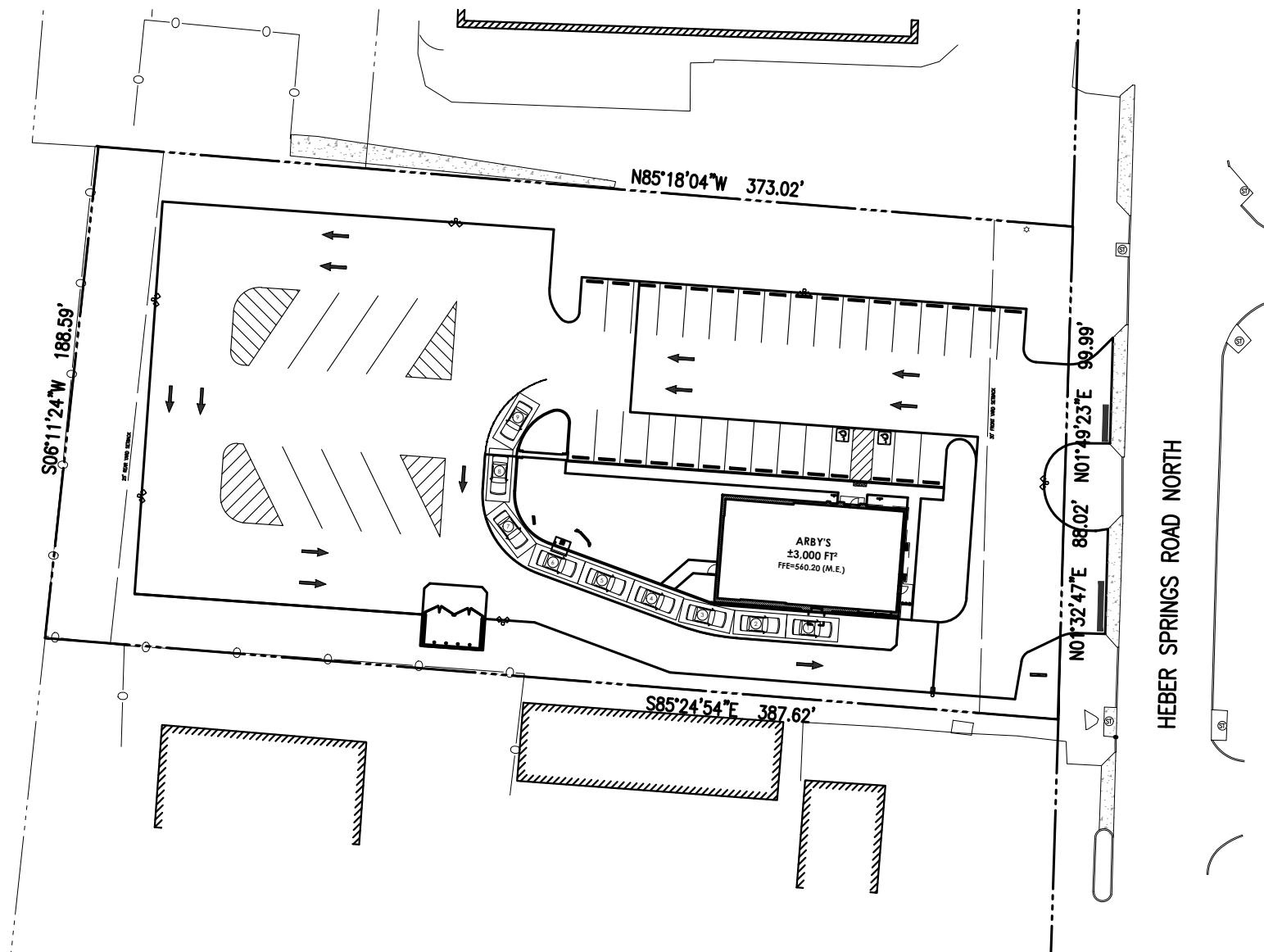
HEBER SPRINGS, ARKANSAS

1" = 2,000'



SHEET INDEX

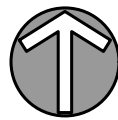
C-001	COVER SHEET
C-002	GENERAL NOTES
1 of 2	ALTA/NSPS LAND TITLE SURVEY
2 of 2	ALTA/NSPS LAND TITLE SURVEY
CD-101	DEMOLITION PLAN
CS-101	SITE PLAN
CS-501	SITE DETAILS
CS-502	SITE DETAILS
CG-101	GRADING PLAN
CG-501	GRADING DETAILS
CU-101	UTILITY PLAN
CU-501	UTILITY DETAILS
CE-101	STORMWATER POLLUTION PREVENTION PLAN
CE-501	STORMWATER POLLUTION PREVENTION DETAILS
LP-101	LANDSCAPE PLAN
LP-501	LANDSCAPE DETAILS



SITE MAP

HEBER SPRINGS, ARKANSAS

1" = 60'



REVISION BLOCK



Michael Thompson

DATE
10/22/2021

DRAWN BY
KPB

CHECKED BY
TLP

HAMILTON
DESIGNS

A LIMITED LIABILITY COMPANY

11 Municipal Drive, Suite 300
Fishers, Indiana 46038
P. (317) 570-8800
www.hamilton-designs.com

CONSTRUCTION PLANS FOR:

ARBY'S | HEBER SPRINGS

1632 Heber Springs Road
Heber Springs, Arkansas 72543

RB AMERICAN GROUP, LLC

6200 Oak Tree Blvd., Suite 250
Independence, Ohio 44131

PROJECT NO.
2021-0122

DATE
10/22/2021

SCALE

SHEET NAME
COVER SHEET

SHEET NO.

C-001

CONSULTANT TEAM

DEVELOPER/OWNER

RB AMERICAN GROUP, LLC
6200 OAK TREE BLVD
INDEPENDENCE, OHIO 44131
PH: (317) 507-3881

CONTACT: T. ROBERT LACH
EMAIL: blach@flynnrg.com

CIVIL ENGINEER

HAMILTON DESIGNS, LLC
11 MUNICIPAL DRIVE
SUITE 300
FISHERS, INDIANA 46038
PH: (317) 570-8800

CONTACT: MICHAEL THOMPSON, PE
EMAIL: mthompson@hamilton-designs.com

ARCHITECT

PLAN INVENTORY

STORM SEWER	
SIZE	LENGTH
12" RCP	46 LF
10" PVC	--- LF
6" HDPE	--- LF
PAVEMENT	
MATERIAL	AREA
CONCRETE	2,798 FT ²
ASPHALT	
STANDARD DUTY	3,358 FT ²
HEAVY DUTY	25,254 FT ²
MILL & RESURFACE	8,532 FT ² (ALTERNATE)
MILL, WEDGE, & RESURFACE	4,014 FT ² (ALTERNATE)
CURB	
TYPE	LENGTH
6" CURB	223 FT
CURB AND WALK	----- FT



Know what's below.
Call before you dig.