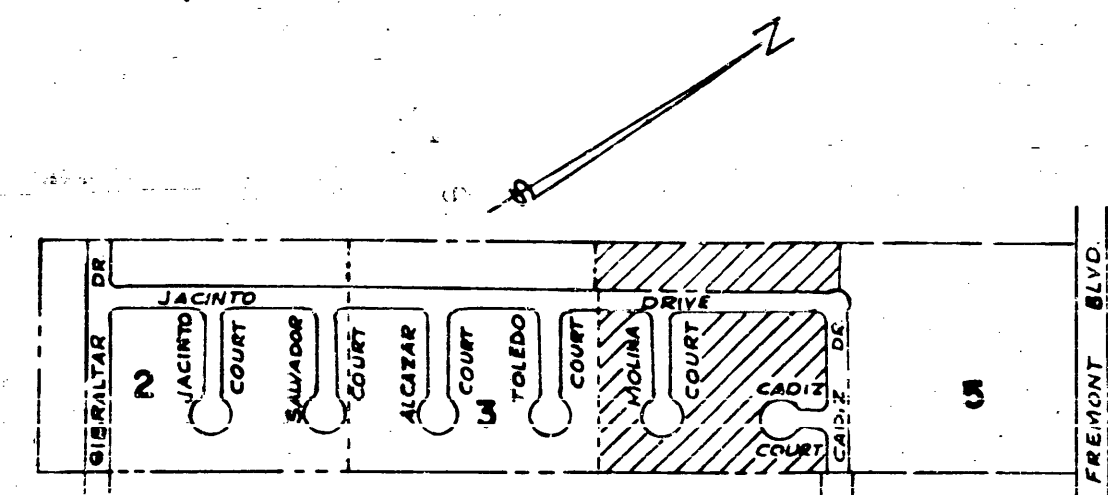
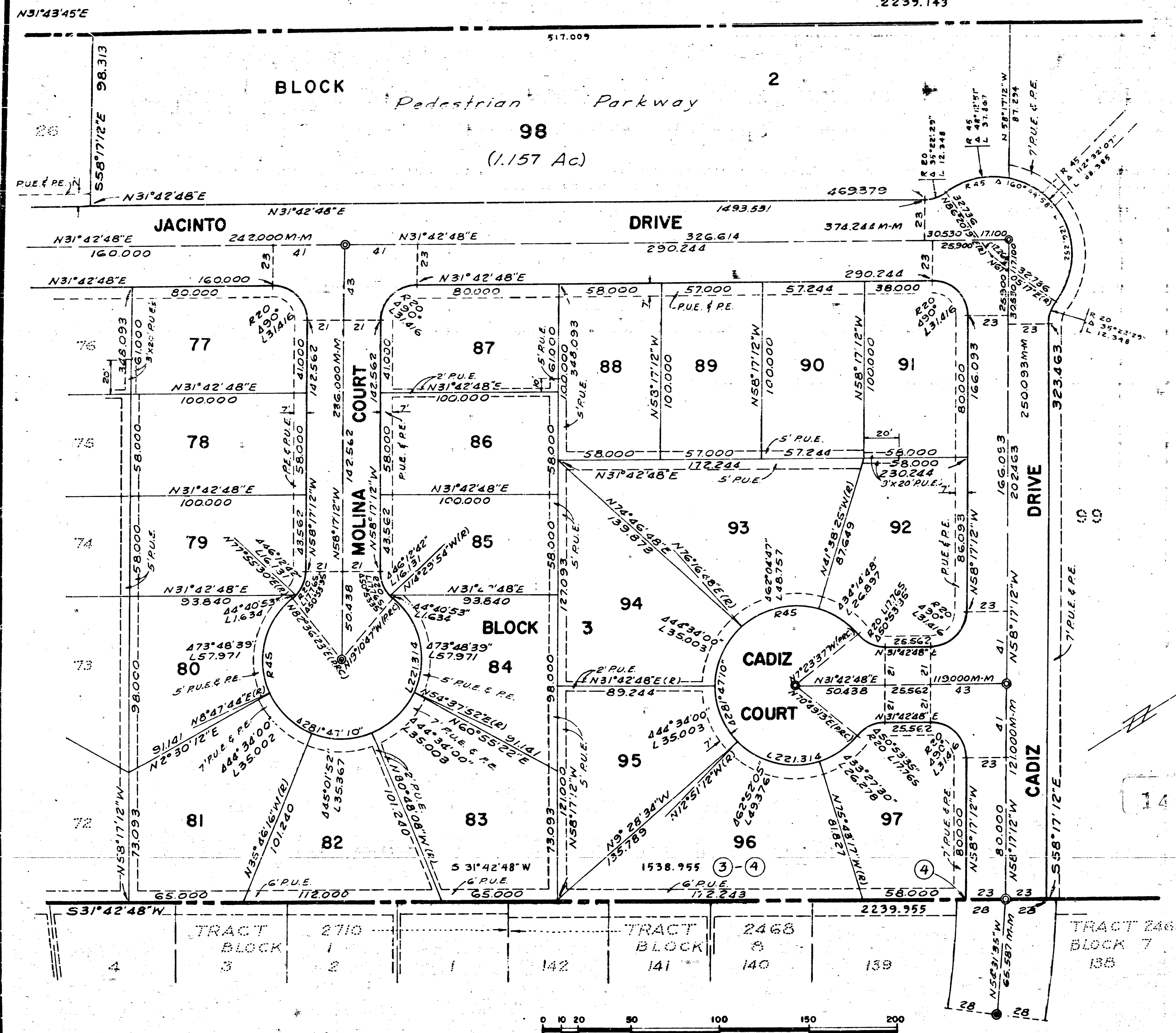


TITLE INSURANCE AND TRUST COMPANY



KEY MAP

LEGEND

- EXISTING MONUMENT
- CONCRETE MONUMENT WITH CAST IRON FRAME AND COVER, TO BE INSTALLED
- PUBLIC UTILITY EASEMENT - PUE
- PLANTING EASEMENT - P.E.

BASIS OF BEARINGS

TRACT 2468

BUILDING SET-BACK LINES

BUILDING SET-BACK LINES TO BE AS REQUIRED BY THE ZONING ORDINANCE OF THE CITY OF FREMONT AS MODIFIED BY P.U.D.-64-10 DATED 12-14-64.

This is a copy of a map on file in the Recorder's Office of Alameda County. No representation of any kind is made as to the accuracy of the original official map from which this is copied, and this copy carries with it no representation of any kind other than that it is a copy.

Any questions concerning this map should be directed to the Recorder's Office of Alameda County.
DIETRICH POST COMPANY

CITY OF FREMONT
TRACT 2650
ALAMEDA COUNTY, CALIFORNIA

SCALE: 1" = 40' DECEMBER, 1964

MURRAY & MCCORMICK, INC.
CONSULTING CIVIL ENGINEERS
SAN LEANDRO, CALIFORNIA

SHEET 4 OF 5 SHEETS

AX-80617

AX-80617 Filed June 11th 1965 Book 50 Page 394

519