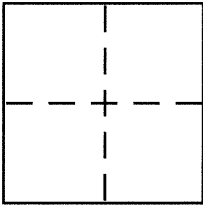


CORNER RECORD

City of BERKELEY

County of ALAMEDA, California

Brief Legal Description CITY OF BERKELEY MONUMENT B0728



CORNER TYPE

Government Corner . Control ☒
Meander . Property .
Rancho . Other .
Date of Survey 3-23-2016

COORDINATES (Optional)

N. _____
E. _____
Zone _____ NAD27 . NAD83 .
NAD83 Epoch _____
Elev. _____
Vert. Datum: NGVD29 . NAVD88 .
Meas. Units: Metric . Imperial .

Corner - Left as found ☒ Found and tagged . Established . Reestablished . Rebuilt .

Identification and type of corner found: Evidence used to identify or procedure used to establish or reestablish the corner:
**IN COMPLIANCE WITH SECTION 8771 OF THE PROFESSIONAL LAND SURVEYORS' ACT, THIS CORNER
RECORD IS BEING FILED TO ESTABLISH THE POSITION OF AN EXISTING MONUMENT PRIOR TO
STREET REHABILITATION CONSTRUCTION.**

A description of the physical condition of the monument as found and as set or reset: SEE PAGE 2

SURVEYOR'S STATEMENT

This Corner Record was prepared by me or under my direction in conformance with
the Land Surveyor's Act on 4-4-2016

Signed D. M. N. P.L.S or R.E. No. 5003



COUNTY SURVEYOR'S STATEMENT

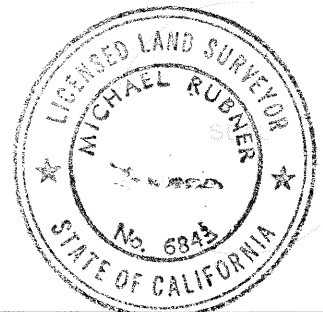
This Corner Record was received 25 APRIL, 2016

and examined and filed 4 MAY, 2016

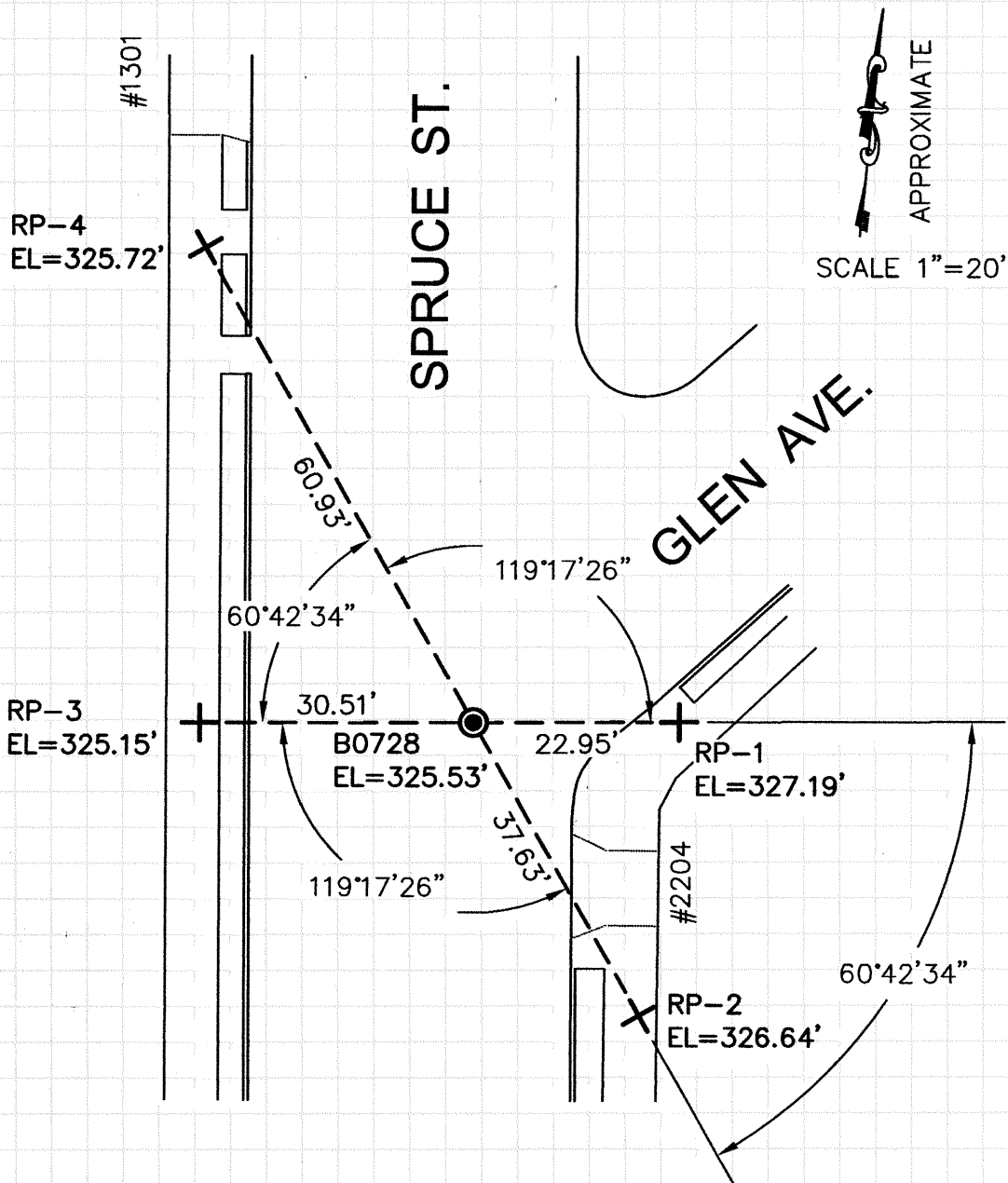
Signed Michael Rubner P.L.S or R.E. No. 6843

Title COUNTY SURVEYOR

County Surveyor's Comment _____



HU87T6



LEGEND

● 1/4" BRASS PIN CITY MONUMENT IN A STANDARD MONUMENT WELL

⊕ SET REFERENCE CROSS

NOTE:

THE EXISTING MONUMENT AS SHOWN IS REFERENCED BY STRAIGHT LINES BETWEEN RP-1 TO RP-3 AND RP-2 TO RP-4.