



paper model * model kartonowy * kartonmodellbau

DAVE'S
CARD CREATIONS
cutandfold.info

Centurion Mk.V

1/16 SCALE PAPER MODEL

OVERALL LENGTH = 24" (610mm) HEIGHT = 8" (203mm)



Updated Assembly Instructions

Version 03.12.2020

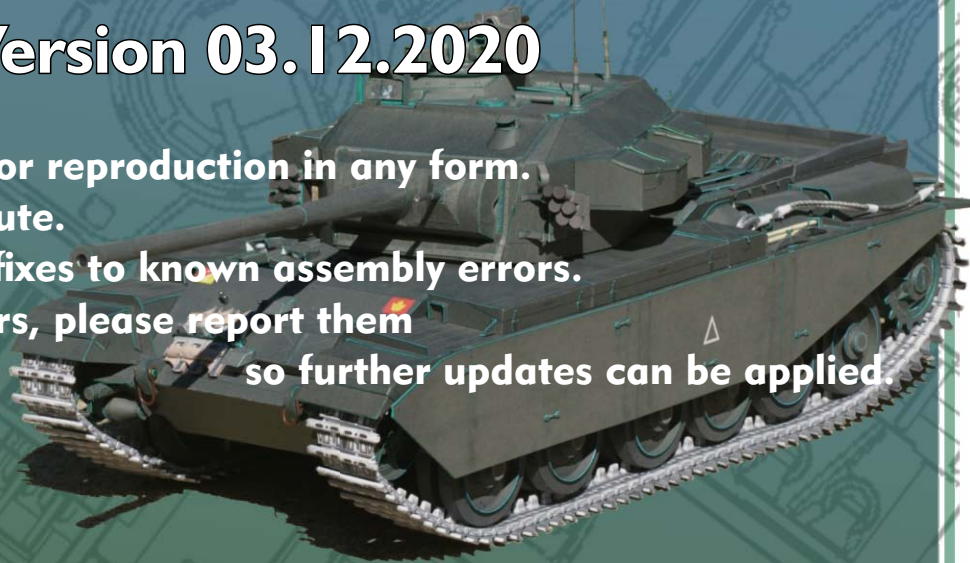
Not intended for copy or reproduction in any form.

Please do not redistribute.

Contains updates and fixes to known assembly errors.

If you find further errors, please report them

so further updates can be applied.



Canadian Army Armoured Regiment
(shown)

WWW.CUTANDFOLD.INFO
DAVE'S CARD CREATIONS
©2016 DAVE WINFIELD

NOT FOR SALE

SKILL LEVEL
○○○○●
PRINT & ASSEMBLE

Updated Assembly Instructions Version 03.12.2020

1/16 Scale Mk.V Centurion Tank

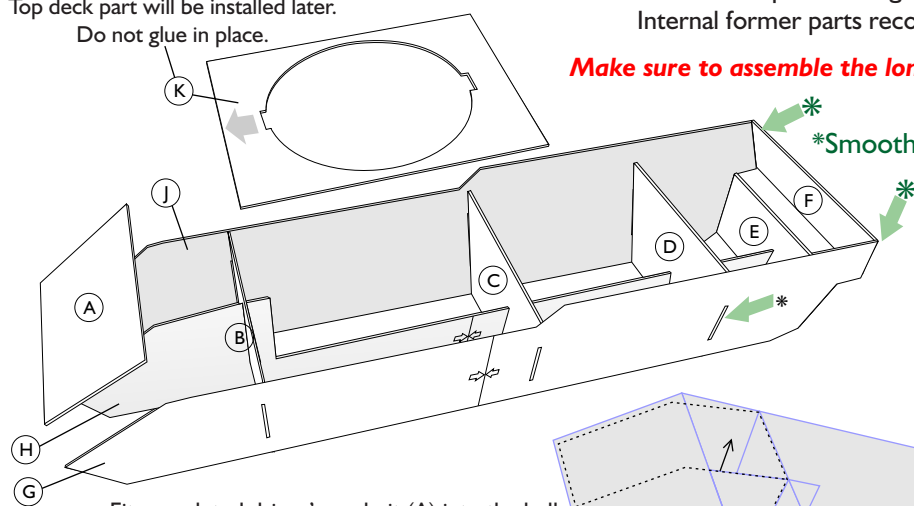
TIP

SCORE YOUR PARTS BEFORE YOU CUT.
FOLD AND TEST FIT PARTS BEFORE GLUING.

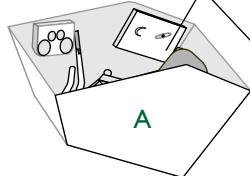
Print internal structure parts on regular weight paper and laminate to heavier card.
Internal former parts recommended thickness 1mm (maximum 1.2mm)

Make sure to assemble the longer Former parts (G,H & J) before laminating! (to single pieces of heavier card).

Top deck part will be installed later.
Do not glue in place.

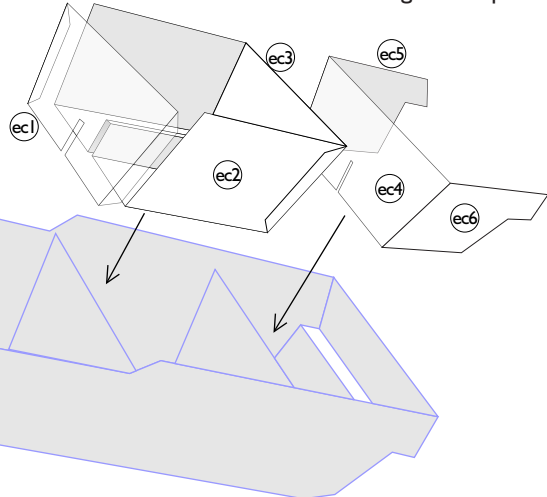


Fit completed driver's cockpit (A) into the hull structure from below and glue into place



*Smooth all joints and protruding tabs

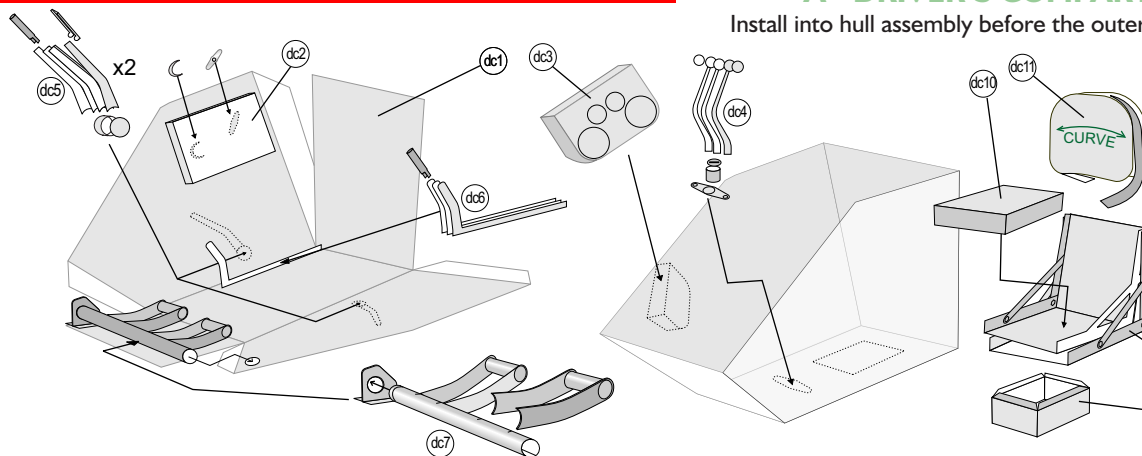
Install the Engine and Transmission compartments into the hull structure from above and glue into place



Parts are numbered sequentially, mainly just as a part reference, but can also be used as a possible assembly order. Alterations during the creation of these assembly pages has resulted in a few missing sequential numbers..but this will not affect the order of assembly.

A - DRIVER'S COMPARTMENT

Install into hull assembly before the outer "skins" are attached

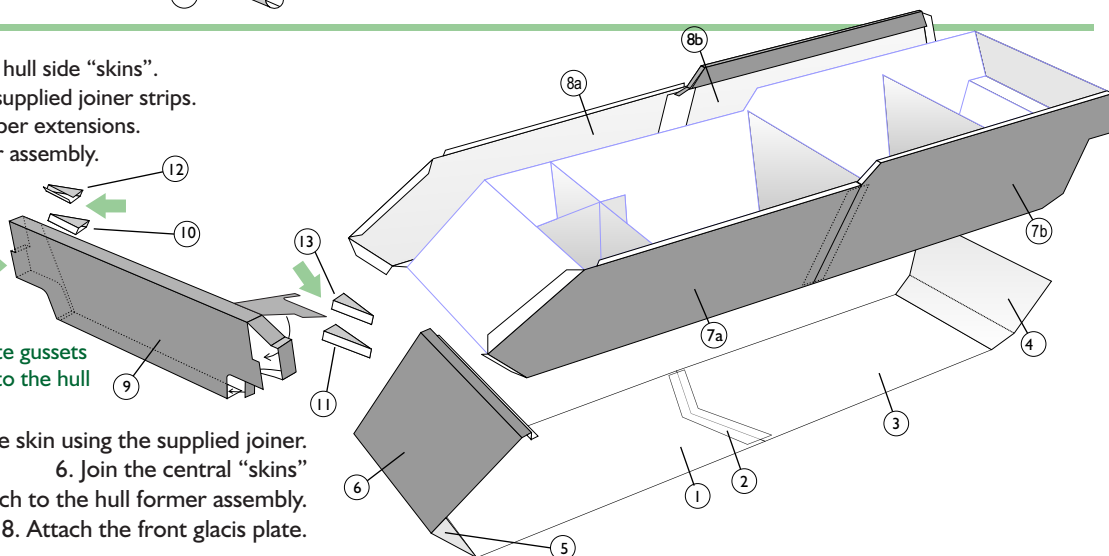


1. Score all fold lines before cutting the hull side "skins".
2. Assemble hull side "skins" using the supplied joiner strips.
3. Fold, form and assemble the rear upper extensions.
4. Attach side "skins" to the hull former assembly.

Assemble and attach the front glaucis plate to the front of the assembled hull

Assemble and install the front glaucis plate gussets after the glaucis plate has been attached to the hull

5. Join the underside skin using the supplied joiner.
6. Join the central "skins"
7. Attach to the hull former assembly.
8. Attach the front glaucis plate.



TIP

TEST FITTING OF PARTS BEFORE GLUING GIVES YOU A BETTER UNDERSTANDING OF THE ASSEMBLY AND ALLOWS YOU TO MAKE NECESSARY TRIMS AND ADJUSTMENTS

cm
inch

Copyright 2014 ©Dave Winfield Dave's Card Creations

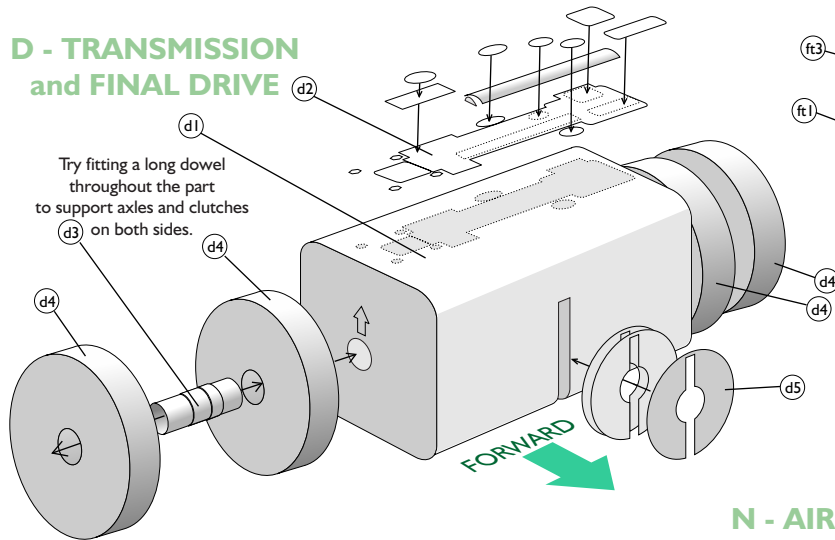
Updated Assembly Instructions Version 03.12.2020

1/16 Scale Mk.V Centurion Tank

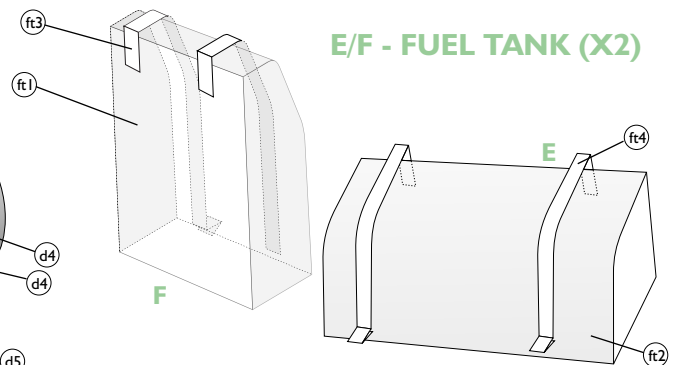
TIP

SCORE YOUR PARTS BEFORE YOU CUT.
FOLD AND TEST FIT PARTS BEFORE GLUING.

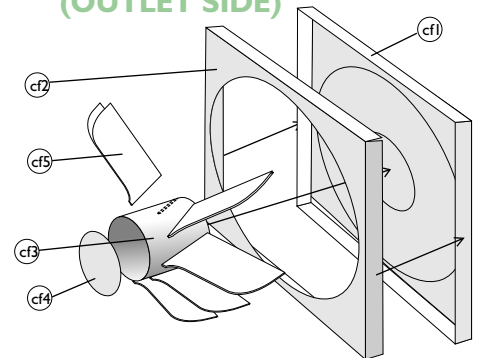
D - TRANSMISSION and FINAL DRIVE



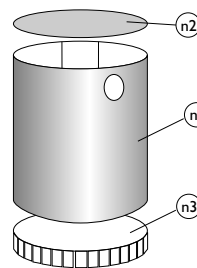
E/F - FUEL TANK (X2)



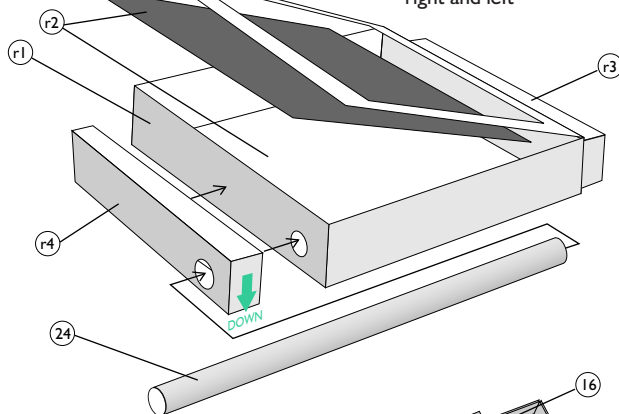
G - COOLING FAN (X2) (OUTLET SIDE)



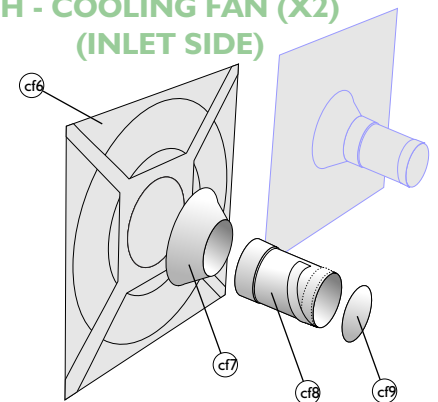
N - AIR FILTER HOUSING (X2)



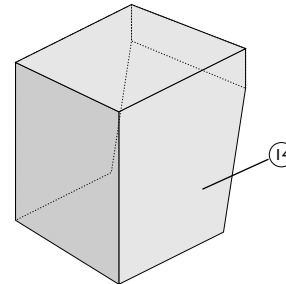
M - RADIATOR (X2) *right and left



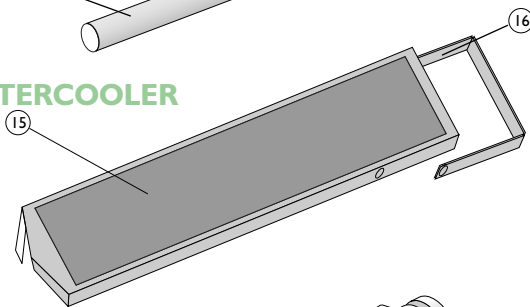
H - COOLING FAN (X2) (INLET SIDE)



O - OIL RESERVOIR



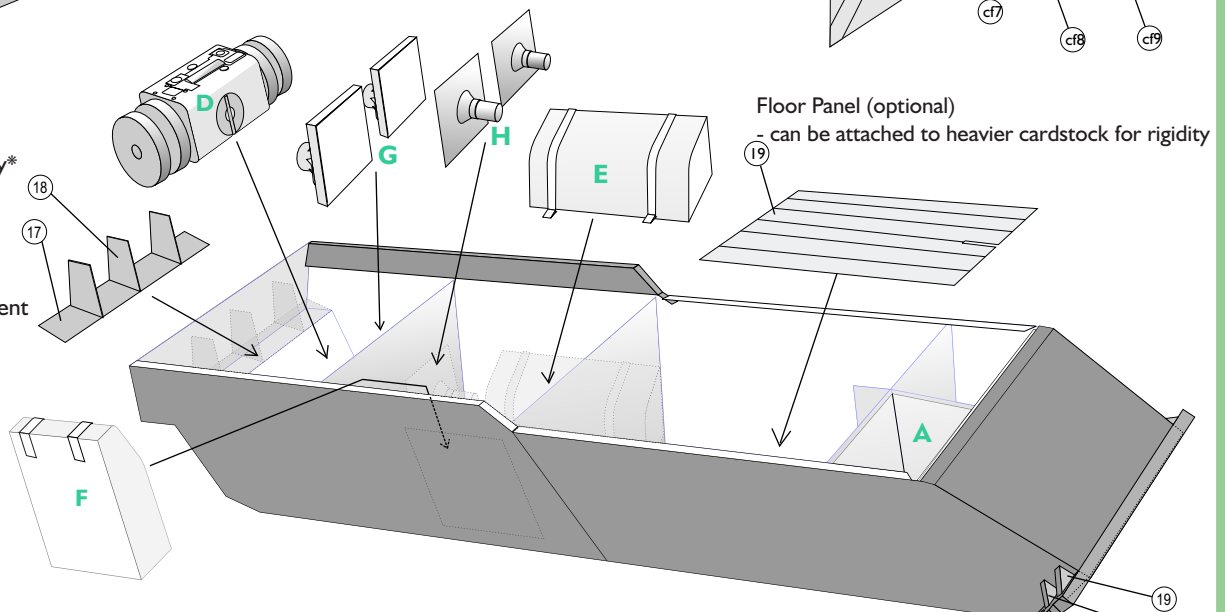
P - INTERCOOLER



Install into hull:

1. Rear cooling deflectors
2. (D) transmission assembly*
3. (G+H) cooling fans*
4. (E+F) fuel tanks*
5. Main floor panel

*refer to individual component
Assembly instructions



Updated Assembly Instructions Version 03.12.2020

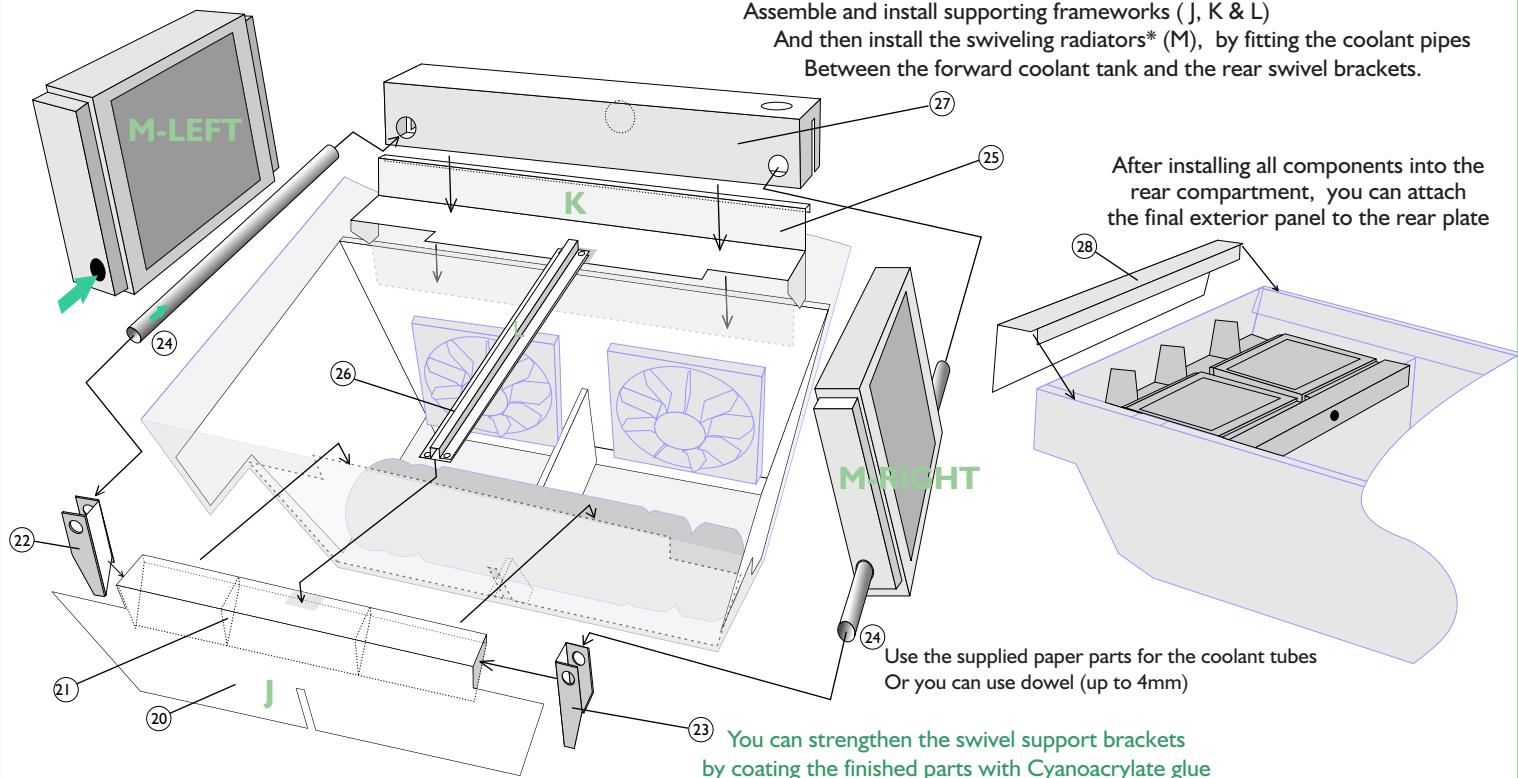
1/16 Scale Mk.V Centurion Tank

TIP

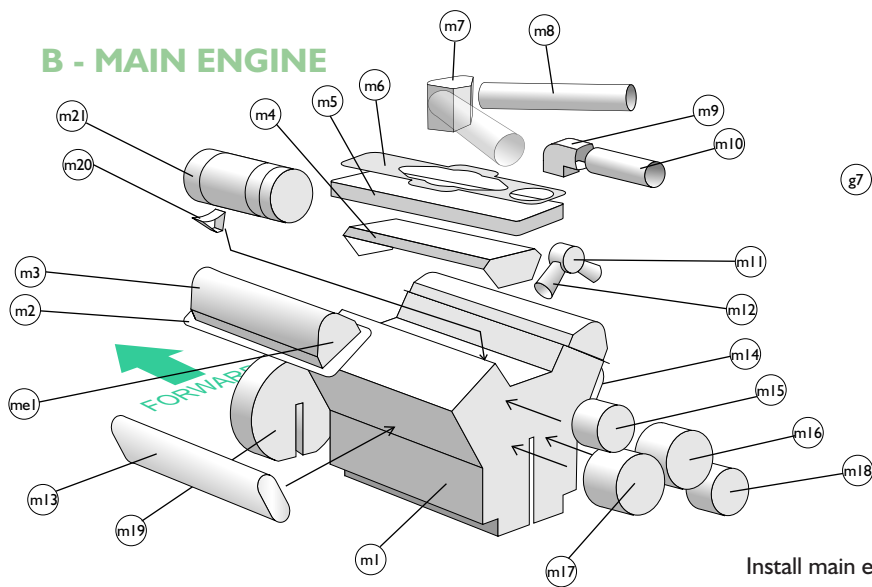
SCORE YOUR PARTS BEFORE YOU CUT.
FOLD AND TEST FIT PARTS BEFORE GLUING.

Assemble and install supporting frameworks (J, K & L)

And then install the swiveling radiators* (M), by fitting the coolant pipes
Between the forward coolant tank and the rear swivel brackets.

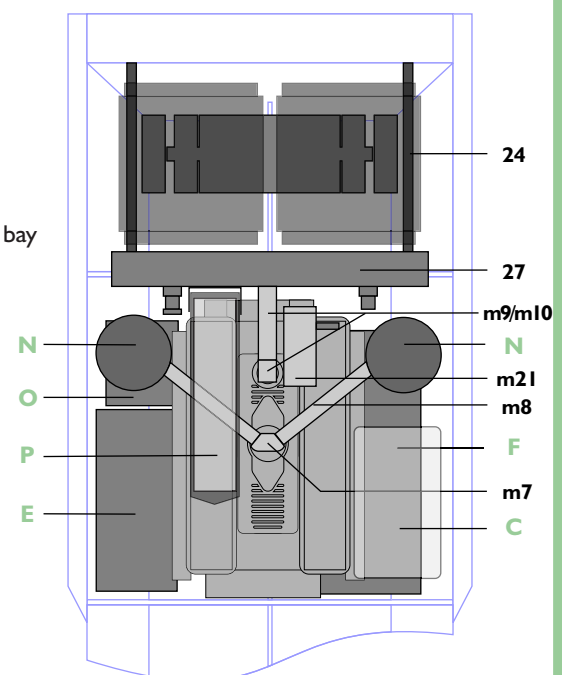
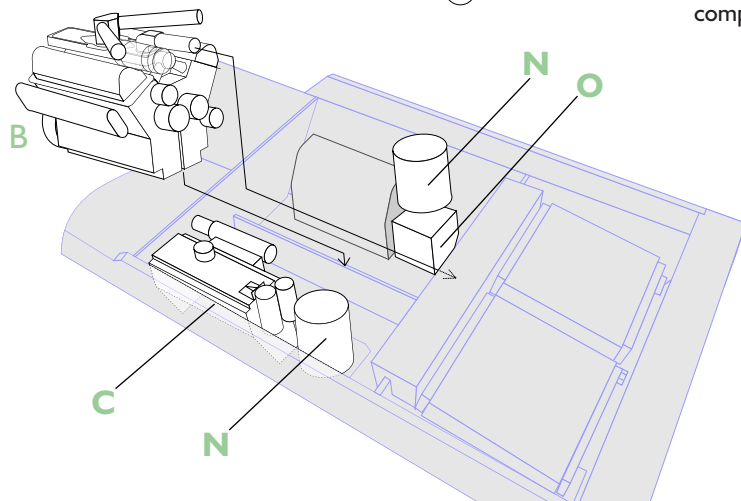
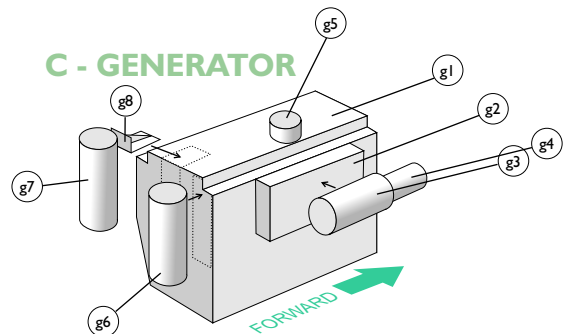


B - MAIN ENGINE



Install main engine bay
components

C - GENERATOR



1/16 Scale Mk.V Centurion Tank

Diagram illustrating the exploded view of the box lid assembly, showing the following components:

- 32 1 mm laminated
- 33 Single layer cardstock

30

29

31

K

Imm Laminat

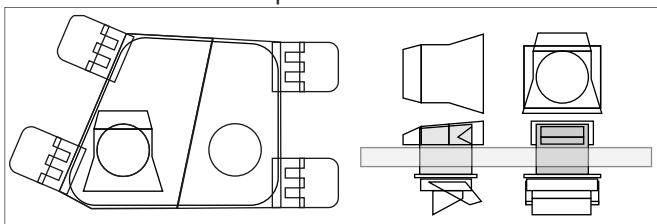
**Mk.5.1/5.2
ONLY**

cm 
inch
Copyright 2014 © Dave Winfield Dave's Card Creations

Updated Assembly Instructions Version 03.12.2020

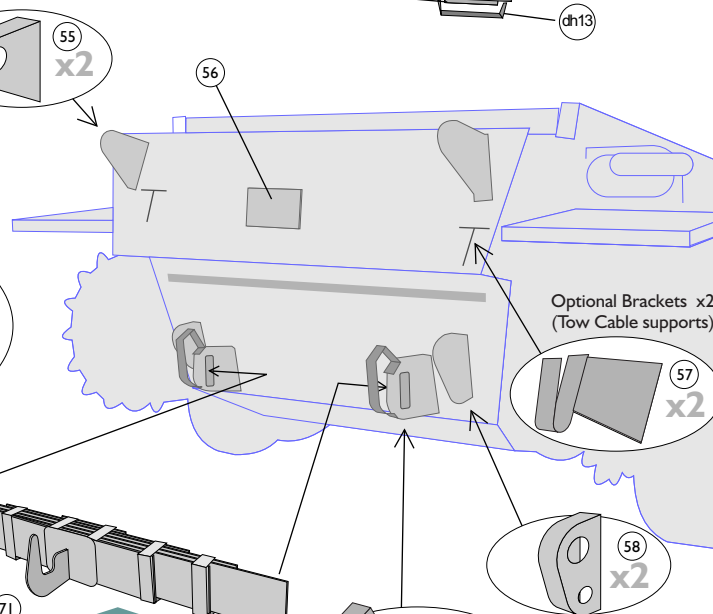
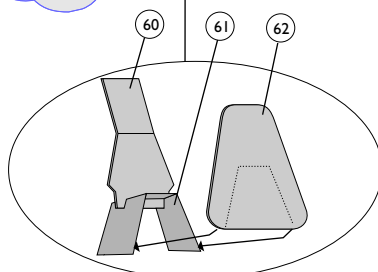
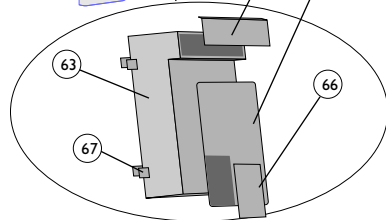
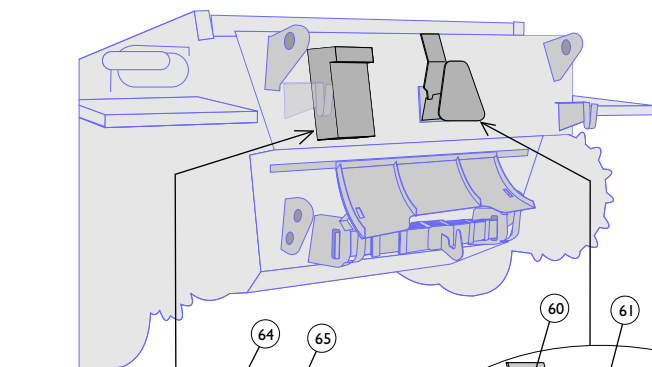
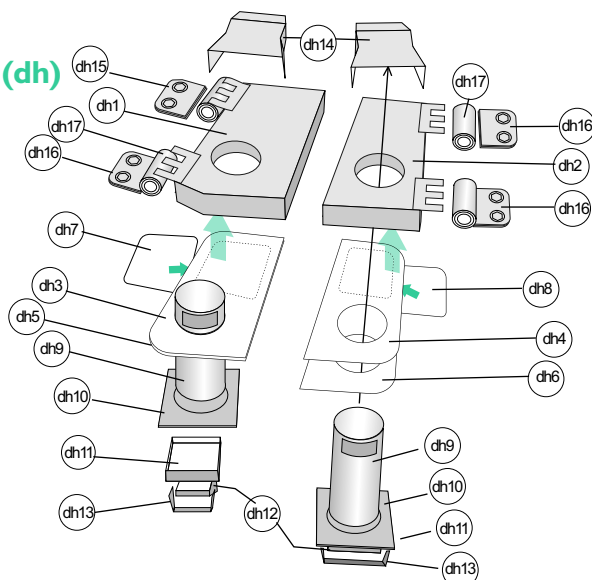
1/16 Scale Mk.V Centurion Tank

Install the pre-assembled hatches and hinges at the marked hinge locations.
You can install them fixed open or closed or make them moveable.



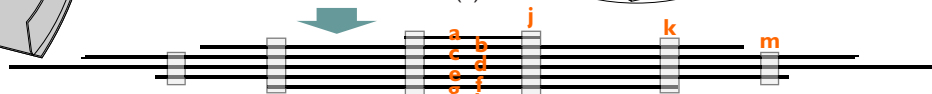
Driver's compartment Hatches and Periscopes

DH(dh)



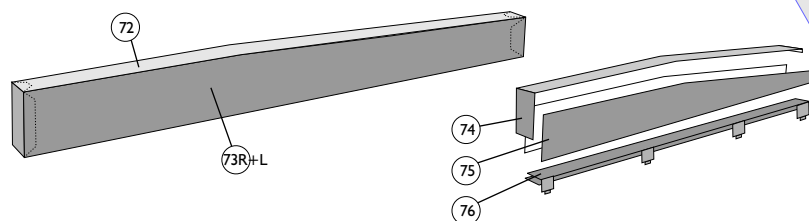
Optional Brackets x2
(Tow Cable supports)

Rear tow hook is mounted to
a dampening spring.
Assemble the spring and
fit into the slots in bracket (3)



Assemble the rear Deflector Plate by gluing the two layers,
but make sure to curve the part so that it cures
matching the shape of the curved gussets.
Attaching the gussets will lock the plate in the correct shape.

Assemble and install the turret/gun guards on to the rear hull and deck

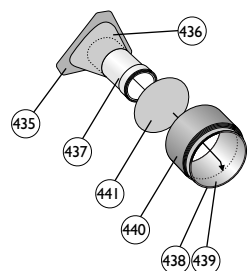


Updated Assembly Instructions Version 03.12.2020

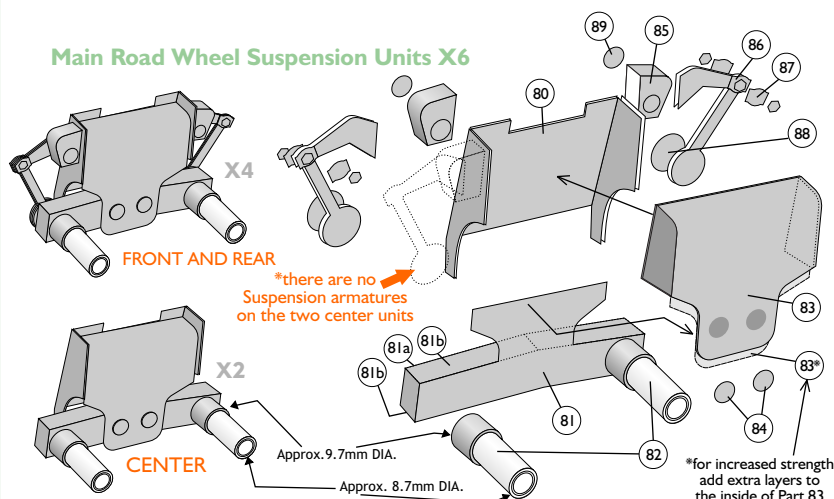
1/16 Scale Mk.V Centurion Tank

Track drive and support components are the same (mirrored) for both sides of the vehicle.
Make sure the components are aligned front to back and side to side to ensure the vehicle sits level.
It is very important that all Wheels, Gears and Rollers are in perfect alignment (to fit the Track).

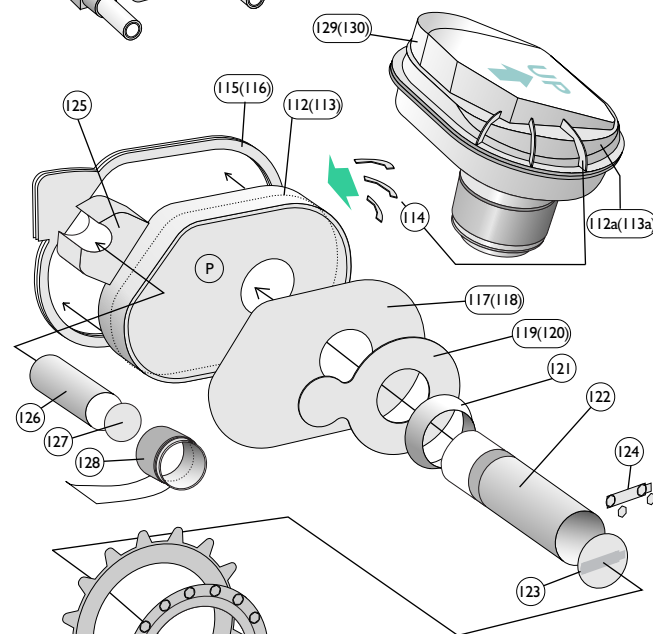
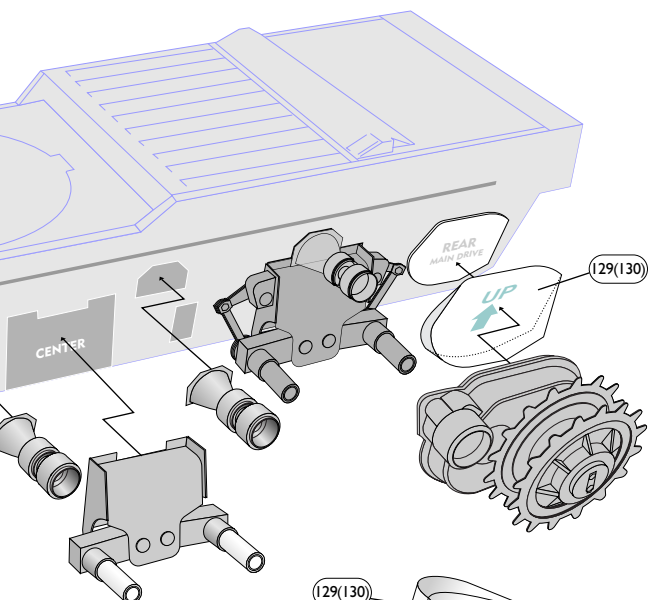
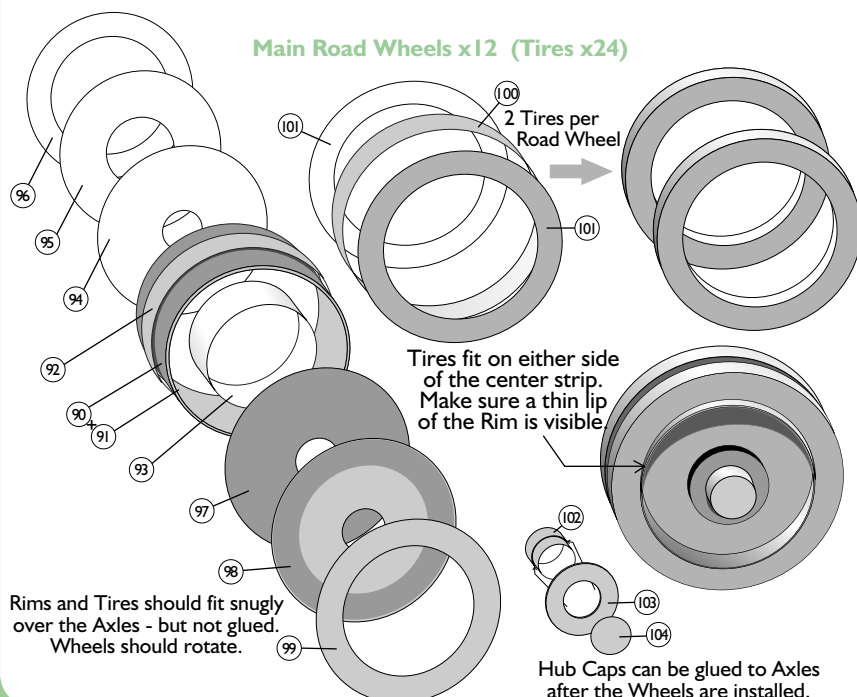
Aux Return Rollers x2



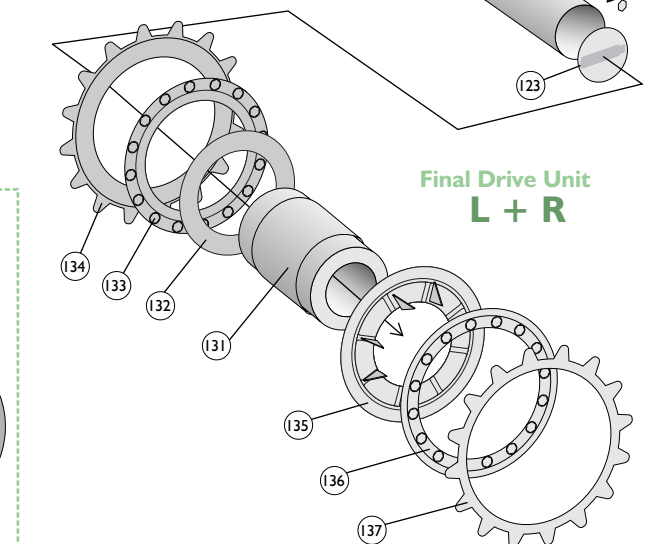
Main Road Wheel Suspension Units X6



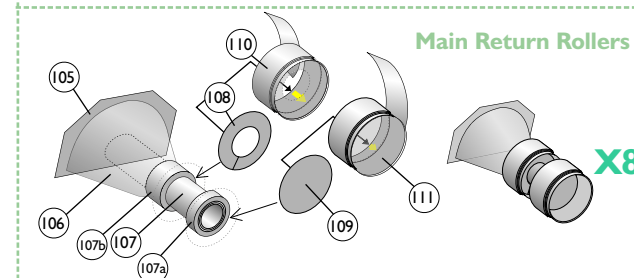
Main Road Wheels x12 (Tires x24)



Final Drive Unit L + R



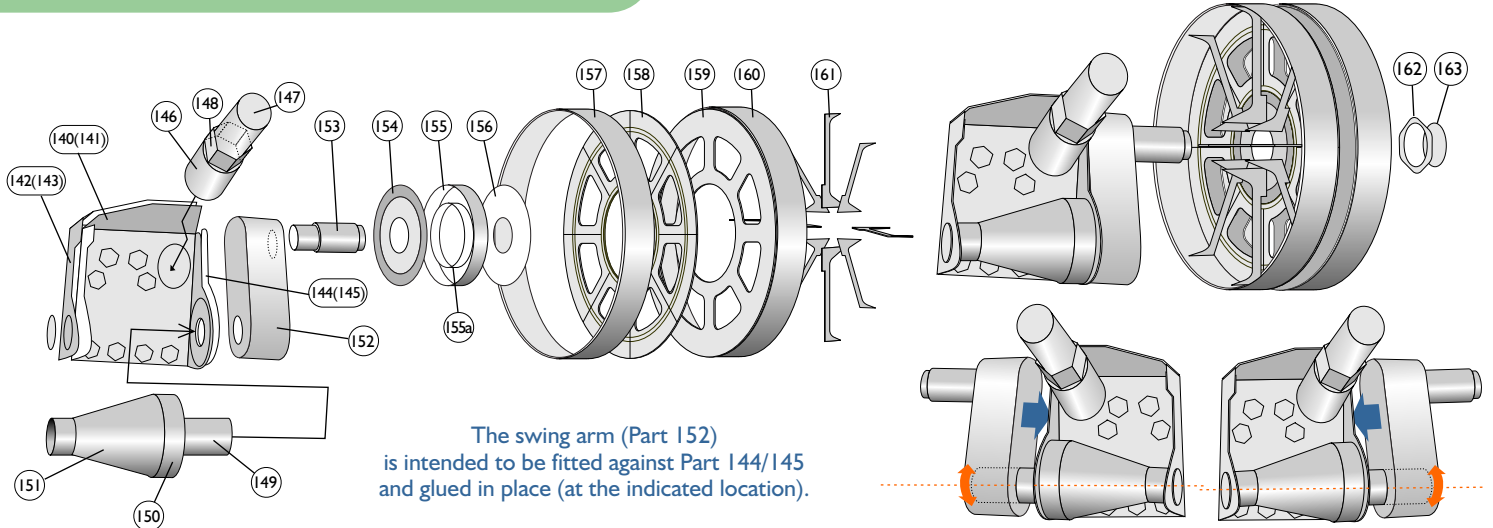
Main Return Rollers X8



Updated Assembly Instructions Version 03.12.2020

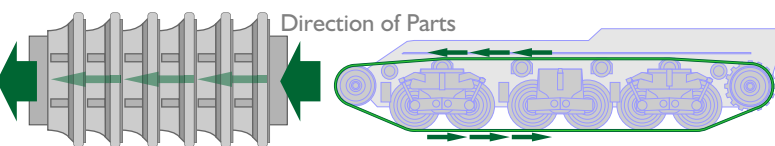
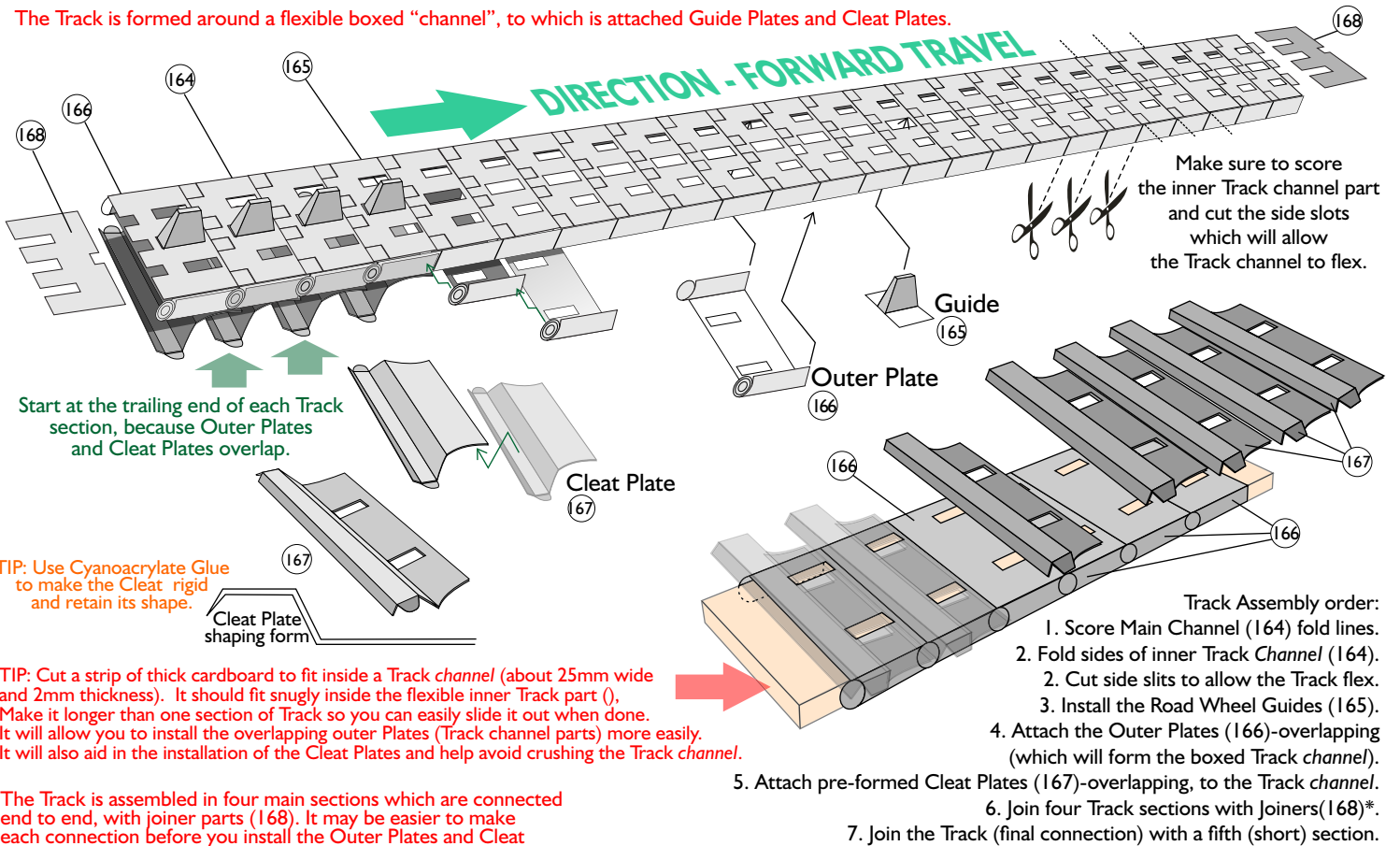
1/16 Scale Mk.V Centurion Tank

Front Idler And Track Tensioners L+R



TRACK ASSEMBLY

The Track is formed around a flexible boxed "channel", to which is attached Guide Plates and Cleat Plates.



Once the four track sections are assembled and connected, you can fit the track to the tank.

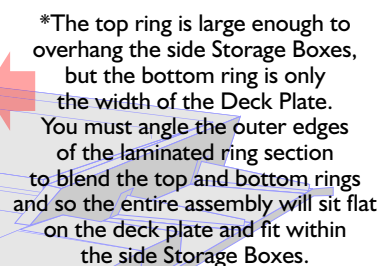
Carefully feed the track around all the guide wheels and rollers, and over the toothed drive wheel.

Pull the track taut - but not so tight as to bend any parts. [The Centurion track has little or no visible "sag" in it.]

You can now connect the Track with one final section (estimated at three Track Links). Assemble this part and attach into the Track.

Track "sag" is minimal and the Track parts have been designed to fit without extra adjustment, but variations do occur in every build. If you left the front tensioner adjustable, you can snug up the track a little more, but be warned this is an advanced (and difficult) procedure.

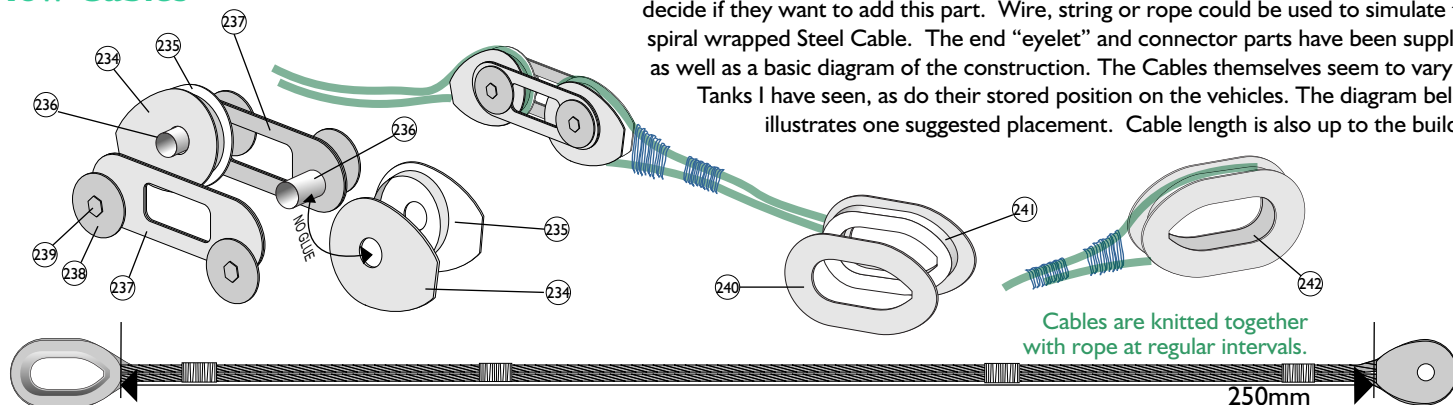
1/16 Scale Mk.V Centurion Tank



Updated Assembly Instructions Version 03.12.2020

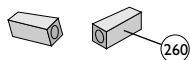
1/16 Scale Mk.V Centurion Tank

Tow Cables



The Tow Cables (stored at the rear of the vehicle) are an easily removable item and as such are an optional item for this kit. Since it is difficult to properly represent a three dimensional "cable" at this scale, in paper, I'm leaving it up to the builder to decide if they want to add this part. Wire, string or rope could be used to simulate the spiral wrapped Steel Cable. The end "eyelet" and connector parts have been supplied as well as a basic diagram of the construction. The Cables themselves seem to vary on Tanks I have seen, as do their stored position on the vehicles. The diagram below illustrates one suggested placement. Cable length is also up to the builder.

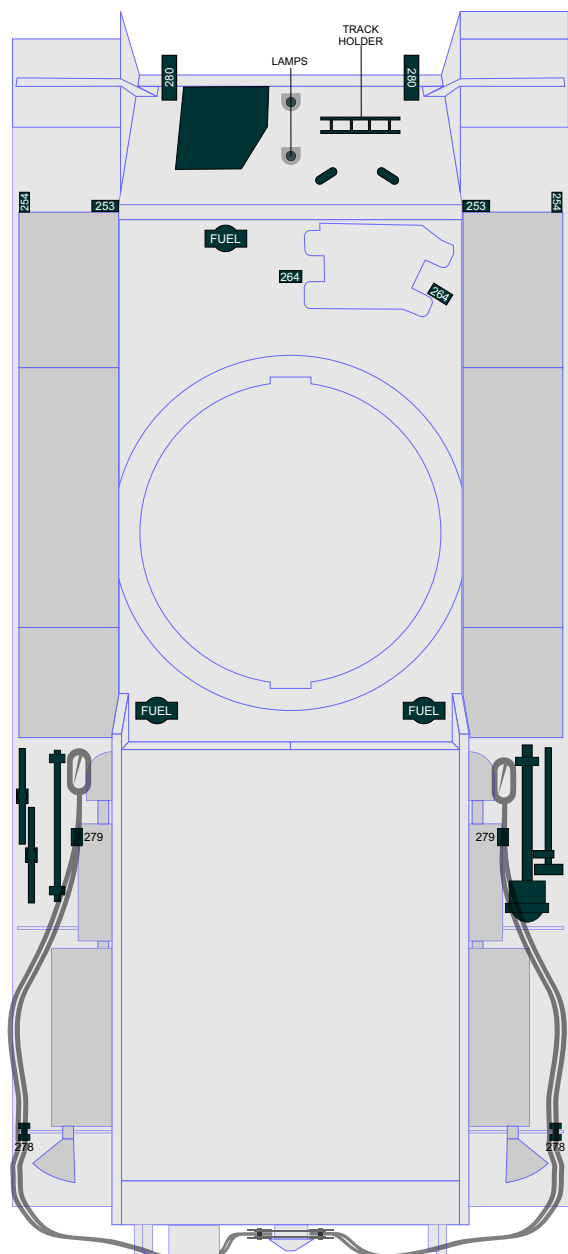
#(DRIVER'S HATCH) BUMPERS



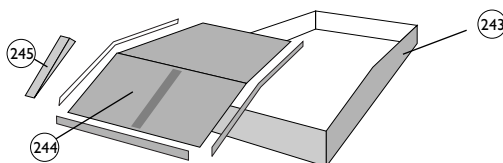
*(WINDSCREEN) BUMPERS



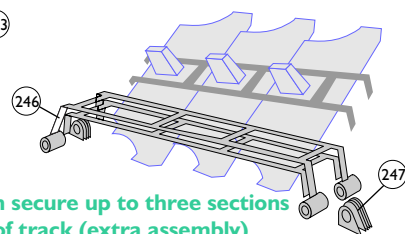
There are many surface accessories to be installed in no particular order. There are some standard(#) components, and many are optional(*) items. Many accessories were removed or refitted during operations and maintenance.



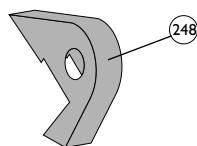
*GLACIS STORAGE CONTAINER



SPARE TRACK HOLDER

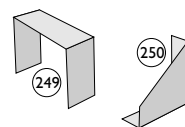


#GLACIS ANCHOR PLATES X2

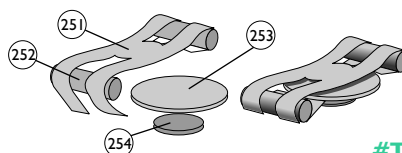


* can secure up to three sections of track (extra assembly)

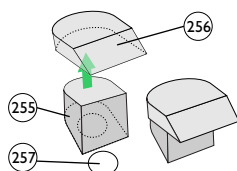
#GUARDS (R+L)



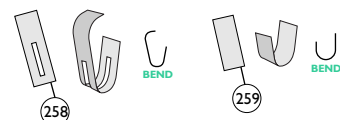
#FUEL ACCESS COVERS



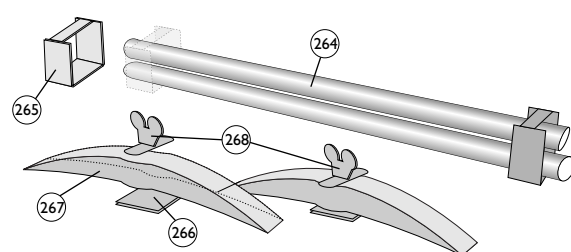
*LAMPS X2



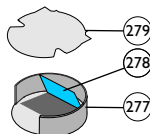
#TOW CABLE SUPPORTS



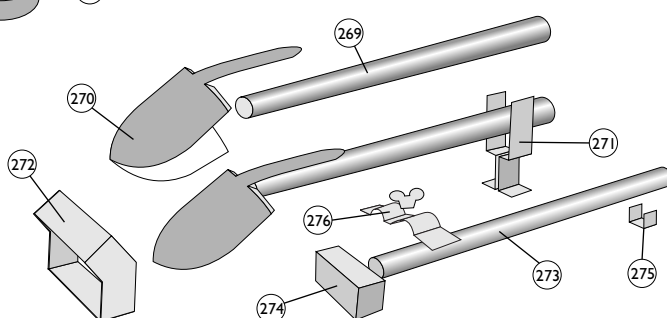
*PICK AXES



#GUNNERS PERISCOPE (MOUNTS ON TURRET)



*SHOVELS & SLEDGE

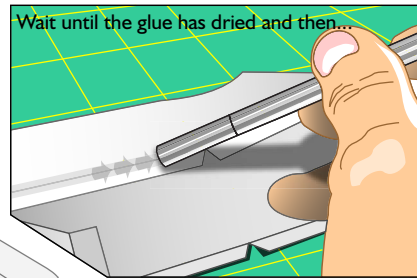


Updated Assembly Instructions Version 03.12.2020

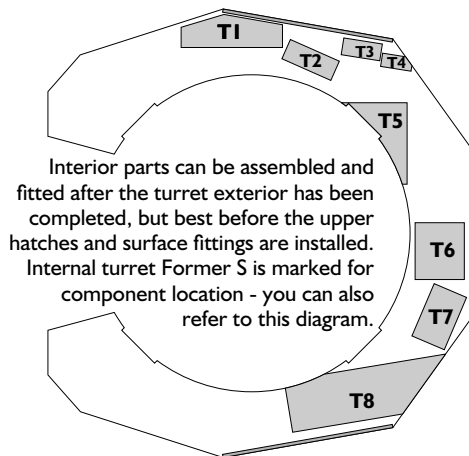
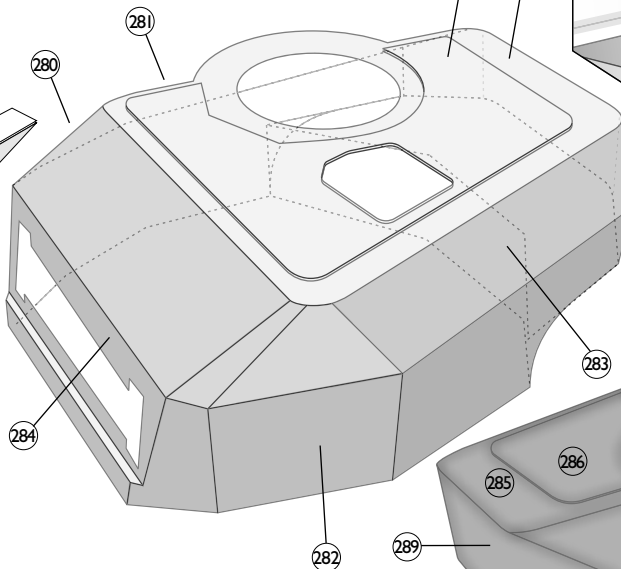
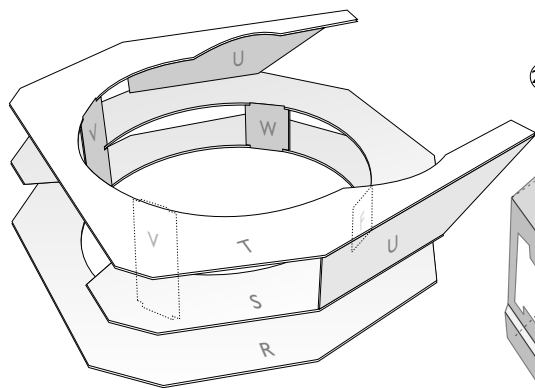
1/16 Scale Mk.V Centurion Tank

Print internal structure parts on regular weight paper and laminate to heavier card.
Internal former parts recommended thickness = 1mm (maximum 1.2mm)

*Part 286 - laminate to heavier card.
At least 1mm thickness.



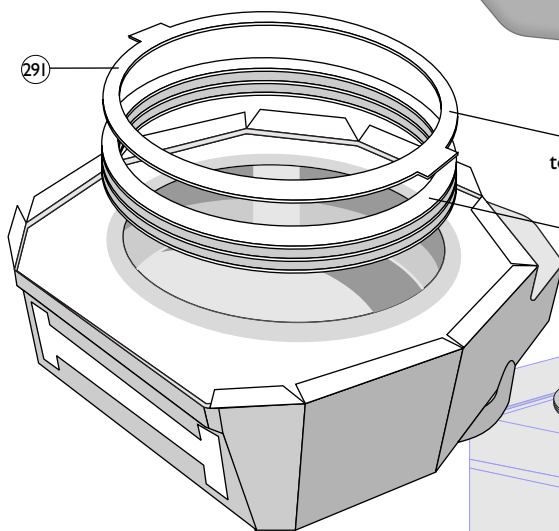
Unlike the Hull, the Turret is "cast" metal and does not have the sharp angles and seams of welded flat panels. To smooth out and round all the edges and seams, place the parts face down on a cutting mat or other flexible surface, and use a smooth rounded tool...like the butt end of your hobby knife...to flatten out and round the seams (from the inside).



Interior parts can be assembled and fitted after the turret exterior has been completed, but best before the upper hatches and surface fittings are installed. Internal turret Former S is marked for component location - you can also refer to this diagram.

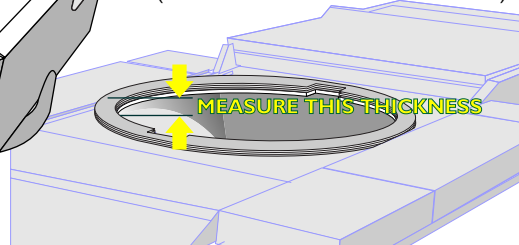
TURRET INTERIOR - DISCLOSURE

The turret interior in this model is not an accurate model of the real interior of a Centurion tank. Since the available viewing access into the turret is extremely limited, the interior was designed solely for aesthetic purposes. Even though care was taken to reference an actual Centurion tank interior, it was necessary to design parts to fit within the structural limitations of this particular paper model design and the available space within the swiveling paper turret.



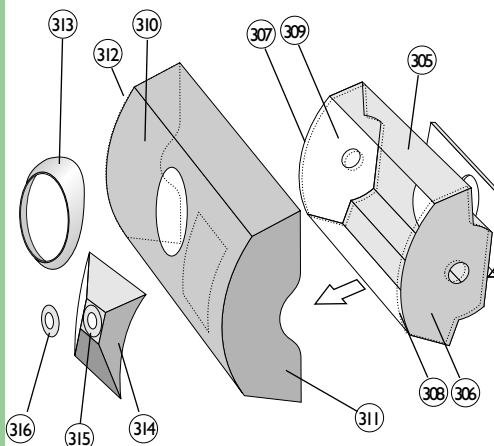
Turret Interlock Ring should be laminated to heavier card....minimum 1mm final thickness

Interlock Spacer Ring should be laminated to heavier card layers. Thickness should match the Hull Spacer Ring thickness (add .3mm-.5mm to allow movement)



TIP

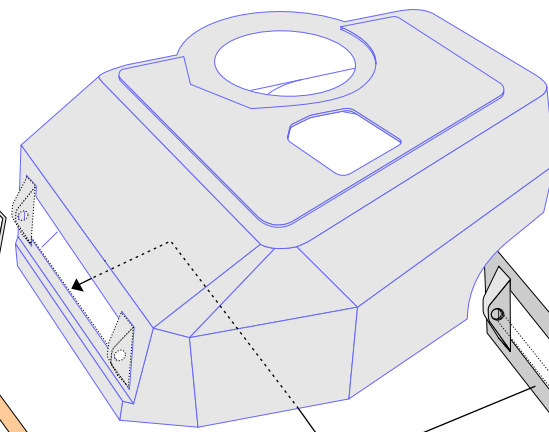
TEST FITTING OF PARTS BEFORE GLUING GIVES YOU A BETTER UNDERSTANDING OF THE ASSEMBLY AND WILL ALLOW YOU TO MAKE ANY NECESSARY TRIMS AND ADJUSTMENTS



A Hinge Pin is required.

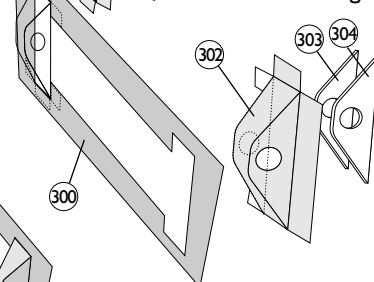
Use a Hardwood Dowel and paint the visible ends.
Minimum 3.2mm (1/8") - Maximum 3.8mm

HINGE PIN LENGTH = 68mm-70mm



Mount the completed Hinge "plate" from the underneath/inside and glue securely in place.

Make sure to install the internal supports to strengthen the sides of each hinge. Coat the inside of the assembly with glue for more strength.

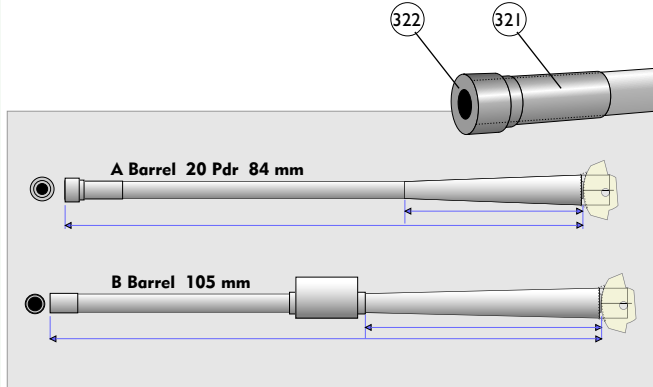


Tip: use the Hinge Pin (or a suitable Dowel) to align all the hinge parts during assembly.

Updated Assembly Instructions Version 03.12.2020

1/16 Scale Mk.V Centurion Tank

1. Assemble the Main Gun by rolling the Central Barrel. It is very important to roll the tube smooth and straight. Rolling the tube around a dowel or straight rod will help
2. Keep rolling the barrel to form the stepped Barrel end and then attach the end disc.
3. Roll the conical base part and attach over the Main Gun Barrel (use the spacer ring to center the Barrel).
4. Attach the notched mounting tube.

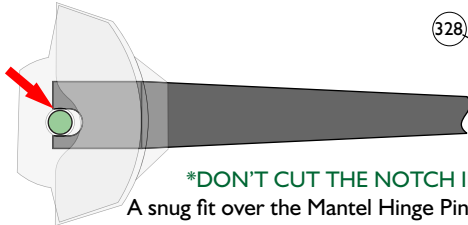


THE ORIGINAL Mk.5 CENTURION IS EQUIPPED WITH THE: 20 POUNDER, 84mm GUN [(A) BARREL].

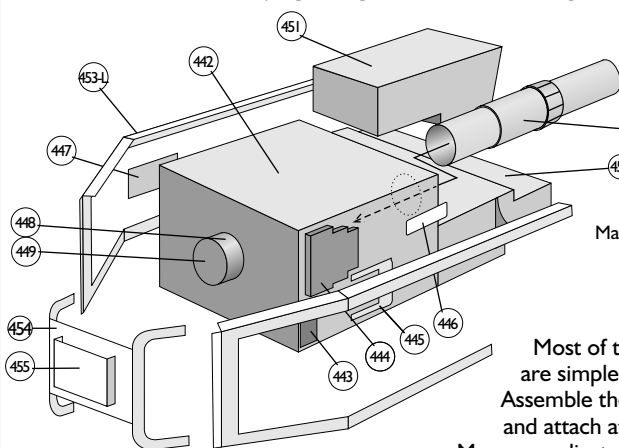
THE FIRST UPGRADE OF THE Mk.5 (Mk.5.1) WAS THE INSTALLATION OF A 2" ARMOUR PLATE ADDED TO THE UPPER FRONT GLACIS.

A FURTHER UPDATE TO Mk.5.1 CENTURIONS (Mk.5.2) WAS THE GUN CHANGE TO L7 TYPE 105mm GUN [(B) BARREL] WITH BORE EVACUATOR.

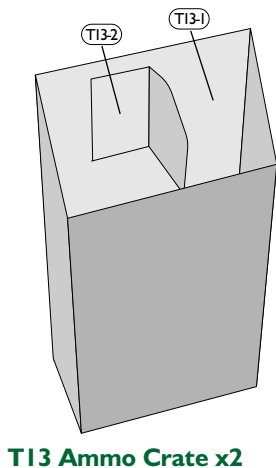
*Make sure to fit the Evacuator before installing the Barrel Tip parts



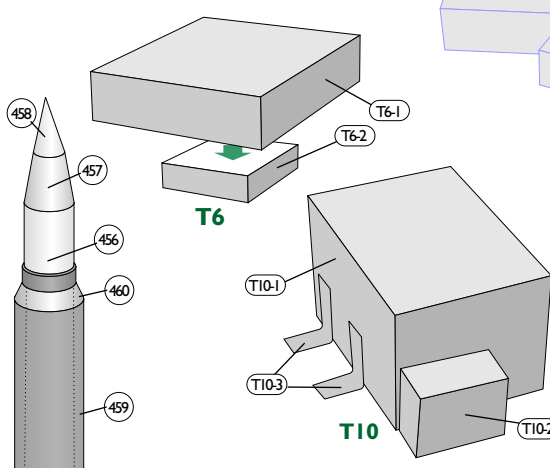
***DON'T CUT THE NOTCH IN THE BARREL TOO LARGE!**
A snug fit over the Mantel Hinge Pin is important to support the Barrel.
If you do cut the notch too large, wrap some paper around the Pin (to get a tighter fit when installing the Barrel)



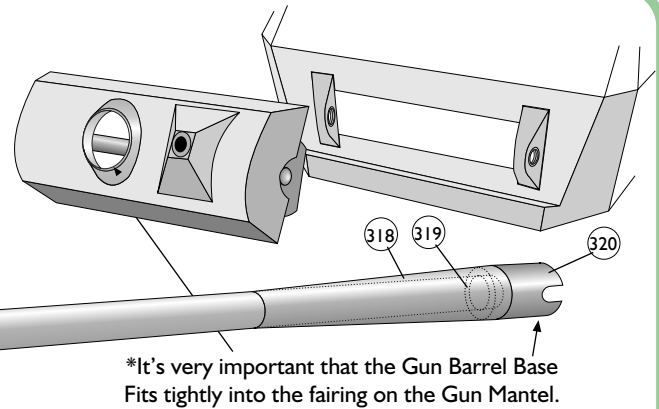
Most of the turret interior parts are simple box type constructions. Assemble them all in the same manner and attach at the designated locations. More complicated assemblies are shown below.



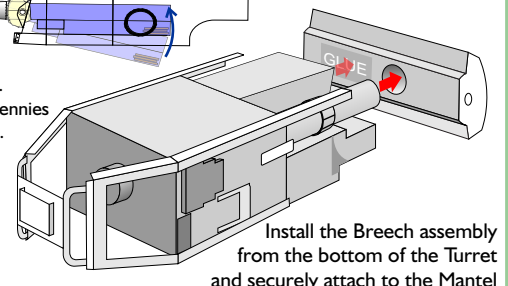
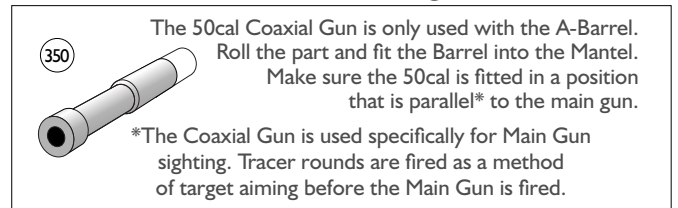
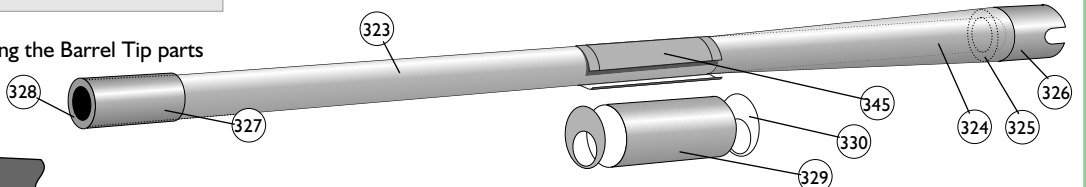
T13 Ammo Crate x2



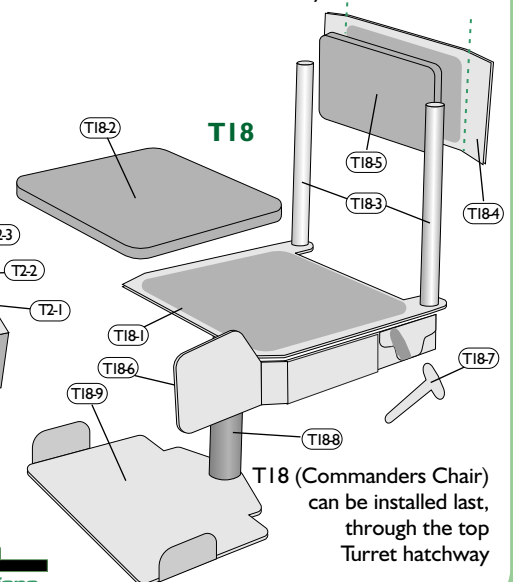
Ammunition



*It's very important that the Gun Barrel Base Fits tightly into the fairing on the Gun Mantel.



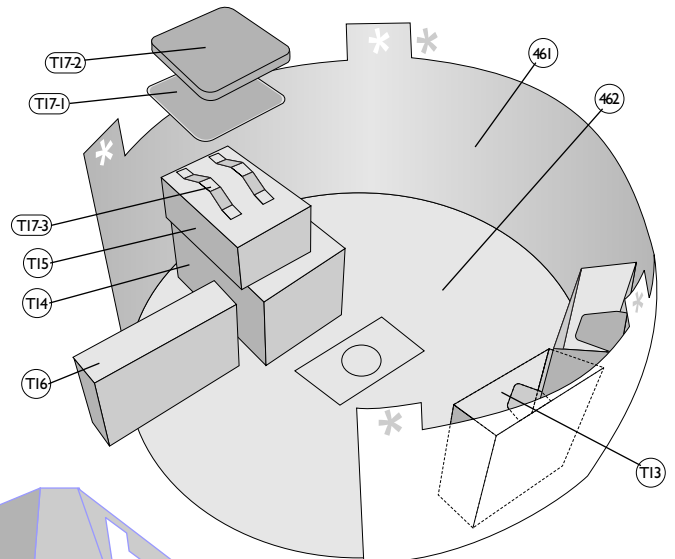
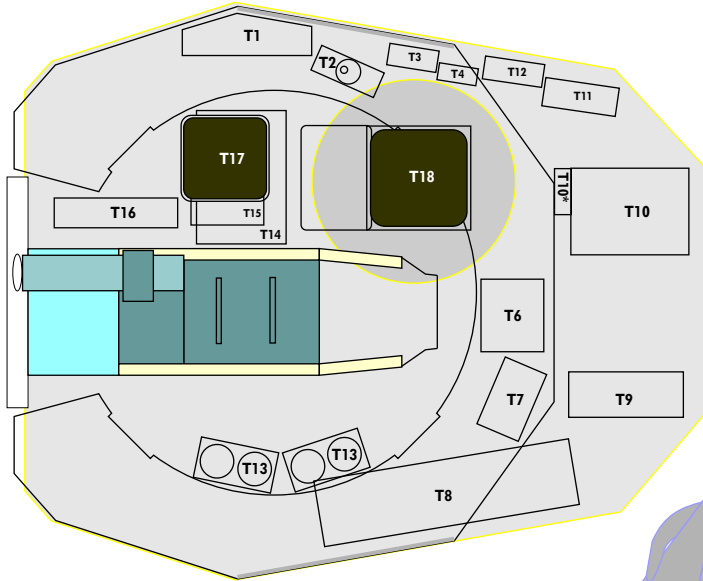
Install the Breech assembly from the bottom of the Turret and securely attach to the Mantel



T18 (Commanders Chair) can be installed last, through the top Turret hatchway

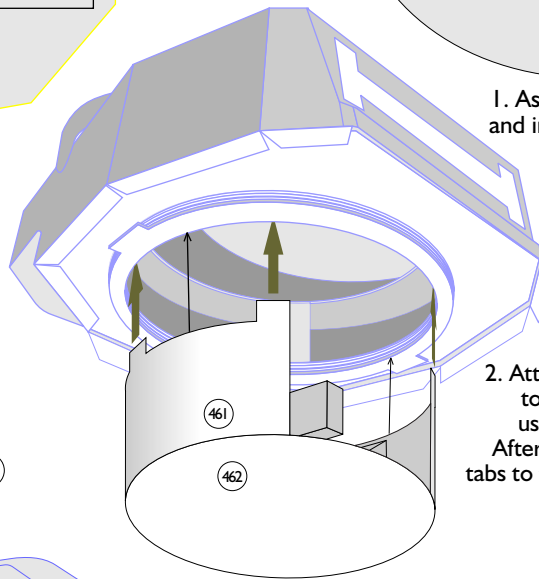
Updated Assembly Instructions Version 03.12.2020

1/16 Scale Mk.V Centurion Tank

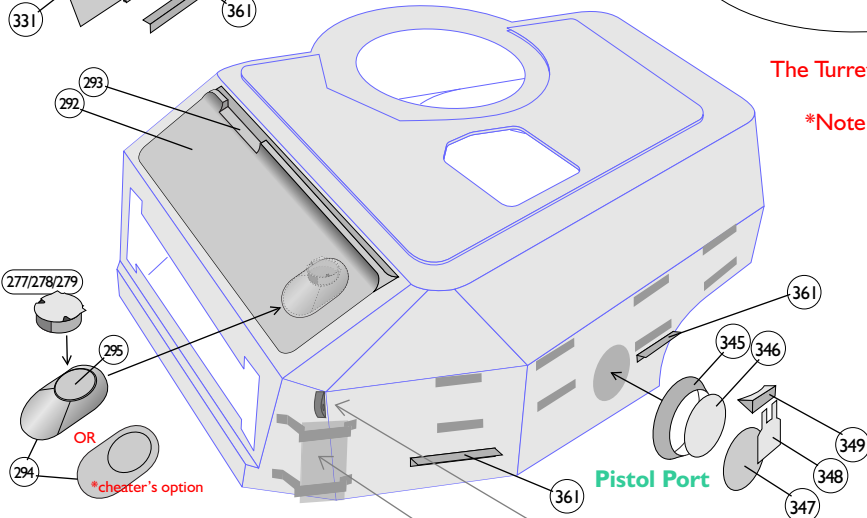
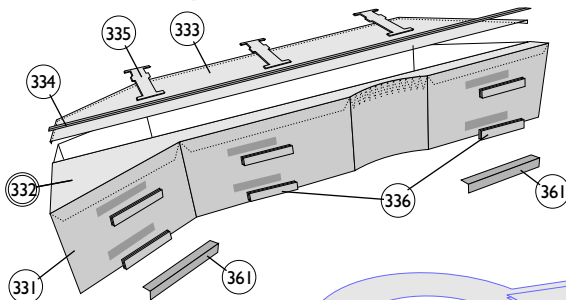


1. Assemble the lower Turret attachment and install all the designated components.

Turret Storage Boxes

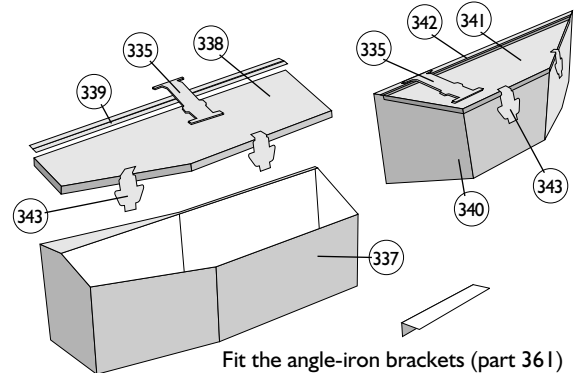


2. Attach the lower interior assembly to the underside of the Turret using the four tab extensions*. After aligning the assembly, glue the tabs to the inside of the connecting rings.



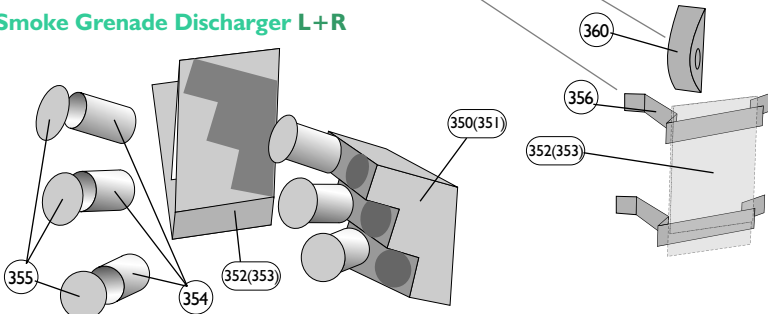
The Turret Box lids are intended to be closed, but a separate hinge strip is provided if you wish to create functioning* lids.

*Note that the boxes might require more internal strengthening.



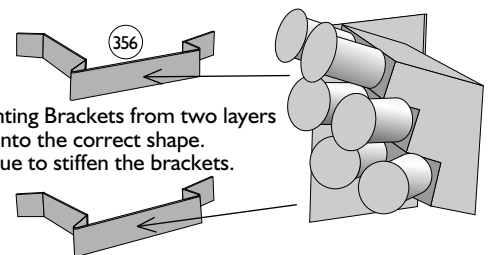
Fit the angle-iron brackets (part 361) under the storage boxes - after the boxes have been installed on the turret.

Smoke Grenade Discharger L+R



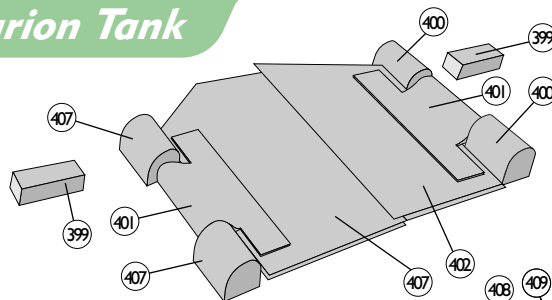
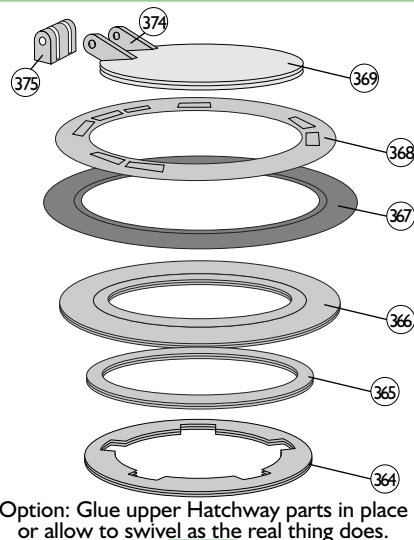
Right and left side Grenade Dischargers are assembled in the same manner and mounted on mirrored positions.

Form the Mounting Brackets from two layers - bend into the correct shape. Use CA Glue to stiffen the brackets.

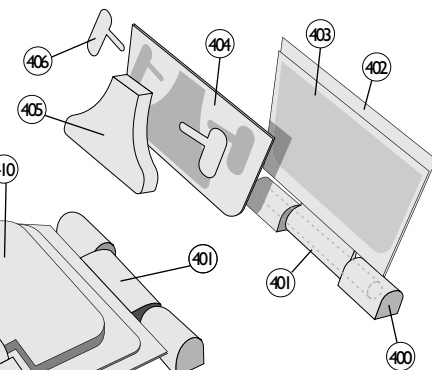


Updated Assembly Instructions Version 03.12.2020

1/16 Scale Mk.V Centurion Tank



Make (2) Hinge Pins from round Toothpick/Dowel
15-20mm Length - 1.5-2mm diam.

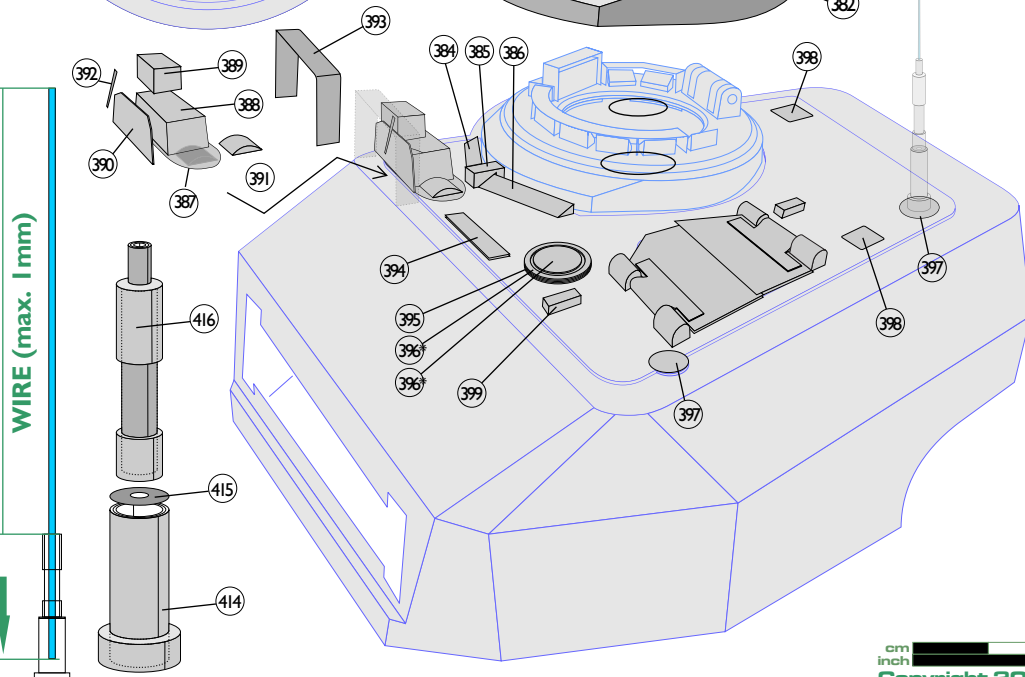
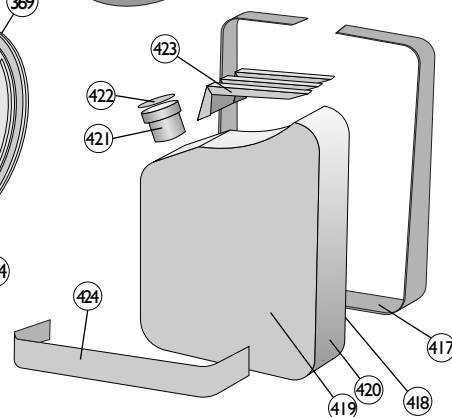
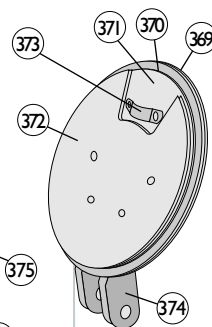
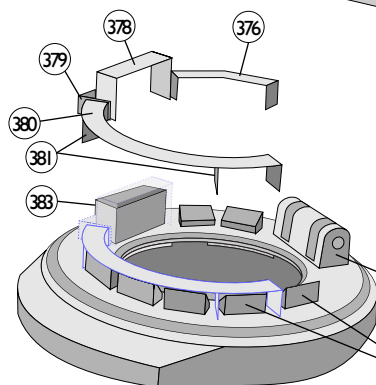
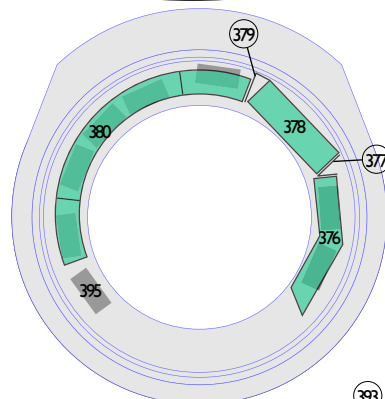
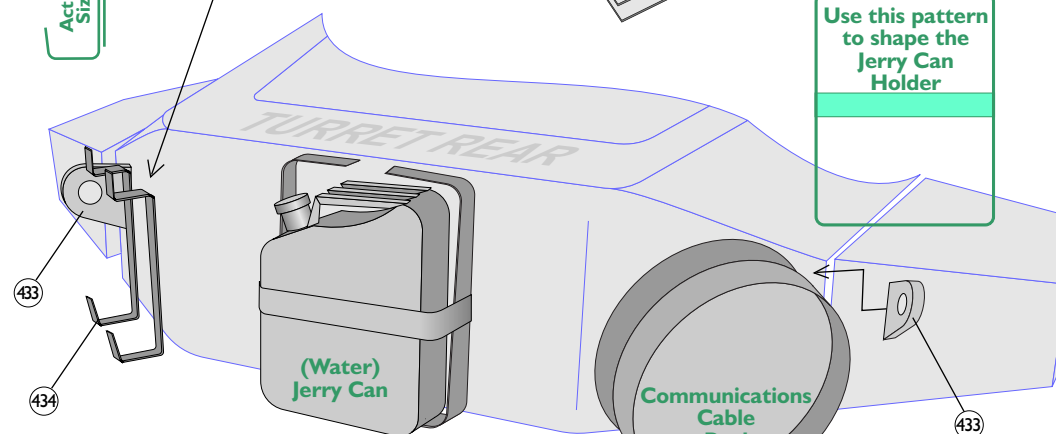


Spare Track Support Brackets

1. Double layer each bracket strip.
2. Form into the correct shape.
3. Overlap and attach the two Brackets.
4. Mount to the Turret.

Actual Bracket
Size & Shape

Use this pattern
to shape the
Jerry Can
Holder

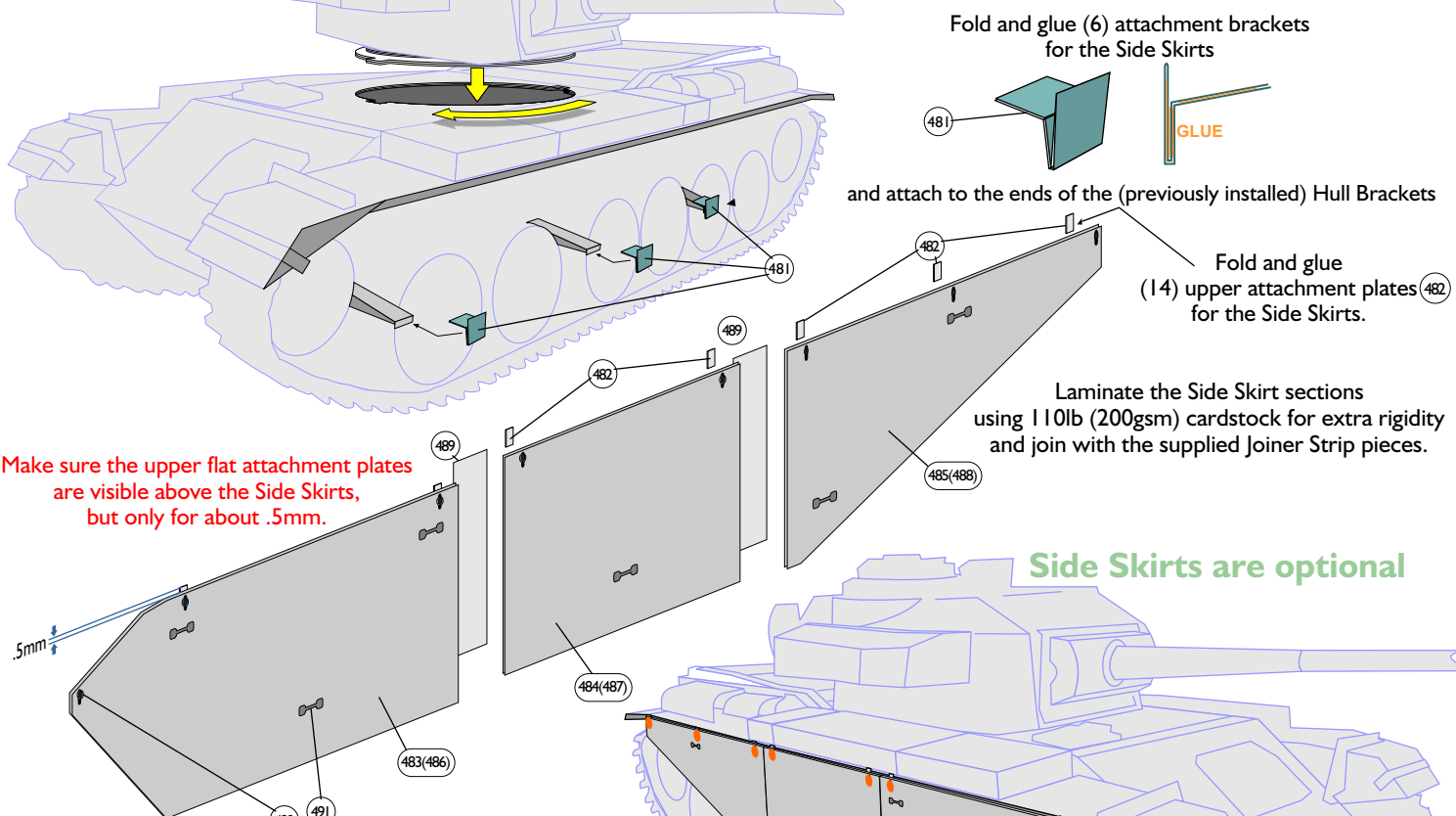
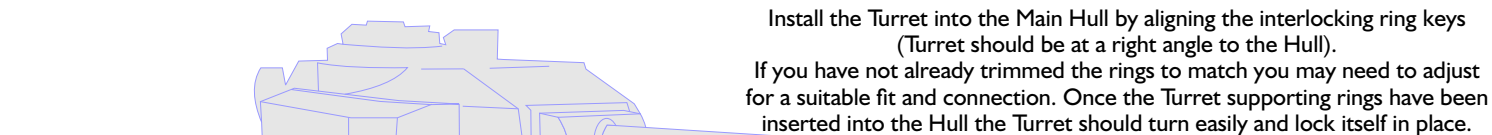
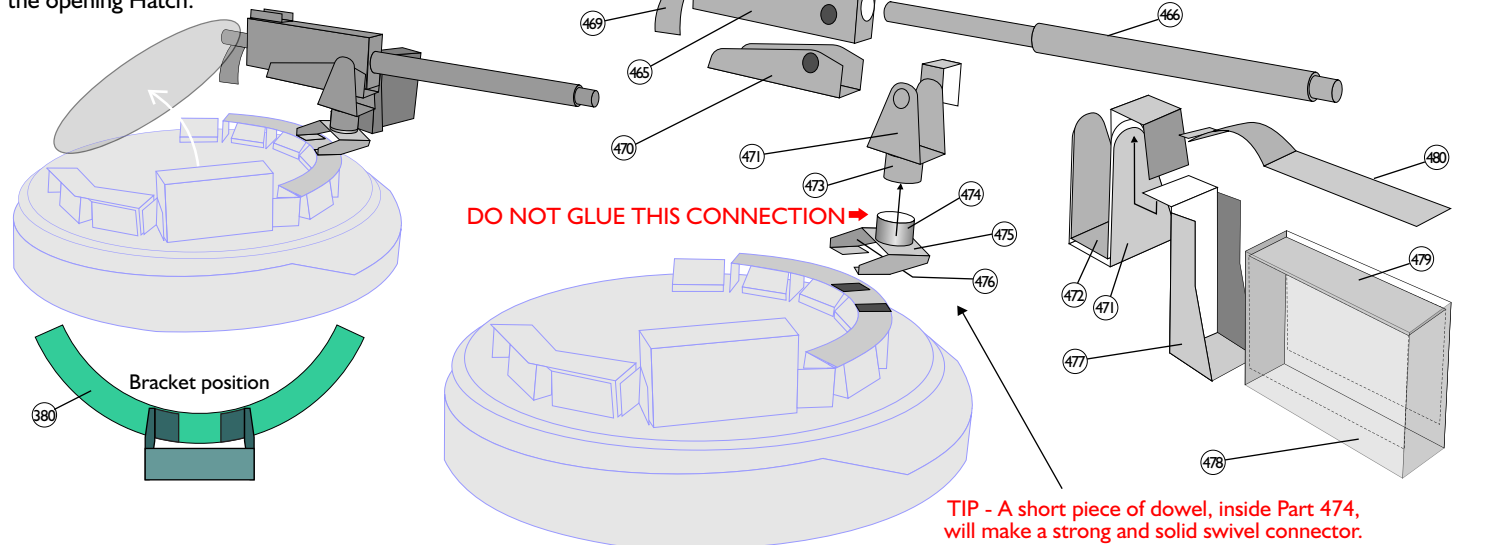


Updated Assembly Instructions Version 03.12.2020

1/16 Scale Mk.V Centurion Tank

30 Cal. Swiveling Machine Gun

If you glue the MG in place (no swivel), make sure it clears the opening Hatch.



Extra (3D) detail parts are provided for the Skirt Lift Handles and the attachment Bolt heads (and washers).

Side Skirts are attached to the sides of the Track covers using the small flat attachment plates, and when fitted are connected at 11 connecting points.

The Skirts should be below -and not extend above - the top edge of the Track Covers.