

# COUNTY SURVEYOR'S NOTE

This map is approved for filing in accordance with California Government Code Section 66412(d) and County Code Section 17-17(B)(5), pursuant to County approved Boundary Line Adjustment # B 70-2007

# RECORDER'S STATEMENT

Filed this 10 day of April, 2017, at SS A.M.  
in Maps, Drawer B6, Page 37, M.C.R.  
at the request of Ron W. Franz

Susan M. Ranochak, County Recorder  
Mendocino County, State of California

By: Michael Clump, deputy

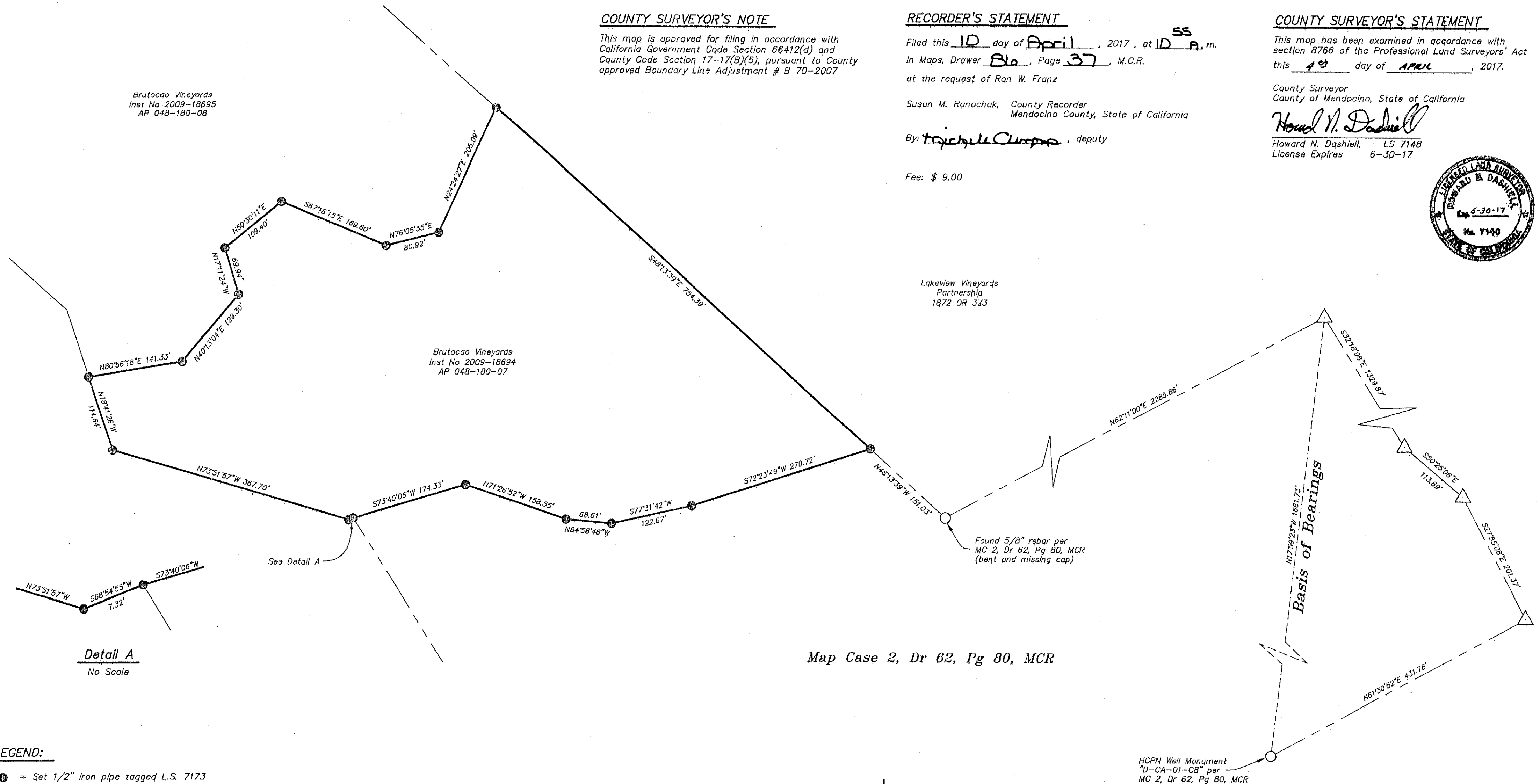
Fee: \$ 9.00

# COUNTY SURVEYOR'S STATEMENT

This map has been examined in accordance with section 8766 of the Professional Land Surveyors' Act this 4<sup>th</sup> day of APRIL, 2017.

County Surveyor  
County of Mendocino, State of California

Howard N. Dashiell  
Howard N. Dashiell, LS 7148  
License Expires 6-30-17



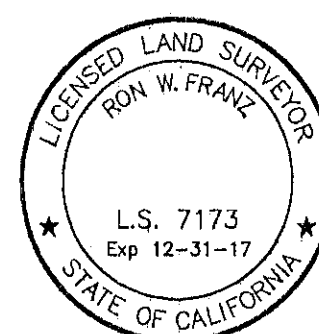
## LEGEND:

- = Set 1/2" iron pipe tagged L.S. 7173
- = Monument as noted
- △ = 5/8" rebar tagged LS 4518 per MC 2, Dr 62, Pg 80, MCR

## SURVEYOR'S STATEMENT

This map correctly represents a survey made by me or under my direction in conformance with the requirements of the Professional Land Surveyors' Act at the request of Steve Brutocao in March of 2017.

Ron Franz 4-3-17  
Ron W. Franz Date  
LS 7173, Expires 12-31-17



## NOTES:

This map constitutes a boundary line survey only and does not show rights of way, easements, or encroachments.

## BASIS OF BEARINGS

Between found monuments as shown hereon and per MC 2, Dr 62, Pg 80, MCR

Record of Survey  
Being a portion of the Dooley Ranch  
per MC 1, Dr 5, Pg 18, MCR  
and lying within Lot 26 of the Sanel Rancho  
Mendocino County, CA -- April 4, 2017

0 100 200 300  
Scale 1" = 100 ft

ONE SHEET ONLY

MAPS  
DRAWER B6  
PAGE 37

Serial # 144