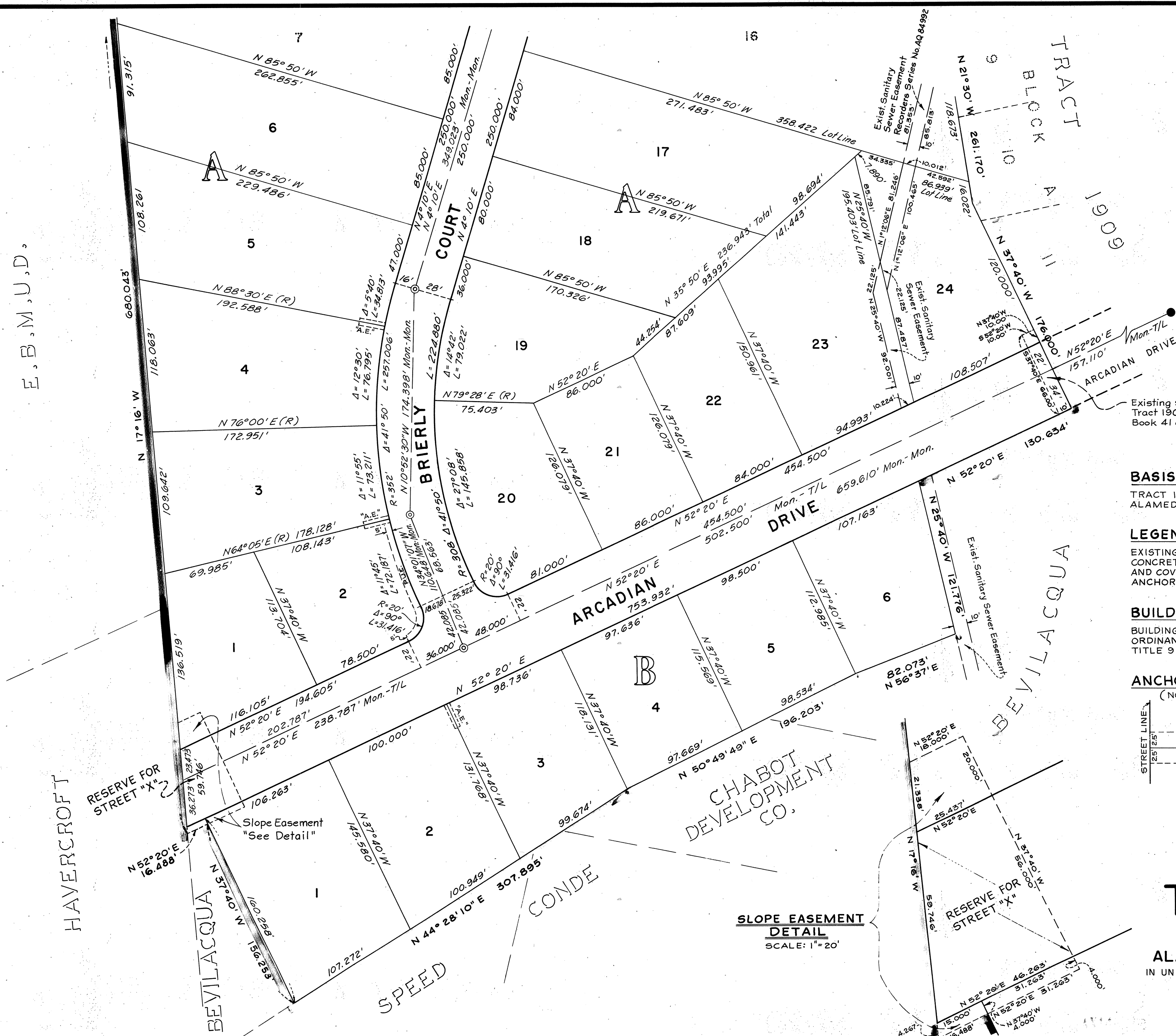


E.B.M.U.D.

**BASIS OF BEARINGS**TRACT 1909, EDEN TOWNSHIP,
ALAMEDA COUNTY, CALIFORNIA**LEGEND**

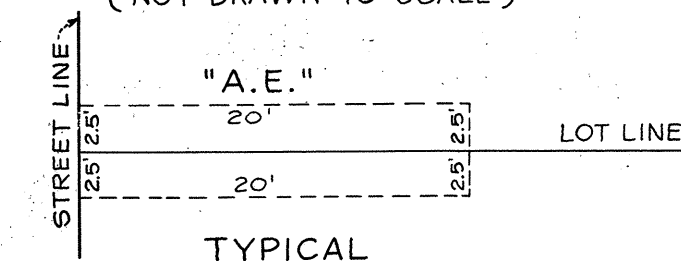
EXISTING MONUMENT
 CONCRETE MONUMENT WITH CAST IRON FRAME
 AND COVER TO BE INSTALLED
 ANCHOR EASEMENT (SEE DETAIL BELOW) "A.E."

BUILDING SET-BACK LINES

BUILDING SET-BACK LINES TO BE AS REQUIRED BY THE
 ORDINANCE CODE OF THE COUNTY OF ALAMEDA,
 TITLE 9, CHAPTER 2.

ANCHOR EASEMENT DETAIL

(NOT DRAWN TO SCALE)

**TRACT 2628**

EDEN TOWNSHIP
ALAMEDA COUNTY, CALIFORNIA

IN UNINCORPORATED TERRITORY IN THE COUNTY OF ALAMEDA

SCALE: 1" = 50' SEPTEMBER, 1965

MURRAY & MCCORMICK, INC.
 CONSULTING CIVIL ENGINEERS
 SAN LEANDRO, CALIFORNIA

SHEET 2 OF 3 SHEETS