

Owner's Statement

THE UNDERSIGNED ARE THE ONLY PERSONS HAVING ANY RECORD TITLE INTEREST IN THE LAND SUBDIVIDED AND SHOWN ON THIS MAP, DO HEREBY CONSENT TO THE PREPARATION AND RECORDATION OF THIS MAP, AND ARE ALL WHO ARE NECESSARY TO PASS CLEAR TITLE TO THE LAND SUBDIVIDED AND SHOWN HEREON.

THE UNDERSIGNED HEREBY IRREVOCABLY OFFER FOR DEDICATION THOSE LANDS LABELED PUBLIC UTILITIES EASEMENTS FOR PUBLIC UTILITIES PURPOSES AND STORM DRAINAGE EASEMENTS FOR STORM DRAINAGE FACILITIES. WE ALSO HEREBY IRREVOCABLY OFFER FOR DEDICATION PUBLIC ACCESS EASEMENTS.

THE EASEMENTS HEREINBEFORE OFFERED FOR DEDICATION SHALL BE KEPT OPEN AND FREE FROM PERMANENT BUILDINGS AND STRUCTURES OF ANY KIND. THE LOCAL AGENCY OR ANY OTHER MUNICIPAL CORPORATION, AGENCY, PUBLIC UTILITY COMPANY, OR DISTRICT SHALL HAVE THE RIGHT OF ACCESS INTO AND UPON ALL SUCH EASEMENTS FOR THE PURPOSE OF IMPROVING, MAINTAINING, OR REPAIRING SUCH EASEMENTS AND FACILITIES WITHIN THEM; HOWEVER SAID RIGHT SHALL NOT IMPOSE UPON SAID LOCAL AGENCY, CORPORATION, AGENCY, COMPANY, OR DISTRICT THE OBLIGATION OF MAINTENANCE, IMPROVEMENT, OR REPAIR.

OWNER: CAMINO RAMON ASSOCIATES, LLC A CALIFORNIA LIMITED LIABILITY COMPANY

BY: [Signature] BY: _____

ITS: Pres ST. THOMAS COSTA
Managing Member:

Owner's Acknowledgement

STATE OF CALIFORNIA
COUNTY OF MARIN

ON AUG 15, 2012, BEFORE ME, N. ACKERMAN, NOTARY PUBLIC

PERSONALLY APPEARED THOMAS A. BALDACC I, WHO PROVED TO ME ON THE BASIS OF SATISFACTORY EVIDENCE, TO BE THE PERSON(S) WHOSE NAME(S) IS/ARE SUBSCRIBED TO THE WITHIN INSTRUMENT, AND ACKNOWLEDGED TO ME THAT HE/SHE/IT EXECUTED THE SAME IN IT/HER/ITS AUTHORIZED CAPACITY(IES), AND THAT BY IT/HER/ITS SIGNATURE(S) ON THE INSTRUMENT, THE PERSON(S), OR THE ENTITY UPON BEHALF OF WHICH THE PERSON(S) ACTED, EXECUTED THE INSTRUMENT.

I CERTIFY UNDER PENALTY OF PERJURY UNDER THE LAWS OF THE STATE OF CALIFORNIA THAT THE FOREGOING PARAGRAPH IS TRUE AND CORRECT.

WITNESS MY HAND AND OFFICIAL SEAL

SIGNATURE N. Ackerman

N. ACKERMAN
COMM. # 1965762
CONTRA COSTA CO.
EXPIRES 1-6-16
(831) 784-7684

Owner's of Interest

SIGNATURES OF THE OWNERS OF THE FOLLOWING EASEMENTS HAVE BEEN OMITTED UNDER THE PROVISIONS OF SECTION 66436 OF THE SUBDIVISION MAP ACT. THEIR INTEREST IS SUCH THAT IT CANNOT RIPEN INTO A FEE TITLE AND SUCH SIGNATURES ARE NOT REQUIRED BY THE GOVERNING BODY.

NAMES	RECORD DATA	NATURE OF EASEMENT
PACIFIC GAS & ELECTRIC COMPANY & GENERAL TELEPHONE COMPANY, BOTH CALIFORNIA COMPANIES.	BOOK 3473, PAGE 246 OR OFFICIAL RECORDS	CONSTRUCTION & MAINTENANCE OF POLES, WIRES, CABLES, ANCHORS, ETC.

Surveyor's Statement

THIS MAP WAS PREPARED BY ME OR UNDER MY DIRECTION AND IS BASED UPON A FIELD SURVEY PERFORMED IN CONFORMANCE WITH THE REQUIREMENTS OF THE SUBDIVISION MAP ACT AND LOCAL ORDINANCE AT THE REQUEST OF _____ ON _____

I HEREBY STATE THAT ALL MONUMENTS ARE OF THE CHARACTER AND OCCUPY THE POSITIONS INDICATED, OR WILL BE SET IN THOSE POSITIONS WITHIN 24 MONTHS OF THE RECORDATION OF THIS MAP, AND THAT THE MONUMENTS ARE, OR WILL BE, SUFFICIENT TO ENABLE THE SURVEY TO BE RETRACED, AND THAT THIS FINAL MAP SUBSTANTIALLY CONFORMS TO THE CONDITIONALLY APPROVED TENTATIVE MAP.

SIGNED AND SEALED THIS 14th DAY OF AUGUST, 2012.

SIGNED: [Signature]
GARY R. IFLAND L.S. 7367



City Engineer's Statement

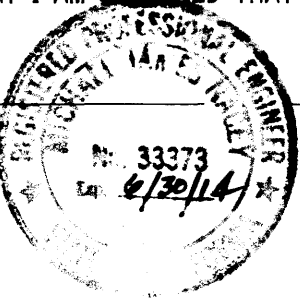
I DO HEREBY STATE THAT THIS SUBDIVISION MAP, HAS BEEN EXAMINED BY ME, AND THAT THE SUBDIVISION, AS SHOWN UPON SAID MAP, IS SUBSTANTIALLY THE SAME AS SAID SUBDIVISION APPEARED ON THE APPROVED, OR CONDITIONALLY APPROVED, TENTATIVE MAP, AND ANY APPROVED AMENDMENTS THEREOF, AND THAT ALL PROVISIONS OF THE SUBDIVISION MAP ACT OF THE STATE OF CALIFORNIA, AND AMENDMENTS THERETO, AND OF ANY LOCAL ORDINANCES APPLICABLE AT THE TIME OF APPROVAL OF THE TENTATIVE MAP, HAVE BEEN COMPLIED WITH.

JASON L. NUTT, RCE 67525
CITY ENGINEER, CITY OF NOVATO
STATE OF CALIFORNIA

11/20/12
DATE

I DO HEREBY STATE THAT I HAVE EXAMINED THIS SUBDIVISION MAP ON BEHALF OF THE CITY OF NOVATO, AND THAT I AM SATISFIED THAT THIS MAP IS TECHNICALLY CORRECT.

[Signature]
MICHAEL J. NAGEY, RCE 33373



10/10/12
DATE

City Clerk's Statement

THE CITY COUNCIL OF THE CITY OF NOVATO, STATE OF CALIFORNIA, AT A REGULAR MEETING HELD ON THE 1st DAY OF October, 2012, EXAMINED THE MAP OF "CANYON GREEN" SUBDIVISION AND THE CITY COUNCIL BY RESOLUTION No. 87-12 DULY PASSED AT THE MEETING AFORESAID, APPROVED THIS MAP AND, ON BEHALF OF THE PUBLIC REJECTS THE OFFER OF DEDICATION OF PUBLIC UTILITIES AND STORM DRAINAGE EASEMENTS, AND ACCEPTS THE PUBLIC ACCESS EASEMENTS.

SIGNED THIS 3rd DAY OF December, 2012.

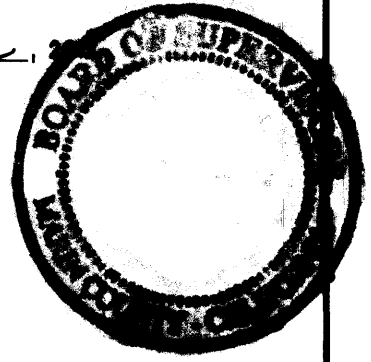
[Signature]
CITY CLERK OF THE CITY OF NOVATO, STATE OF CALIFORNIA

Clerk of the Board of Supervisors

I, THE UNDERSIGNED, CLERK OF THE BOARD OF SUPERVISORS OF THE COUNTY OF MARIN, STATE OF CALIFORNIA, DO HEREBY STATE THAT A GOOD AND SUFFICIENT BOND APPROVED BY AND IN THE AMOUNT FIXED BY SAID BOARD OF SUPERVISORS HAS BEEN FILED WITH SAID BOARD AND THAT SAID BOND BY ITS TERMS IS MADE TO INURE TO THE BENEFIT OF SAID COUNTY OF MARIN AND IS CONDITIONED FOR THE PAYMENT OF ALL TAXES, WHICH MAY BE AT THE TIME OF RECORDING OF THIS MAP A LIEN AGAINST THE TRACT OR SUBDIVISION OF LAND SHOWN HEREON OR ANY PART THEREOF, BUT NOT YET PAYABLE.

WITNESS MY HAND AND SEAL ON THIS 5th DAY OF December, 2012.

SIGNED _____
CLERK OF THE BOARD OF SUPERVISORS OF THE COUNTY OF MARIN
STATE OF CALIFORNIA



County Tax Collector's Statement

I, THE UNDERSIGNED, ON BEHALF OF THE TAX COLLECTOR OF THE COUNTY OF MARIN AND CITIES THEREIN, STATE OF CALIFORNIA, HEREBY STATE THAT THERE ARE NO LIENS FOR UNPAID TAXES, COUNTY OR CITY, OR SPECIAL ASSESSMENTS COLLECTED AS TAXES, EXCEPT TAXES OR SPECIAL ASSESSMENTS NOT YET PAYABLE AGAINST THE TRACT OR SUBDIVISION OF LAND SHOWN HEREON OR ANY PART THEREOF.

SIGNED THIS 4th DAY OF October, 2012.

TAX COLLECTOR
COUNTY OF MARIN AND CITIES THEREIN, STATE OF CALIFORNIA

BY: [Signature]
DEPUTY



Recorder's Statement

FILED THIS 14 DAY OF December, 2012, AT 10:00AM IN BOOK 2012 OF MAPS, AT PAGE 148, AT THE REQUEST OF THE CITY OF NOVATO.

SERIAL NO. 2012-0078500 FEE \$ 14.00

Richard N. Benson
COUNTY RECORDER

A. R. Sabeto
DEPUTY

Certificate of Soils Report

A SOILS REPORT DATED MARCH 29, 2012, WAS PREPARED BY ROCKRIDGE GEOTECHNICAL, PROJECT NO. 12-387, AND IS ON FILE FOR PUBLIC INSPECTION IN THE OFFICES OF THE PLANNING DEPARTMENT OF THE CITY OF NOVATO.

FINAL MAP

LANDS OF

Canyon Green Subdivision

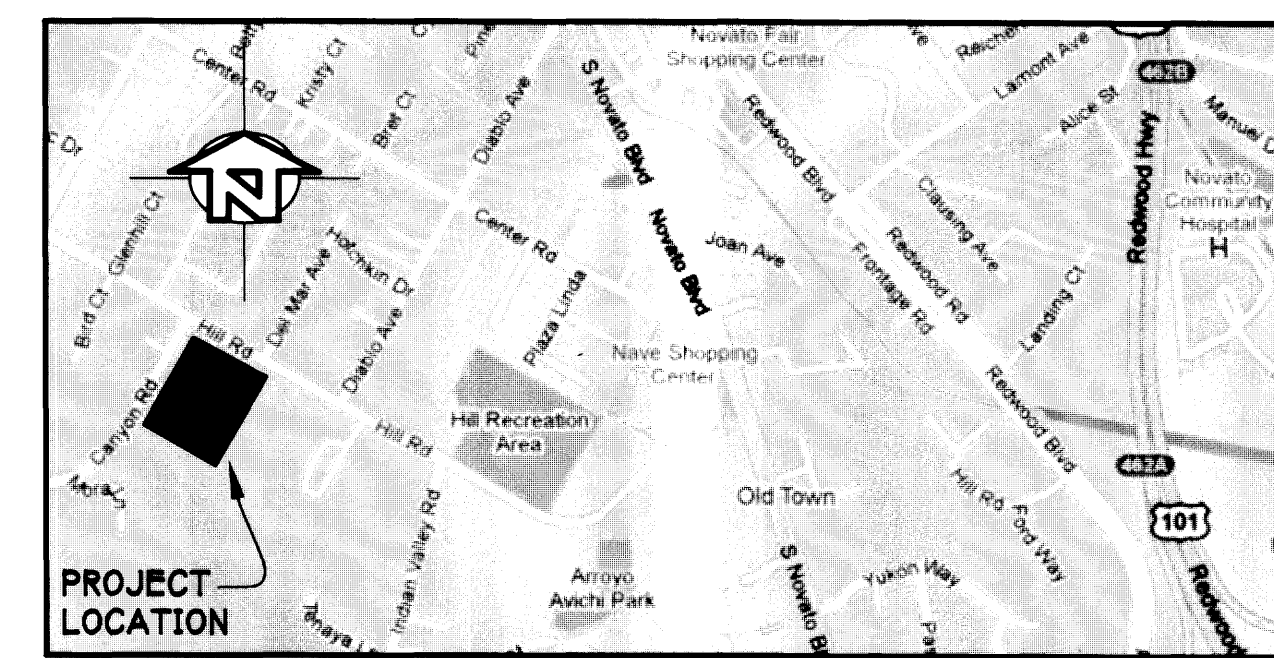
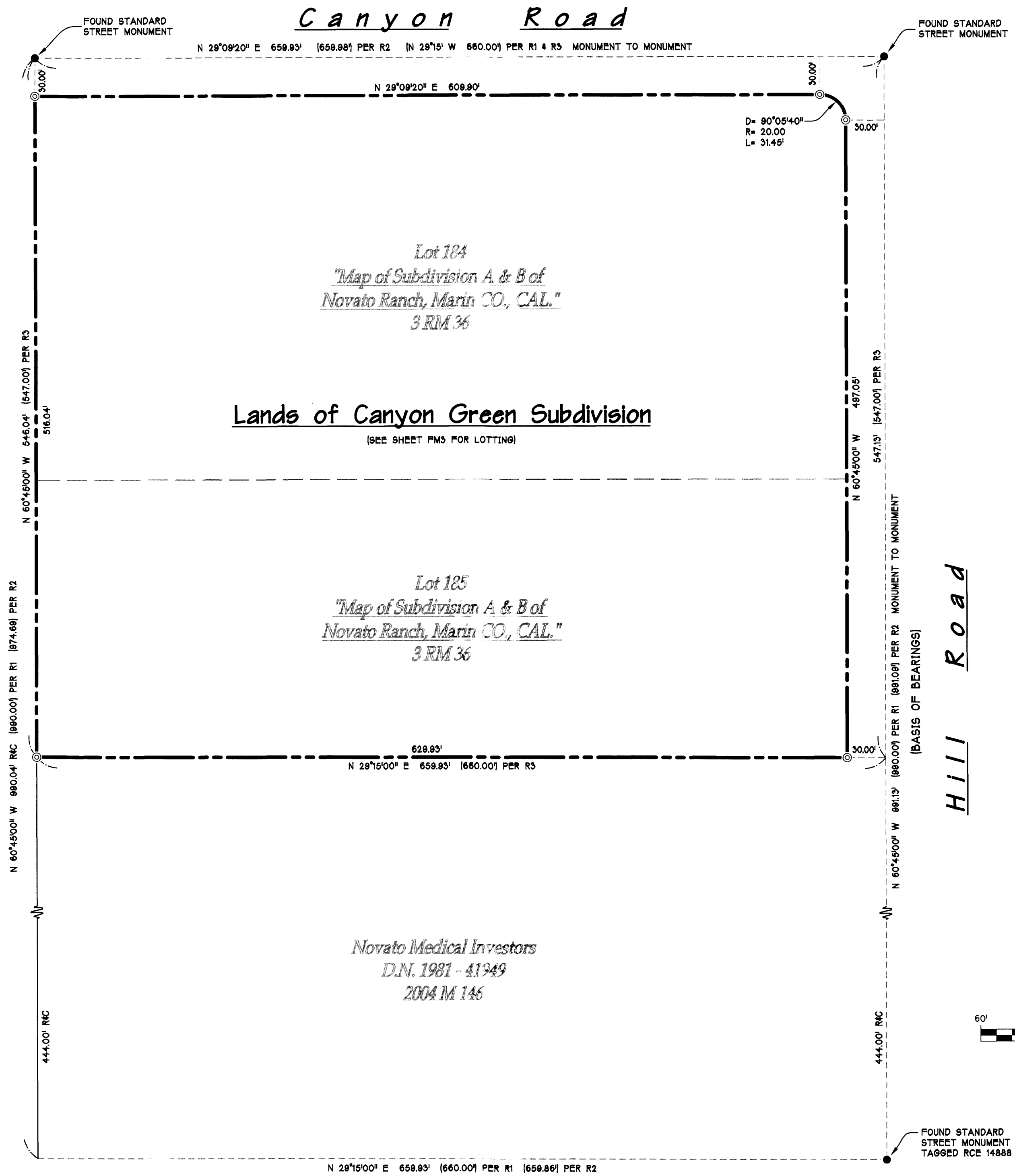
BEING THE LANDS, WITHIN THE CITY OF NOVATO, CONVEYED TO GREEN VALLEY CORPORATION, A CALIFORNIA CORPORATION, BY DEED RECORDED IN DOCUMENT NUMBER 2001-50582 OF THE OFFICIAL RECORDS OF MARIN COUNTY

JUNE, 2012 APN 140-341-14 SCALE: N/A



5200 SOQUEL AVE. SUITE 101
SANTA CRUZ, CA 95062
TEL (831) 426-5313
FAX (831) 426-1743
www.iflandengineers.com

Lot 259
3 RM 42
Deer Park Retirement Res. LTD
D.N. 1988 - 16772
21 O.S. 91



Vicinity Map
(NOT TO SCALE)

Legend

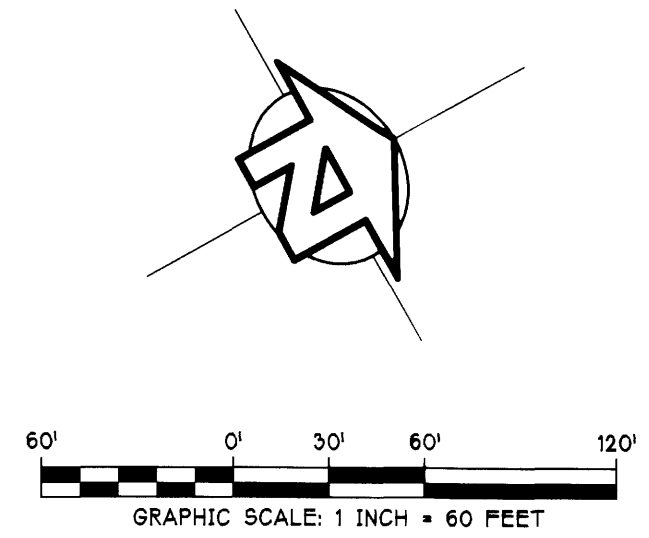
- MONUMENT FOUND AS NOTED
- ⊙ SET 3/4"x30" GALVANIZED IRON PIPE, TAGGED LS 7367, UNLESS OTHERWISE NOTED
- R&C RECORD AND CALCULATED
- () R1 REFERENCE PER 3 RM 36
- () R2 REFERENCE PER 21 O.S. 91
- () R3 REFERENCE PER D.N. 2001-50582
- INDICATES THE BOUNDARIES OF THE LANDS SUBDIVIDED BY THIS MAP
- - - - - INDICATES THE "TIE" LINES BETWEEN FOUND MONUMENTS AND THE SUBJECT PROPERTY

ALL DISTANCES SHOWN ARE IN FEET AND DECIMALS THEREOF
THE TOTAL AREA OF LAND BEING SUBDIVIDED BY THIS MAP IS
7.47 ACRES / 325,312 SQUARE FEET

Basis of Bearings

THE BASIS OF BEARINGS FOR THIS SURVEY IS BETWEEN MONUMENTS FOUND ALONG THE CENTERLINE OF HILL ROAD AS SHOWN ON THAT MAP FILED IN VOLUME 21 OF SURVEYS, AT PAGE 91, MARIN COUNTY RECORDS.

BASIS OF BEARINGS = N 60°45'00" W

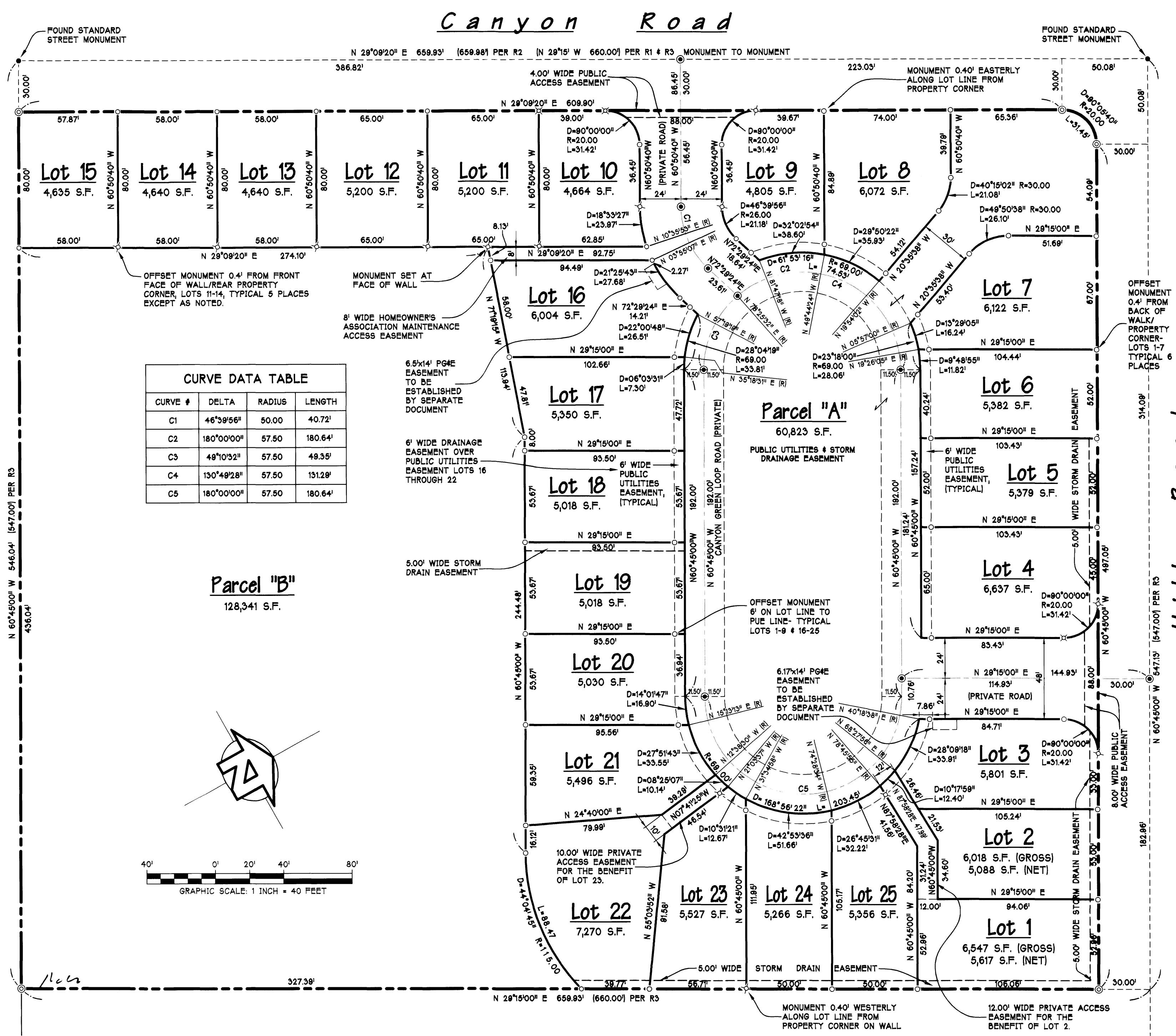


FINAL MAP LANDS OF Canyon Green Subdivision

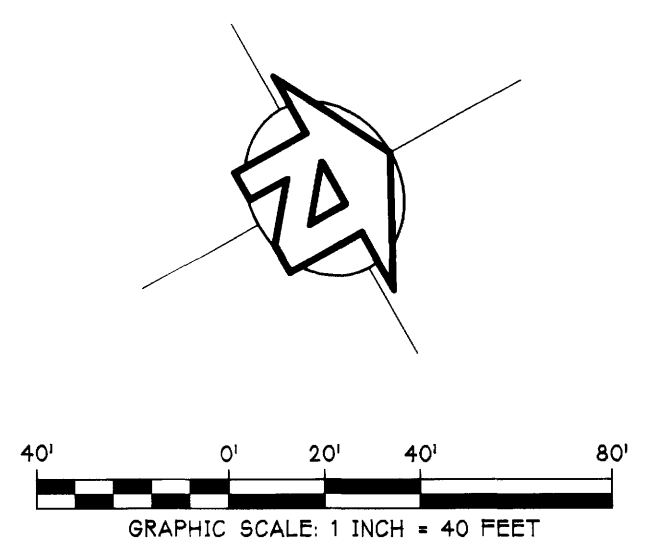
BEING THE LANDS, WITHIN THE CITY OF NOVATO, CONVEYED TO GREEN VALLEY CORPORATION, A CALIFORNIA CORPORATION, BY DEED RECORDED IN DOCUMENT NUMBER 2001-50582 OF THE OFFICIAL RECORDS OF MARIN COUNTY

JUNE, 2012 APN 140-341-14 SCALE: 1" = 60'

IFLAND ENGINEERS
CIVIL ENGINEERING ■ LAND PLANNING ■ STRUCTURAL DESIGN
5200 SOQUEL AVE, SUITE 101
SANTA CRUZ, CA 95062
TEL (831) 424-5313
FAX (831) 424-1743
www.iflandengineers.com



CURVE DATA TABLE			
CURVE #	DELTA	RADIUS	LENGTH
C1	46°39'56"	50.00	40.72'
C2	180°00'00"	57.50	180.64'
C3	49°10'32"	57.50	49.35'
C4	130°49'28"	57.50	131.29'
C5	180°00'00"	57.50	180.64'



- Legend**
- MONUMENT FOUND AS NOTED
 - SET 3/4"x30" GALVANIZED IRON PIPE, TAGGED LS 7367, UNLESS OTHERWISE NOTED
 - SET STANDARD STREET MONUMENT W/ 2-1/4" BRASS DISK TAGGED LS 7367
 - SET 1/2"x24" GALVANIZED IRON PIPE, TAGGED LS 7367, UNLESS OTHERWISE NOTED
 - SET LEAD PLUG AND TAG, TAGGED LS 7367
 - R#C RECORD AND CALCULATED
 - () R1 REFERENCE PER 3 RM 36
 - () R2 REFERENCE PER 21 O.S. 91
 - () R3 REFERENCE PER D.N. 2001-50582
 - INDICATES THE BOUNDARIES OF THE LANDS SUBDIVIDED BY THIS MAP
 - INDICATES THE "TIE" LINES BETWEEN FOUND MONUMENTS AND THE SUBJECT PROPERTY

ALL DISTANCES SHOWN ARE IN FEET AND DECIMALS THEREOF
THE TOTAL AREA OF LAND BEING SUBDIVIDED BY THIS MAP IS 7.47 ACRES / 325,312 SQUARE FEET

Basis of Bearings

THE BASIS OF BEARINGS FOR THIS SURVEY IS BETWEEN MONUMENTS FOUND ALONG THE CENTERLINE OF HILL ROAD AS SHOWN ON THAT MAP FILED IN VOLUME 21 OF SURVEYS, AT PAGE 91, MARIN COUNTY RECORDS.

BASIS OF BEARINGS = N 60°45'00" W

Notes

- OWNERSHIP OF PARCEL A AND PARCEL B IS TO BE VESTED IN THE HOMEOWNER'S ASSOCIATION.
- CC#R'S HAVE BEEN RECORDED CONCURRENTLY WITH THIS MAP.

FINAL MAP
LANDS OF
Canyon Green Subdivision

BEING THE LANDS, WITHIN THE CITY OF NOVATO, CONVEYED TO GREEN VALLEY CORPORATION, A CALIFORNIA CORPORATION, BY DEED RECORDED IN DOCUMENT NUMBER 2001-50582 OF THE OFFICIAL RECORDS OF MARIN COUNTY

JUNE, 2012 APN 140-341-14 SCALE: 1" = 40'

IFLAND ENGINEERS
CIVIL ENGINEERING • LAND PLANNING • STRUCTURAL DESIGN

5200 SOQUEL AVE. SUITE 101
SANTA CRUZ, CA 95062
TEL (831) 426-5313
FAX (831) 426-1763
www.iflandengineers.com

SHEET NO. 3 OF 3 SHEETS JOB NUMBER 10053