

# RECORD OF SURVEY for FIDDLETOWN RANCHETTES, A PARTNERSHIP

308-OR-550

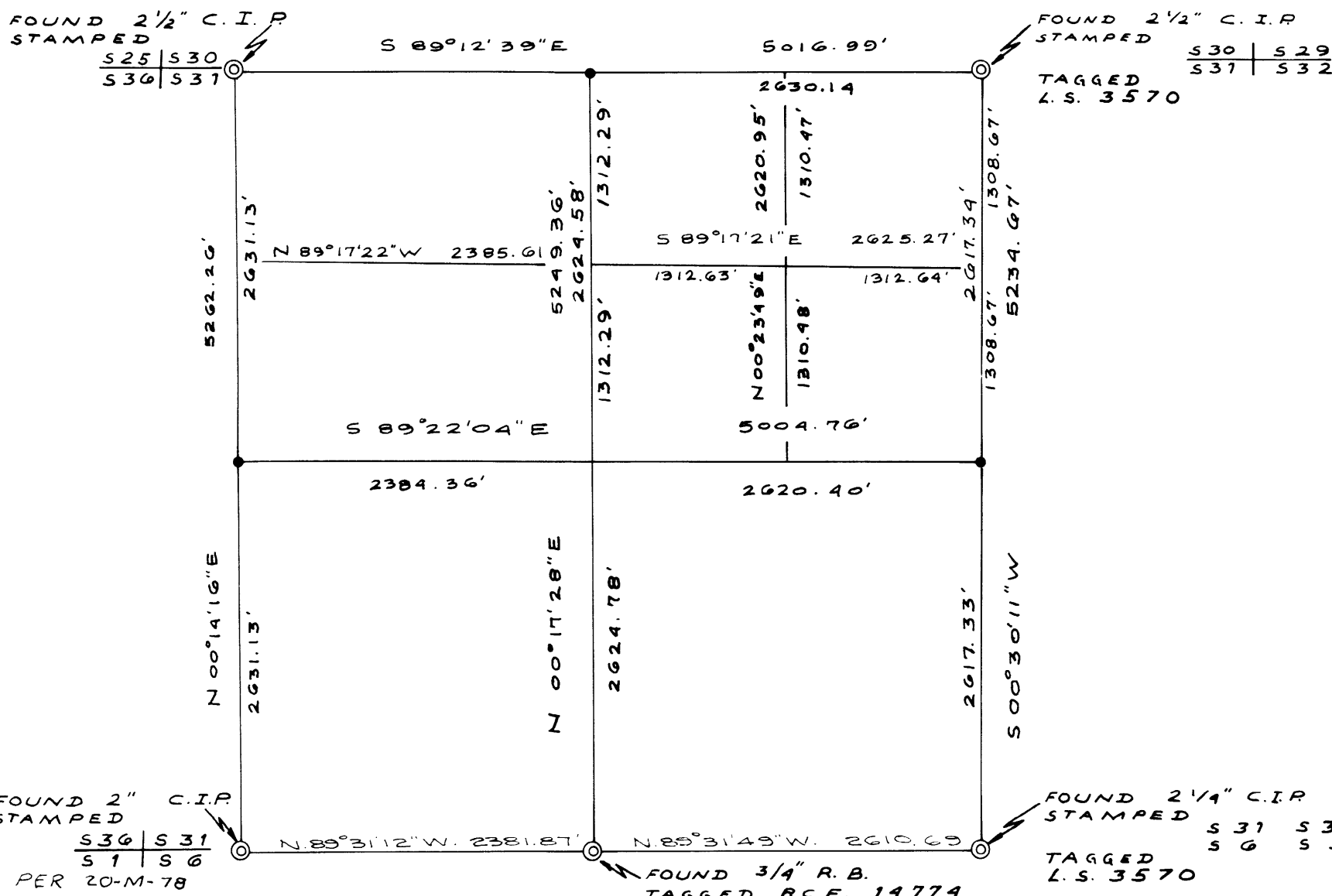
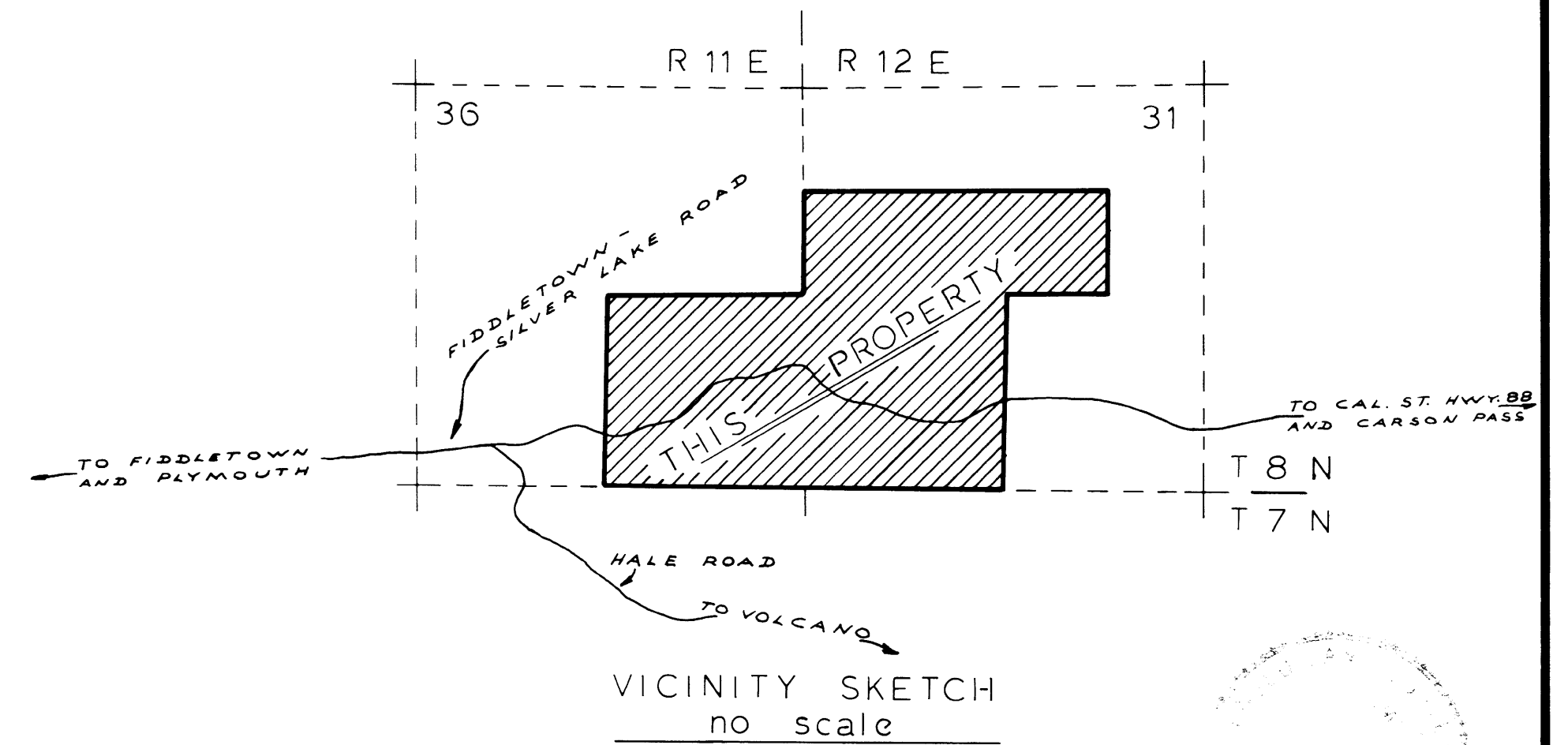
BEING A PORTION OF SECTION 36, T.8 N., R.11 E.  
AND A PORTION OF SECTION 31, T.8 R., R.12 E., M. D. M.  
AMADOR COUNTY, CA.

**TOMA & ANDERSON**

LICENSED LAND SURVEYORS  
41 SUMMIT STREET  
JACKSON, CALIFORNIA

SCALE: 1"=300'

AUGUST, 1978



SECTION 31  
no scale

- DENOTES 1/4 CORNERS SET BY SINGLE PROPORTIONING; UNABLE TO LOCATE ORIGINAL CORNERS.

## SURVEYOR'S CERTIFICATE

THIS MAP CORRECTLY REPRESENTS A SURVEY MADE BY ME OR UNDER MY DIRECTION IN CONFORMANCE WITH THE REQUIREMENTS OF THE LAND SURVEYOR'S ACT AT THE REQUEST OF FIDDLETOWN RANCHETTES IN AUGUST, 1978.

*Ciro L. Toma*  
CIRO L. TOMA L.S. 3570

## COUNTY SURVEYOR'S CERTIFICATE

THIS MAP HAS BEEN EXAMINED FOR CONFORMANCE WITH THE REQUIREMENTS OF THE LAND SURVEYORS ACT. THIS 9<sup>th</sup> DAY OF FEBRUARY, 1979.

*John A. Carstensen*  
JOHN A. CARSTENSEN R.C.E. 22323  
AMADOR COUNTY SURVEYOR

## RECORDER'S CERTIFICATE

FILED THIS 15<sup>th</sup> DAY OF Feb. 1979, AT 11:36 A.M. IN BOOK 31 OF MAPS AND PLATS AT PAGE 15 AT THE REQUEST OF THE AMADOR COUNTY SURVEYOR.  
FEE: \$7.00 paid

*Sheldon D. Johnson*  
AMADOR COUNTY RECORDER

BY *Marilyn A. Oates*  
DEPUTY

## COMPLIANCE CERTIFICATE

THIS MAP HAS BEEN EXAMINED FOR COMPLIANCE WITH THE PROVISIONS OF THE SUBDIVISION MAP ACT AND ALL LOCAL ORDINANCES ENACTED PURSUANT THERETO.  
DATED: 9 FEB 1979

*John A. Carstensen*  
JOHN A. CARSTENSEN R.C.E. 22323  
AMADOR COUNTY SURVEYOR