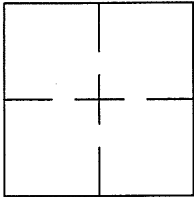


CORNER RECORD

BK 41 Pg. 34

APN No. _____ (Optional) Document Number CR 4259
 City of SAN LORENZO County of ALAMEDA, California
 Brief Legal Description MONUMENT REFERENCE AT BOCKMAN ROAD
725'± WESTERLY OF VIA ARIBIA



CORNER TYPE

Government Corner ☐ Control ☒
 Meander ☐ Property ☐
 Rancho ☐ Other ☐
 Date of Survey JULY 13, 2010

COORDINATES (Optional)

N. _____
 E. _____
 Zone _____ Datum _____
 Elev. _____

Corner - Left as found ☒ Found and tagged ☐ Established ☐ Reestablished ☐ Rebuilt ☐

In compliance with Section 8771 of the Professional Land Surveyors' Act, this corner record is being filed to
 ESTABLISH X / REESTABLISH _____ the position of an existing monument PRIOR X / SUBSEQUENT _____
 to street or highway reconstruction. (Use this portion only when applicable.)

Identification and type of corner found: Evidence used to identify or procedure used to establish or reestablish the corner:
VERIFIED EXISTING COUNTY MONUMENT HJ27T2 PRIOR TO AN UPCOMING PAVEMENT
REHABILITATION PROJECT

A description of the physical condition of the monument as found and as set or reset: _____
SET CUT CROSS ON BACK OF WALK

SURVEYOR'S STATEMENT

This Corner Record was prepared by me or under my direction in conformance with
 the Land Surveyors' Act on SEPTEMBER 28 2011

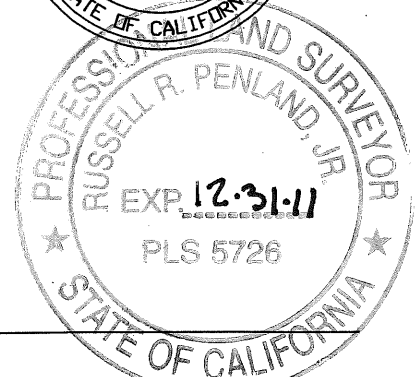
Signed [Signature] L.S. Number 6868

COUNTY SURVEYOR'S STATEMENT

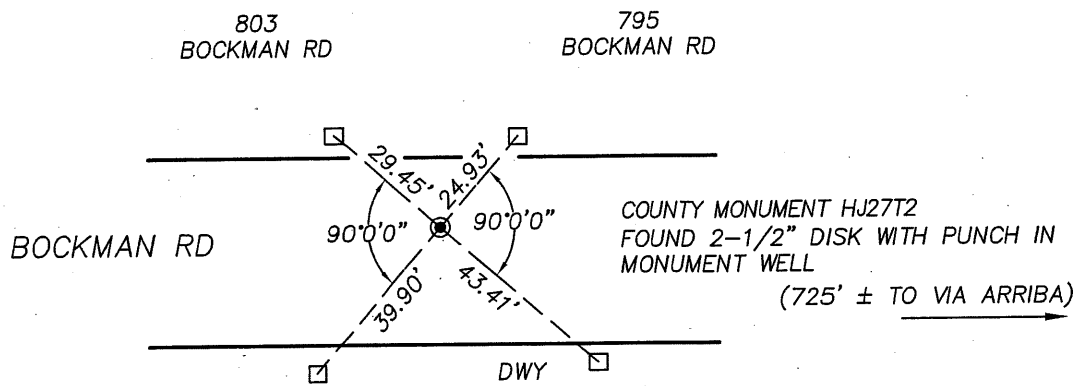
This Corner Record was received 8-10 - 20 10 and examined
 and filed 10-2 2011.

Signed [Signature] Title: County Surveyor

County Surveyor's Comment _____



HJ27T2



- - SET CUT CROSS AT BACK OF WALK
- - FOUND STANDARD COUNTY MONUMENT
- DWY - DRIVEWAY